

## Product datasheet

# Anti-MR1 antibody ab229715

[2 Images](#)

### Overview

---

<b>Product name</b>	Anti-MR1 antibody
<b>Description</b>	Rabbit polyclonal to MR1
<b>Host species</b>	Rabbit
<b>Tested applications</b>	<b>Suitable for:</b> IHC-P
<b>Species reactivity</b>	<b>Reacts with:</b> Human
<b>Immunogen</b>	Recombinant fragment corresponding to Human MR1 aa 20-260. Database link: <a href="#">Q95460</a>
<b>Positive control</b>	IHC-P: Human prostate cancer and endometrial cancer tissues.
<b>General notes</b>	<p>The Life Science industry has been in the grips of a reproducibility crisis for a number of years. Abcam is leading the way in addressing this with our range of recombinant monoclonal antibodies and knockout edited cell lines for gold-standard validation. Please check that this product meets your needs before purchasing.</p> <p>If you have any questions, special requirements or concerns, please send us an inquiry and/or contact our Support team ahead of purchase. Recommended alternatives for this product can be found below, along with publications, customer reviews and Q&amp;As</p>

### Properties

---

<b>Form</b>	Liquid
<b>Storage instructions</b>	Shipped at 4°C. Store at +4°C short term (1-2 weeks). Upon delivery aliquot. Store at -20°C long term. Avoid freeze / thaw cycle.
<b>Storage buffer</b>	pH: 7.30 Preservative: 0.02% Sodium azide Constituents: PBS, 50% Glycerol (glycerin, glycerine)
<b>Purity</b>	Immunogen affinity purified
<b>Clonality</b>	Polyclonal
<b>Isotype</b>	IgG

### Applications

---

## The Abpromise guarantee

Our **Abpromise guarantee** covers the use of ab229715 in the following tested applications.

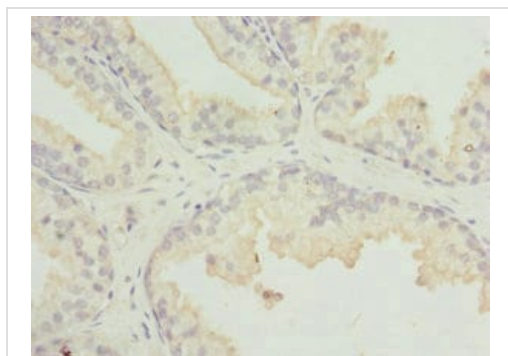
The application notes include recommended starting dilutions; optimal dilutions/concentrations should be determined by the end user.

Application	Abreviews	Notes
IHC-P		1/20 - 1/200.

## Target

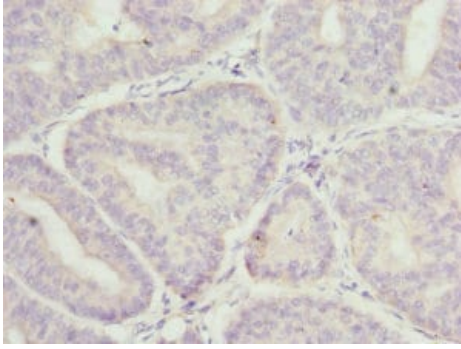
<b>Function</b>	Antigen-presenting molecule specialized in presenting microbial vitamin B metabolites. Involved in the development and expansion of a small population of T-cells expressing an invariant T-cell receptor alpha chain called mucosal-associated invariant T-cells (MAIT). MAIT lymphocytes are preferentially located in the gut lamina propria and therefore may be involved in monitoring commensal flora or serve as a distress signal. Expression and MAIT cell recognition seem to be ligand-dependent.
<b>Tissue specificity</b>	Ubiquitous.
<b>Sequence similarities</b>	Belongs to the MHC class I family. Contains 1 Ig-like C1-type (immunoglobulin-like) domain.
<b>Domain</b>	The alpha-3 region and to a lesser extent the transmembrane and cytosolic domains regulate surface expression. The alpha-3 region mediates interaction with B2M (PubMed:23051753). The ligand-binding groove is ideally suited to present small organic compounds that can originate from vitamins rather than antigenic peptides.
<b>Post-translational modifications</b>	N-glycosylated.
<b>Cellular localization</b>	Secreted; Cell membrane. Endoplasmic reticulum and Cell membrane. Endoplasmic reticulum membrane. The larger proportion remains in the ER in an immature state. The subset that reach cell surface does it through a B2M-independent pathway.

## Images



Paraffin-embedded human prostate cancer tissue stained for MR1 using ab229715 at 1/100 dilution in immunohistochemical analysis.

Immunohistochemistry (Formalin/PFA-fixed paraffin-embedded sections) - Anti-MR1 antibody (ab229715)



Paraffin-embedded human endometrial cancer tissue stained for MR1 using ab229715 at 1/100 dilution in immunohistochemical analysis.

Immunohistochemistry (Formalin/PFA-fixed paraffin-embedded sections) - Anti-MR1 antibody (ab229715)

**Please note:** All products are "FOR RESEARCH USE ONLY. NOT FOR USE IN DIAGNOSTIC PROCEDURES"

### **Our Abpromise to you: Quality guaranteed and expert technical support**

---

- Replacement or refund for products not performing as stated on the datasheet
- Valid for 12 months from date of delivery
- Response to your inquiry within 24 hours
- We provide support in Chinese, English, French, German, Japanese and Spanish
- Extensive multi-media technical resources to help you
- We investigate all quality concerns to ensure our products perform to the highest standards

If the product does not perform as described on this datasheet, we will offer a refund or replacement. For full details of the Abpromise, please visit <https://www.abcam.com/abpromise> or contact our technical team.

### **Terms and conditions**

---

- Guarantee only valid for products bought direct from Abcam or one of our authorized distributors