

Product datasheet

Anti-MRC2/ENDO180 antibody [EPR13215] ab181075

Recombinant RabMAb

3 Images

Overview

Product name	Anti-MRC2/ENDO180 antibody [EPR13215]
Description	Rabbit monoclonal [EPR13215] to MRC2/ENDO180
Host species	Rabbit
Tested applications	Suitable for: WB
Species reactivity	Reacts with: Human
Immunogen	Synthetic peptide. This information is proprietary to Abcam and/or its suppliers.
Positive control	Human fetal lung and kidney lysates; Saos 2 cell lysate.
General notes	<p>This product is a recombinant monoclonal antibody, which offers several advantages including:</p> <ul style="list-style-type: none"> - High batch-to-batch consistency and reproducibility - Improved sensitivity and specificity - Long-term security of supply - Animal-free production <p>For more information see here.</p> <p>Our RabMAb® technology is a patented hybridoma-based technology for making rabbit monoclonal antibodies. For details on our patents, please refer to RabMAb® patents.</p>

Properties

Form	Liquid
Storage instructions	Shipped at 4°C. Store at +4°C short term (1-2 weeks). Upon delivery aliquot. Store at -20°C long term. Avoid freeze / thaw cycle.
Storage buffer	<p>Preservative: 0.01% Sodium azide</p> <p>Constituents: 59% PBS, 40% Glycerol (glycerin, glycerine), 0.05% BSA</p>
Purity	Tissue culture supernatant
Clonality	Monoclonal
Clone number	EPR13215
Isotype	IgG

Applications

Applications

The Abpromise guarantee

Our **Abpromise guarantee** covers the use of ab181075 in the following tested applications.

The application notes include recommended starting dilutions; optimal dilutions/concentrations should be determined by the end user.

Application	Abreviews	Notes
WB		1/1000 - 1/10000. Detects a band of approximately 180 kDa (predicted molecular weight: 167 kDa).

Target

Function

May play a role as endocytotic lectin receptor displaying calcium-dependent lectin activity. Internalizes glycosylated ligands from the extracellular space for release in an endosomal compartment via clathrin-mediated endocytosis. May be involved in plasminogen activation system controlling the extracellular level of PLAU/PLAUR, and thus may regulate protease activity at the cell surface. May contribute to cellular uptake, remodeling and degradation of extracellular collagen matrices. May play a role during cancer progression as well as in other chronic tissue destructive diseases acting on collagen turnover. May participate in remodeling of extracellular matrix co-operating with the matrix metalloproteinases (MMPs).

Tissue specificity

Ubiquitous with low expression in brain, placenta, lung, kidney, pancreas, spleen, thymus and colon. Expressed in endothelial cells, fibroblasts and macrophages. Highly expressed in fetal lung and kidney.

Sequence similarities

Contains 8 C-type lectin domains.
Contains 1 fibronectin type-II domain.
Contains 1 ricin B-type lectin domain.

Domain

C-type lectin domains 3 to 8 are not required for calcium-dependent binding of mannose, fucose and N-acetylglucosamine. C-type lectin domain 2 is responsible for sugar-binding in a calcium-dependent manner.
Fibronectin type-II domain mediates collagen-binding.
Ricin B-type lectin domain contacts with the second C-type lectin domain.

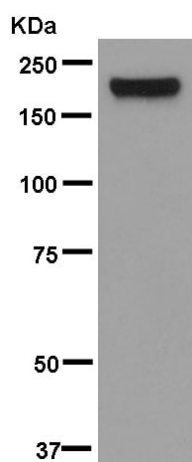
Post-translational modifications

N-glycosylated.

Cellular localization

Membrane.

Images



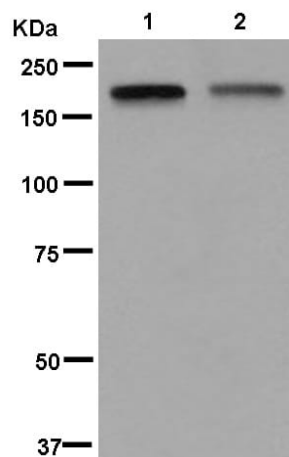
Western blot - Anti-MRC2/ENDO180 antibody [EPR13215] (ab181075)

Anti-MRC2/ENDO180 antibody [EPR13215] (ab181075) at 1/5000 dilution + Saos-2 (human osteosarcoma cell line) cell lysate at 20 µg

Secondary

Goat Anti-Rabbit IgG H&L (HRP) ([ab136636](#)) at 1/500 dilution

Predicted band size: 167 kDa



Western blot - Anti-MRC2/ENDO180 antibody [EPR13215] (ab181075)

All lanes : Anti-MRC2/ENDO180 antibody [EPR13215] (ab181075) at 1/1000 dilution

Lane 1 : Human fetal kidney lysate

Lane 2 : Human fetal lung lysate

Lysates/proteins at 20 µg per lane.

Secondary

All lanes : Goat Anti-Rabbit IgG H&L (HRP) ([ab136636](#)) at 1/500 dilution (Goat Anti-Rabbit IgG HRP)

Predicted band size: 167 kDa

Why choose a recombinant antibody?



Research with confidence
Consistent and reproducible results



Long-term and scalable supply
Recombinant technology



Success from the first experiment
Confirmed specificity



Ethical standards compliant
Animal-free production

Anti-MRC2/ENDO180 antibody [EPR13215]
(ab181075)

Please note: All products are "FOR RESEARCH USE ONLY. NOT FOR USE IN DIAGNOSTIC PROCEDURES"

Our Abpromise to you: Quality guaranteed and expert technical support

- Replacement or refund for products not performing as stated on the datasheet
- Valid for 12 months from date of delivery
- Response to your inquiry within 24 hours
- We provide support in Chinese, English, French, German, Japanese and Spanish
- Extensive multi-media technical resources to help you
- We investigate all quality concerns to ensure our products perform to the highest standards

If the product does not perform as described on this datasheet, we will offer a refund or replacement. For full details of the Abpromise, please visit <https://www.abcam.com/abpromise> or contact our technical team.

Terms and conditions

- Guarantee only valid for products bought direct from Abcam or one of our authorized distributors