




## Product datasheet

# Anti-MRF antibody ab213681

★☆☆☆☆ [2 Abreviews](#) [2 References](#) [2 Images](#)

### Overview

---

<b>Product name</b>	Anti-MRF antibody
<b>Description</b>	Rabbit polyclonal to MRF
<b>Host species</b>	Rabbit
<b>Tested applications</b>	<b>Suitable for:</b> WB, IHC-P
<b>Species reactivity</b>	<b>Reacts with:</b> Mouse, Rat <b>Predicted to work with:</b> Human 
<b>Immunogen</b>	Synthetic peptide within Human MRF aa 450-550 conjugated to keyhole limpet haemocyanin. The exact immunogen sequence used to generate this antibody is proprietary information. If additional detail on the immunogen is needed to determine the suitability of the antibody for your needs, please <b>contact</b> our Scientific Support team to discuss your requirements. Database link: <a href="#">Q9Y2G1</a>  <a href="#">Run BLAST with</a>  <a href="#">Run BLAST with</a>
<b>Positive control</b>	Rat brain tissue; mouse brain lysate.
<b>General notes</b>	<p>The Life Science industry has been in the grips of a reproducibility crisis for a number of years. Abcam is leading the way in addressing this with our range of recombinant monoclonal antibodies and knockout edited cell lines for gold-standard validation. Please check that this product meets your needs before purchasing.</p> <p>If you have any questions, special requirements or concerns, please send us an inquiry and/or contact our Support team ahead of purchase. Recommended alternatives for this product can be found below, along with publications, customer reviews and Q&amp;As</p>

### Properties

---

<b>Form</b>	Liquid
<b>Storage instructions</b>	Shipped at 4°C. Store at +4°C short term (1-2 weeks). Upon delivery aliquot. Store at -20°C long term. Avoid freeze / thaw cycle.
<b>Storage buffer</b>	pH: 7.40 Preservative: 0.02% Proclin 300 Constituents: 50% Glycerol (glycerin, glycerine), 1% BSA, 48.98% TBS, 1X
<b>Purity</b>	Protein A purified
<b>Clonality</b>	Polyclonal

Isotype

IgG

## Applications

---

**The Abpromise guarantee** Our **Abpromise guarantee** covers the use of ab213681 in the following tested applications. The application notes include recommended starting dilutions; optimal dilutions/concentrations should be determined by the end user.

Application	Abreviews	Notes
WB		1/100 - 1/1000. Detects a band of approximately 124 kDa (predicted molecular weight: 124 kDa).
IHC-P		1/100 - 1/500. Perform heat mediated antigen retrieval with citrate buffer pH 6 before commencing with IHC staining protocol.

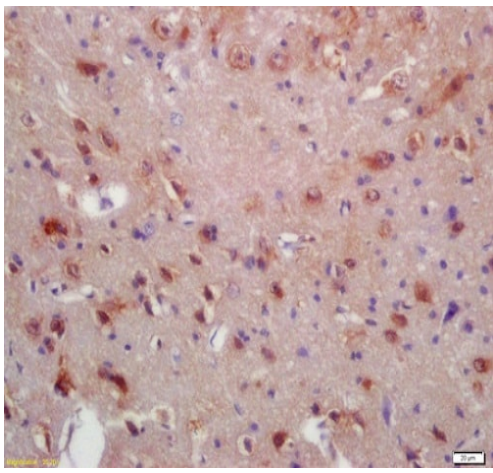
## Target

---

<b>Function</b>	Transcription regulator required for expression of central nervous system (CNS) myelin genes such as MBP and MOG, thereby playing a central role in oligodendrocyte maturation and CNS myelination. Probably acts as a transcription factor that directly binds DNA and activates expression of CNS myelin genes.
<b>Tissue specificity</b>	Expressed in lung, ARPE-19 cell line, brainstem, uterus and, to a lesser extent, in basal ganglion and liver. Weakly expressed in cerebellum and retina.
<b>Sequence similarities</b>	Belongs to the MRF family. Contains 1 NDT80 DNA-binding domain.
<b>Domain</b>	A transmembrane region is predicted by sequence analysis tools. However, the protein is nuclear and probably acts as a transcription factor. It is therefore unclear whether the predicted transmembrane region is a hydrophobic region that does not insert into membranes or whether it is a real transmembrane region that may be cleaved when acting as transcription regulator.
<b>Cellular localization</b>	Membrane. Nucleus.

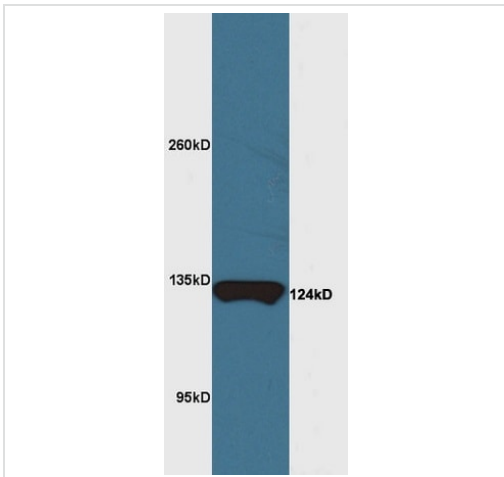
## Images

---



Immunohistochemistry (Formalin/PFA-fixed paraffin-embedded sections) - Anti-MRF antibody (ab213681)

Immunohistochemical analysis of formalin-fixed, paraffin-embedded rat brain tissue labeling MRF with ab213681 at 1/200 dilution, followed by conjugation to the secondary antibody and DAB staining.



Western blot - Anti-MRF antibody (ab213681)

Anti-MRF antibody (ab213681) at 1/200 dilution + mouse brain lysate

#### Secondary

Goat Anti-Rabbit IgG Antibody (H+L), HRP Conjugated at 1/3000 dilution

**Predicted band size:** 124 kDa

6% gel

**Please note:** All products are "FOR RESEARCH USE ONLY. NOT FOR USE IN DIAGNOSTIC PROCEDURES"

#### Our Abpromise to you: Quality guaranteed and expert technical support

- Replacement or refund for products not performing as stated on the datasheet
- Valid for 12 months from date of delivery
- Response to your inquiry within 24 hours
- We provide support in Chinese, English, French, German, Japanese and Spanish
- Extensive multi-media technical resources to help you
- We investigate all quality concerns to ensure our products perform to the highest standards

If the product does not perform as described on this datasheet, we will offer a refund or replacement. For full details of the Abpromise, please visit <https://www.abcam.com/abpromise> or contact our technical team.

## Terms and conditions

---

- Guarantee only valid for products bought direct from Abcam or one of our authorized distributors