

Product datasheet

Anti-MRPS15 antibody ab242120

[2 Images](#)

Overview

Product name	Anti-MRPS15 antibody
Description	Rabbit polyclonal to MRPS15
Host species	Rabbit
Tested applications	Suitable for: WB, IP
Species reactivity	Reacts with: Human
Immunogen	Synthetic peptide within Human MRPS15 aa 207-257. The exact sequence is proprietary. Database link: P82914
Positive control	WB: HeLa, HEK-293T and Jurkat whole cell lysate. IP: MRPS15 IP in HEK-293T whole cell lysate.
General notes	<p>The Life Science industry has been in the grips of a reproducibility crisis for a number of years. Abcam is leading the way in addressing this with our range of recombinant monoclonal antibodies and knockout edited cell lines for gold-standard validation. Please check that this product meets your needs before purchasing.</p> <p>If you have any questions, special requirements or concerns, please send us an inquiry and/or contact our Support team ahead of purchase. Recommended alternatives for this product can be found below, along with publications, customer reviews and Q&As</p>

Properties

Form	Liquid
Storage instructions	Shipped at 4°C. Store at +4°C short term (1-2 weeks). Upon delivery aliquot. Store at -20°C long term. Avoid freeze / thaw cycle.
Storage buffer	pH: 7 Preservative: 0.09% Sodium azide Constituent: Tris citrate/phosphate
Purity	pH 7 to 8 Immunogen affinity purified
Purification notes	Antibody was affinity purified using an epitope specific to MRPS15 immobilized on solid support.
Clonality	Polyclonal
Isotype	IgG

Applications

The Abpromise guarantee

Our **Abpromise guarantee** covers the use of ab242120 in the following tested applications.

The application notes include recommended starting dilutions; optimal dilutions/concentrations should be determined by the end user.

Application	Abreviews	Notes
WB		1/10000 - 1/25000.
IP		Use at 2-10 µg/mg of lysate.

Target

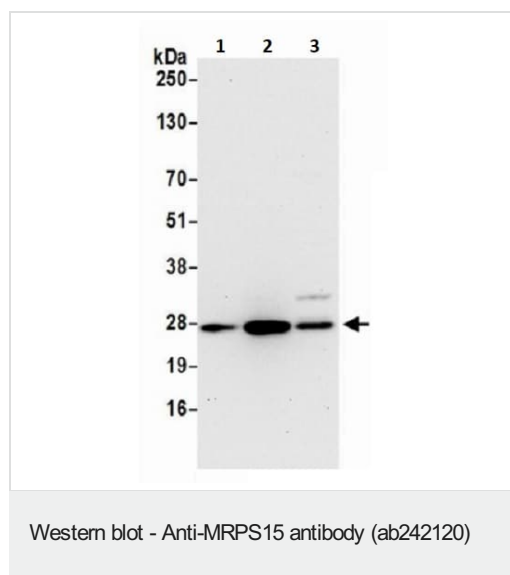
Sequence similarities

Belongs to the ribosomal protein S15P family.

Cellular localization

Mitochondrion.

Images



All lanes : Anti-MRPS15 antibody (ab242120) at 0.04 µg/ml

Lane 1 : HeLa (Human epithelial cell line from cervix adenocarcinoma) whole cell lysate

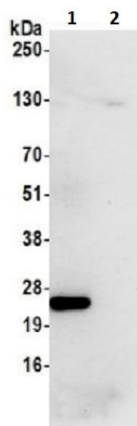
Lane 2 : HEK-293T (Human epithelial cell line from embryonic kidney transformed with large T antigen) whole cell lysate

Lane 3 : Jurkat (Human T cell leukemia cell line from peripheral blood) whole cell lysate

Lysates/proteins at 50 µg per lane.

Exposure time: 30 seconds

Prepared using NETN lysis buffer.



Immunoprecipitation - Anti-MRPS15 antibody
(ab242120)

MRPS15 was immunoprecipitated from HEK-293T (Human epithelial cell line from embryonic kidney transformed with large T antigen) whole cell lysate (1 mg per IP reaction; 20% of IP loaded) prepared using NETN lysis buffer.

ab242120 used for IP at 6 μ g per reaction. For WB 0.4 μ g/ml.

Lane 1: ab242120 IP in HEK-293T whole cell lysate.

Lane 2: Control IgG.

Chemiluminescence detection: 30 seconds.

Please note: All products are "FOR RESEARCH USE ONLY. NOT FOR USE IN DIAGNOSTIC PROCEDURES"

Our Abpromise to you: Quality guaranteed and expert technical support

- Replacement or refund for products not performing as stated on the datasheet
- Valid for 12 months from date of delivery
- Response to your inquiry within 24 hours
- We provide support in Chinese, English, French, German, Japanese and Spanish
- Extensive multi-media technical resources to help you
- We investigate all quality concerns to ensure our products perform to the highest standards

If the product does not perform as described on this datasheet, we will offer a refund or replacement. For full details of the Abpromise, please visit <https://www.abcam.com/abpromise> or contact our technical team.

Terms and conditions

- Guarantee only valid for products bought direct from Abcam or one of our authorized distributors