

Product datasheet

Anti-MRPS15 antibody [EPR9361] ab137070

Recombinant RabMAb

[4 References](#) [5 Images](#)

Overview

Product name	Anti-MRPS15 antibody [EPR9361]
Description	Rabbit monoclonal [EPR9361] to MRPS15
Host species	Rabbit
Tested applications	Suitable for: IHC-P, ICC/IF, WB Unsuitable for: Flow Cyt or IP
Species reactivity	Reacts with: Human
Immunogen	Synthetic peptide within Human MRPS15 aa 200-300 (C terminal). The exact sequence is proprietary.
Positive control	U-87 MG, Raji and HeLa cell lysates; Human breast carcinoma tissue; HeLa and U-87 MG cells.
General notes	<p>This product is a recombinant monoclonal antibody, which offers several advantages including:</p> <ul style="list-style-type: none"> - High batch-to-batch consistency and reproducibility - Improved sensitivity and specificity - Long-term security of supply - Animal-free production <p>For more information see here.</p> <p>Our RabMAb[®] technology is a patented hybridoma-based technology for making rabbit monoclonal antibodies. For details on our patents, please refer to RabMAb[®] patents.</p> <p>Mouse, Rat: We have preliminary internal testing data to indicate this antibody may not react with these species. Please contact us for more information.</p>

Properties

Form	Liquid
Storage instructions	Shipped at 4°C. Store at +4°C short term (1-2 weeks). Upon delivery aliquot. Store at -20°C long term. Avoid freeze / thaw cycle.
Storage buffer	pH: 7.2 Preservative: 0.01% Sodium azide Constituents: 9% PBS, 40% Glycerol (glycerin, glycerine), 0.05% BSA, 50% Tissue culture supernatant
Purity	Protein A purified

Clonality	Monoclonal
Clone number	EPR9361
Isotype	IgG

Applications

The Abpromise guarantee Our **Abpromise guarantee** covers the use of ab137070 in the following tested applications.

The application notes include recommended starting dilutions; optimal dilutions/concentrations should be determined by the end user.

Application	Abreviews	Notes
IHC-P		1/100 - 1/250. Perform heat mediated antigen retrieval with citrate buffer pH 6 before commencing with IHC staining protocol.
ICC/IF		1/250 - 1/500.
WB		1/1000 - 1/10000. Predicted molecular weight: 30 kDa.

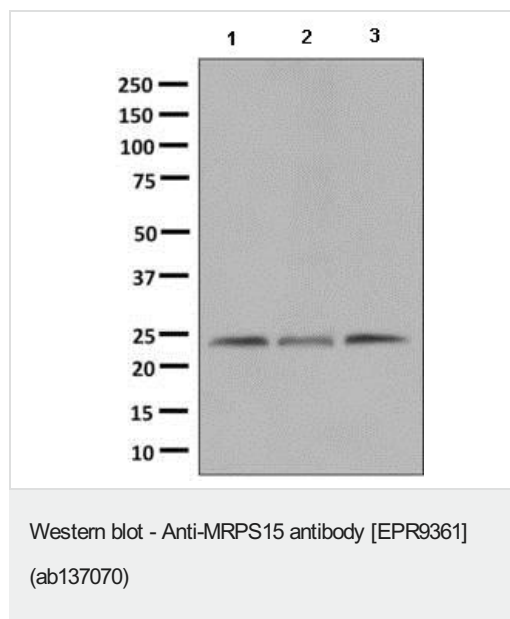
Application notes Is unsuitable for Flow Cyt or IP.

Target

Sequence similarities Belongs to the ribosomal protein S15P family.

Cellular localization Mitochondrion.

Images



All lanes : Anti-MRPS15 antibody [EPR9361] (ab137070) at 1/1000 dilution

Lane 1 : U-87 MG cell lysate

Lane 2 : Raji cell lysate

Lane 3 : HeLa cell lysate

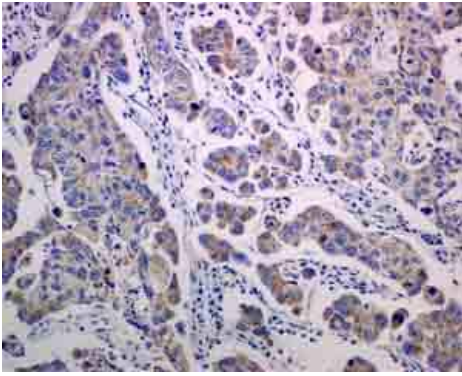
Lysates/proteins at 10 µg per lane.

Secondary

All lanes : Goat anti-rabbit HRP conjugated at 1/2000 dilution

Developed using the ECL technique.

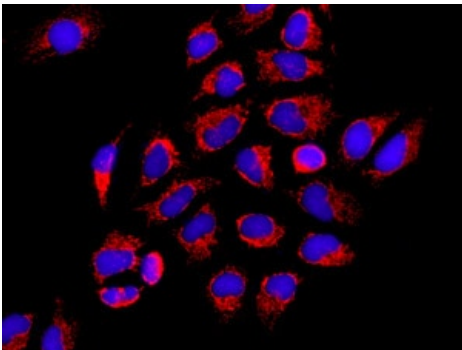
Predicted band size: 30 kDa



Immunohistochemical analysis of paraffin-embedded Human breast carcinoma tissue labelling MRPS15 with ab137070 at 1/100 dilution.

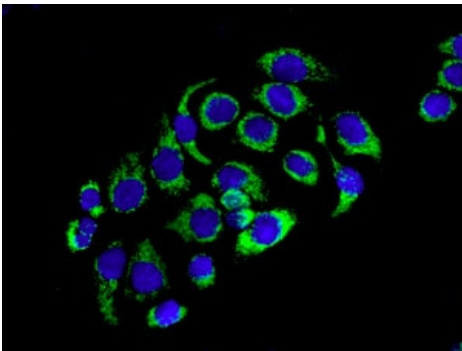
Perform heat mediated antigen retrieval with citrate buffer pH 6 before commencing with IHC staining protocol.

Immunohistochemistry (Formalin/PFA-fixed paraffin-embedded sections) - Anti-MRPS15 antibody [EPR9361] (ab137070)



Immunofluorescent analysis of HeLa cells labelling MRPS15 with ab137070 at 1/250 dilution.

Immunocytochemistry/ Immunofluorescence - Anti-MRPS15 antibody [EPR9361] (ab137070)



Immunofluorescent analysis of U-87 MG cells labelling MRPS15 with ab137070 at 1/250 dilution.

Immunocytochemistry/ Immunofluorescence - Anti-MRPS15 antibody [EPR9361] (ab137070)

Why choose a recombinant antibody?



Research with confidence
Consistent and reproducible results



Long-term and scalable supply
Recombinant technology



Success from the first experiment
Confirmed specificity



Ethical standards compliant
Animal-free production

Anti-MRPS15 antibody [EPR9361] (ab137070)

Please note: All products are "FOR RESEARCH USE ONLY. NOT FOR USE IN DIAGNOSTIC PROCEDURES"

Our Abpromise to you: Quality guaranteed and expert technical support

- Replacement or refund for products not performing as stated on the datasheet
- Valid for 12 months from date of delivery
- Response to your inquiry within 24 hours
- We provide support in Chinese, English, French, German, Japanese and Spanish
- Extensive multi-media technical resources to help you
- We investigate all quality concerns to ensure our products perform to the highest standards

If the product does not perform as described on this datasheet, we will offer a refund or replacement. For full details of the Abpromise, please visit <https://www.abcam.com/abpromise> or contact our technical team.

Terms and conditions

- Guarantee only valid for products bought direct from Abcam or one of our authorized distributors