

### Anti-MRPS30 antibody - C-terminal ab196940

2 Images

#### Overview

<b>Product name</b>	Anti-MRPS30 antibody - C-terminal
<b>Description</b>	Rabbit polyclonal to MRPS30 - C-terminal
<b>Host species</b>	Rabbit
<b>Tested applications</b>	<b>Suitable for:</b> WB, ICC/IF
<b>Species reactivity</b>	<b>Reacts with:</b> Human
<b>Immunogen</b>	Recombinant fragment corresponding to Human MRPS30 (C terminal). Database link: <a href="#">Q9NP92</a>
<b>Positive control</b>	SW620, HL60, HeLa and HepG2 cell extracts; HeLa cells.
<b>General notes</b>	<p>The Life Science industry has been in the grips of a reproducibility crisis for a number of years. Abcam is leading the way in addressing this with our range of recombinant monoclonal antibodies and knockout edited cell lines for gold-standard validation. Please check that this product meets your needs before purchasing.</p> <p>If you have any questions, special requirements or concerns, please send us an inquiry and/or contact our Support team ahead of purchase. Recommended alternatives for this product can be found below, along with publications, customer reviews and Q&amp;As</p>

#### Properties

<b>Form</b>	Liquid
<b>Storage instructions</b>	Shipped at 4°C. Store at +4°C short term (1-2 weeks). Upon delivery aliquot. Store at -20°C long term. Avoid freeze / thaw cycle.
<b>Storage buffer</b>	<p>pH: 7.40</p> <p>Preservative: 0.02% Sodium azide</p> <p>Constituents: 49% PBS, 50% Glycerol (glycerin, glycerine), 0.87% Sodium chloride</p> <p>PBS without Mg<sup>2+</sup> and Ca<sup>2+</sup>.</p>
<b>Purity</b>	Immunogen affinity purified
<b>Clonality</b>	Polyclonal
<b>Isotype</b>	IgG

## Applications

### The Abpromise guarantee

Our **Abpromise guarantee** covers the use of ab196940 in the following tested applications.

The application notes include recommended starting dilutions; optimal dilutions/concentrations should be determined by the end user.

Application	Abreviews	Notes
WB		1/500 - 1/2000. Predicted molecular weight: 50 kDa.
ICC/IF		1/50 - 1/200.

## Target

### Tissue specificity

Heart, skeletal muscle, kidney and liver. Lower expression in placenta and peripheral blood leukocytes.

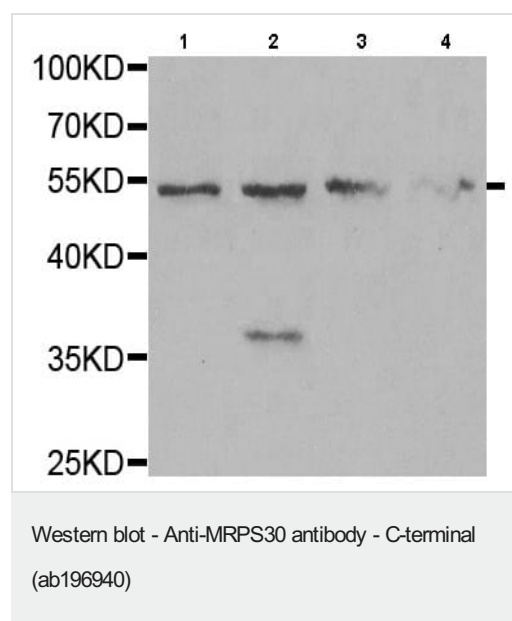
### Sequence similarities

Belongs to the ribosomal protein S30/L37 family.

### Cellular localization

Mitochondrion.

## Images



**All lanes :** Anti-MRPS30 antibody - C-terminal (ab196940) at 1/500 dilution

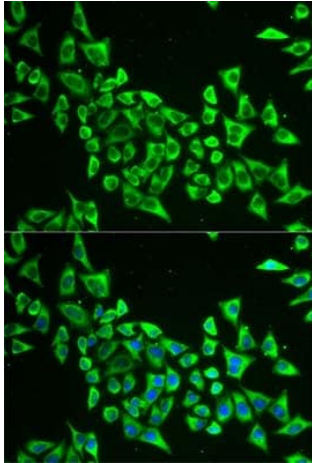
**Lane 1 :** SW620 cell extract

**Lane 2 :** HL60 cell extract

**Lane 3 :** HeLa cell extract

**Lane 4 :** HepG2 cell extract

**Predicted band size:** 50 kDa



Immunofluorescent analysis of HeLa cells labeling MRPS30 (green) with ab196940 at 1/50 dilution. Blue: DAPI for nuclear staining.

Immunocytochemistry/ Immunofluorescence - Anti-MRPS30 antibody - C-terminal (ab196940)

**Please note:** All products are "FOR RESEARCH USE ONLY. NOT FOR USE IN DIAGNOSTIC PROCEDURES"

### Our Abpromise to you: Quality guaranteed and expert technical support

---

- Replacement or refund for products not performing as stated on the datasheet
- Valid for 12 months from date of delivery
- Response to your inquiry within 24 hours
- We provide support in Chinese, English, French, German, Japanese and Spanish
- Extensive multi-media technical resources to help you
- We investigate all quality concerns to ensure our products perform to the highest standards

If the product does not perform as described on this datasheet, we will offer a refund or replacement. For full details of the Abpromise, please visit <https://www.abcam.com/abpromise> or contact our technical team.

### Terms and conditions

---

- Guarantee only valid for products bought direct from Abcam or one of our authorized distributors