

### Anti-MS4A6A antibody ab156278

[1 Image](#)

#### Overview

<b>Product name</b>	Anti-MS4A6A antibody
<b>Description</b>	Rabbit polyclonal to MS4A6A
<b>Host species</b>	Rabbit
<b>Specificity</b>	At least three isoforms of MS4A6A are known to exist; ab156278 will detect the two longer isoforms. ab156278 is predicted to not cross-react with MS4A family members.
<b>Tested applications</b>	<b>Suitable for:</b> WB
<b>Species reactivity</b>	<b>Reacts with:</b> Human
<b>Immunogen</b>	Synthetic peptide corresponding to Human MS4A6A (N terminal). This antibody was raised against a 19 amino acid synthetic peptide near the amino terminus of human MS4A6A.
<b>Positive control</b>	293 cell lysate
<b>General notes</b>	<p>The Life Science industry has been in the grips of a reproducibility crisis for a number of years. Abcam is leading the way in addressing this with our range of recombinant monoclonal antibodies and knockout edited cell lines for gold-standard validation. Please check that this product meets your needs before purchasing.</p> <p>If you have any questions, special requirements or concerns, please send us an inquiry and/or contact our Support team ahead of purchase. Recommended alternatives for this product can be found below, along with publications, customer reviews and Q&amp;As</p>

#### Properties

<b>Form</b>	Liquid
<b>Storage instructions</b>	Shipped at 4°C. Upon delivery aliquot and store at -20°C. Avoid repeated freeze / thaw cycles.
<b>Storage buffer</b>	<p>pH: 7.2</p> <p>Preservative: 0.02% Sodium azide</p> <p>Constituent: 99% PBS</p>
<b>Purity</b>	Immunogen affinity purified
<b>Clonality</b>	Polyclonal
<b>Isotype</b>	IgG

#### Applications

## The Abpromise guarantee

Our **Abpromise guarantee** covers the use of ab156278 in the following tested applications.

The application notes include recommended starting dilutions; optimal dilutions/concentrations should be determined by the end user.

Application	Abreviews	Notes
WB		Use a concentration of 1 - 2 µg/ml. Predicted molecular weight: 27 kDa.

## Target

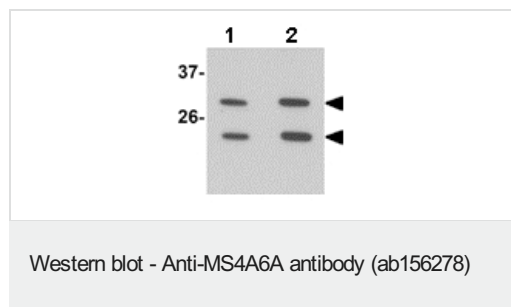
### Relevance

MS4A6A is a member of the membrane-spanning 4A gene family and may be involved in signal transduction as a component of a multimeric receptor complex. There are three named isoforms.

### Cellular localization

Membrane; Multi-pass membrane protein

## Images



**Lane 1 :** Anti-MS4A6A antibody (ab156278) at 1 µg/ml

**Lane 2 :** Anti-MS4A6A antibody (ab156278) at 2 µg/ml

**All lanes :** 293 cell extract

Lysates/proteins at 15 µg per lane.

Developed using the ECL technique.

**Predicted band size:** 27 kDa

**Please note:** All products are "FOR RESEARCH USE ONLY. NOT FOR USE IN DIAGNOSTIC PROCEDURES"

## Our Abpromise to you: Quality guaranteed and expert technical support

- Replacement or refund for products not performing as stated on the datasheet
- Valid for 12 months from date of delivery
- Response to your inquiry within 24 hours
- We provide support in Chinese, English, French, German, Japanese and Spanish
- Extensive multi-media technical resources to help you
- We investigate all quality concerns to ensure our products perform to the highest standards

If the product does not perform as described on this datasheet, we will offer a refund or replacement. For full details of the Abpromise, please visit <https://www.abcam.com/abpromise> or contact our technical team.

## Terms and conditions

---

- Guarantee only valid for products bought direct from Abcam or one of our authorized distributors