




Product datasheet

Anti-MSRA antibody ab232901

6 Images

Overview

Product name	Anti-MSRA antibody
Description	Rabbit polyclonal to MSRA
Host species	Rabbit
Tested applications	Suitable for: WB, IHC-P
Species reactivity	Reacts with: Rat, Human, Pig Predicted to work with: Cow 
Immunogen	Recombinant fragment (His-T7-tag) corresponding to Human MSRA aa 1 to the C-terminus. (Expressed in E.coli). Database link: Q9UJ68 <div>  Run BLAST with  Run BLAST with </div>
Positive control	WB: Recombinant human MSRA protein; HT1080 and HepG2 cell lysates; Pig and rat kidney lysates. IHC-P: Human brain tissue.
General notes	<p>The Life Science industry has been in the grips of a reproducibility crisis for a number of years. Abcam is leading the way in addressing this with our range of recombinant monoclonal antibodies and knockout edited cell lines for gold-standard validation. Please check that this product meets your needs before purchasing.</p> <p>If you have any questions, special requirements or concerns, please send us an inquiry and/or contact our Support team ahead of purchase. Recommended alternatives for this product can be found below, along with publications, customer reviews and Q&As</p>

Properties

Form	Liquid
Storage instructions	Shipped at 4°C. Store at +4°C short term (1-2 weeks). Upon delivery aliquot. Store at -20°C long term. Avoid freeze / thaw cycle.
Storage buffer	pH: 7.40 Preservative: 0.011% Proclin 300 Constituents: 55.77% Glycerol (glycerin, glycerine), 44.219% PBS
Purity	Immunogen affinity purified
Purification notes	ab232901 was purified by antigen-specific affinity chromatography followed by Protein A affinity chromatography.

Clonality	Polyclonal
Isotype	IgG

Applications

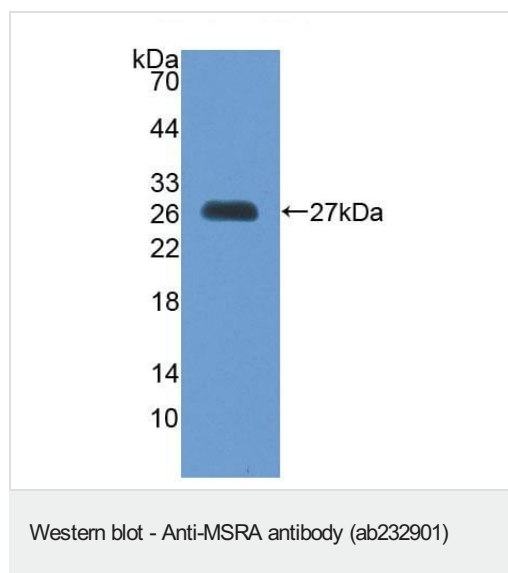
The Abpromise guarantee Our **Abpromise guarantee** covers the use of ab232901 in the following tested applications. The application notes include recommended starting dilutions; optimal dilutions/concentrations should be determined by the end user.

Application	Abreviews	Notes
WB		Use a concentration of 0.2 - 2 µg/ml. Predicted molecular weight: 26 kDa.
IHC-P		Use a concentration of 5 - 20 µg/ml.

Target

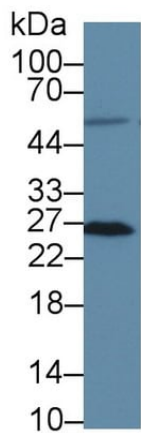
Function	Has an important function as a repair enzyme for proteins that have been inactivated by oxidation. Catalyzes the reversible oxidation-reduction of methionine sulfoxide in proteins to methionine.
Tissue specificity	Ubiquitous. Highest expression in adult kidney and cerebellum, followed by liver, heart ventricles, bone marrow and hippocampus.
Sequence similarities	Belongs to the MsrA Met sulfoxide reductase family.
Cellular localization	Cytoplasm; Cytoplasm. Nucleus and Mitochondrion.

Images



Anti-MSRA antibody (ab232901) at 2 µg/ml + Recombinant human MSRA protein

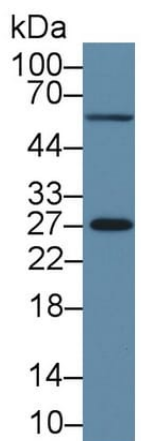
Predicted band size: 26 kDa



Western blot - Anti-MSRA antibody (ab232901)

Anti-MSRA antibody (ab232901) at 2 μ g/ml + HT1080 (human fibrosarcoma cell line) cell lysate

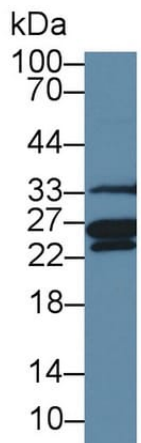
Predicted band size: 26 kDa



Western blot - Anti-MSRA antibody (ab232901)

Anti-MSRA antibody (ab232901) at 2 μ g/ml + HepG2 (human liver hepatocellular carcinoma cell line) cell lysate

Predicted band size: 26 kDa



Western blot - Anti-MSRA antibody (ab232901)

Anti-MSRA antibody (ab232901) at 2 μ g/ml + Pig kidney lysate

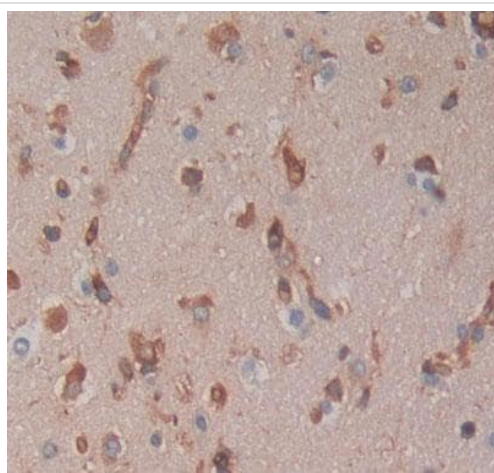
Predicted band size: 26 kDa



Western blot - Anti-MSRA antibody (ab232901)

Anti-MSRA antibody (ab232901) at 3 µg/ml + Rat kidney lysate

Predicted band size: 26 kDa



Immunohistochemistry (Formalin/PFA-fixed paraffin-embedded sections) - Anti-MSRA antibody (ab232901)

Formalin-fixed, paraffin-embedded human brain tissue stained for MSRA using ab232901 at 20 µg/ml in immunohistochemical analysis. DAB staining.

Please note: All products are "FOR RESEARCH USE ONLY. NOT FOR USE IN DIAGNOSTIC PROCEDURES"

Our Abpromise to you: Quality guaranteed and expert technical support

- Replacement or refund for products not performing as stated on the datasheet
- Valid for 12 months from date of delivery
- Response to your inquiry within 24 hours
- We provide support in Chinese, English, French, German, Japanese and Spanish
- Extensive multi-media technical resources to help you
- We investigate all quality concerns to ensure our products perform to the highest standards

If the product does not perform as described on this datasheet, we will offer a refund or replacement. For full details of the Abpromise, please visit <https://www.abcam.com/abpromise> or contact our technical team.

Terms and conditions

- Guarantee only valid for products bought direct from Abcam or one of our authorized distributors