

Product datasheet

Anti-MT antibody ab235036

3 Images

Overview

Product name	Anti-MT antibody
Description	Rabbit polyclonal to MT
Host species	Rabbit
Tested applications	Suitable for: WB, IHC-P
Species reactivity	Reacts with: Mouse, Rat, Human
Immunogen	Recombinant fragment corresponding to Human MT aa 1-150. Database link: Q8IVS2 Run BLAST with Run BLAST with
Positive control	WB: Rat heart lysate; Mouse liver lysate. IHC-P: Human liver and adrenal gland tissue.
General notes	<p>The Life Science industry has been in the grips of a reproducibility crisis for a number of years. Abcam is leading the way in addressing this with our range of recombinant monoclonal antibodies and knockout edited cell lines for gold-standard validation. Please check that this product meets your needs before purchasing.</p> <p>If you have any questions, special requirements or concerns, please send us an inquiry and/or contact our Support team ahead of purchase. Recommended alternatives for this product can be found below, along with publications, customer reviews and Q&As</p>

Properties

Form	Liquid
Storage instructions	Shipped at 4°C. Store at +4°C short term (1-2 weeks). Upon delivery aliquot. Store at -20°C long term. Avoid freeze / thaw cycle.
Storage buffer	pH: 7.40 Preservative: 0.03% Proclin 300 Constituents: PBS, 50% Glycerol (glycerin, glycerine)
Purity	Protein G purified
Purification notes	Purity >95%.
Clonality	Polyclonal
Isotype	IgG

Applications

The Abpromise guarantee

Our **Abpromise guarantee** covers the use of ab235036 in the following tested applications.

The application notes include recommended starting dilutions; optimal dilutions/concentrations should be determined by the end user.

Application	Abreviews	Notes
WB		1/500 - 1/5000. Detects a band of approximately 43 kDa (predicted molecular weight: 43 kDa).
IHC-P		1/20 - 1/200.

Target

Function

Catalyzes the transfer of a malonyl moiety from malonyl-CoA to the free thiol group of the phosphopantetheine arm of the mitochondrial ACP protein (NDUFAB1). This suggests the existence of the biosynthesis of fatty acids in mitochondrias.

Pathway

Lipid metabolism; fatty acid biosynthesis.

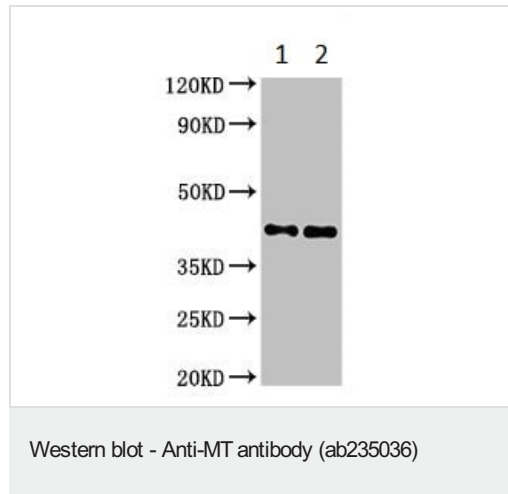
Sequence similarities

Belongs to the type II malonyltransferase family.

Cellular localization

Mitochondrion.

Images



All lanes : Anti-MT antibody (ab235036) at 1/500 dilution

Lane 1 : Rat heart lysate

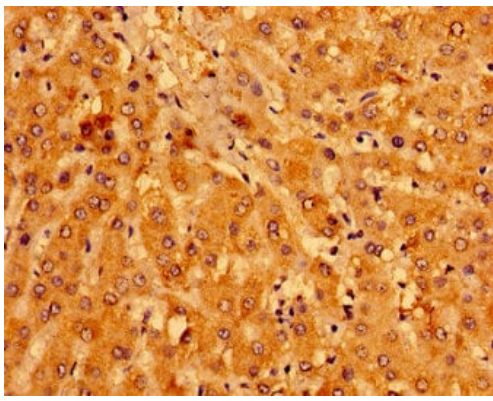
Lane 2 : Mouse liver lysate

Secondary

All lanes : Goat polyclonal to rabbit IgG at 1/50000 dilution

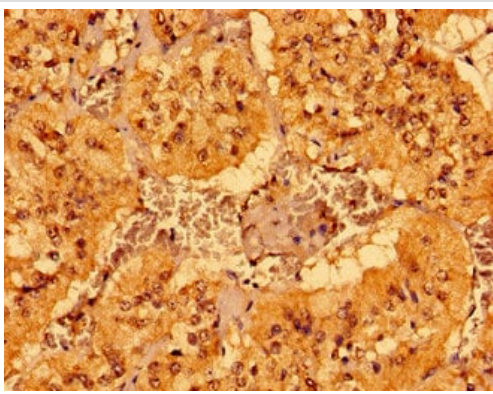
Predicted band size: 43 kDa

Observed band size: 43 kDa



Immunohistochemistry (Formalin/PFA-fixed paraffin-embedded sections) - Anti-MT antibody (ab235036)

Paraffin-embedded human liver tissue stained for MT using ab235036 at 1/100 dilution in immunohistochemical analysis.



Immunohistochemistry (Formalin/PFA-fixed paraffin-embedded sections) - Anti-MT antibody (ab235036)

Paraffin-embedded human adrenal gland tissue stained for MT using ab235036 at 1/100 dilution in immunohistochemical analysis.

Please note: All products are "FOR RESEARCH USE ONLY. NOT FOR USE IN DIAGNOSTIC PROCEDURES"

Our Abpromise to you: Quality guaranteed and expert technical support

- Replacement or refund for products not performing as stated on the datasheet
- Valid for 12 months from date of delivery
- Response to your inquiry within 24 hours

- We provide support in Chinese, English, French, German, Japanese and Spanish
- Extensive multi-media technical resources to help you
- We investigate all quality concerns to ensure our products perform to the highest standards

If the product does not perform as described on this datasheet, we will offer a refund or replacement. For full details of the Abpromise, please visit <https://www.abcam.com/abpromise> or contact our technical team.

Terms and conditions

- Guarantee only valid for products bought direct from Abcam or one of our authorized distributors