

Product datasheet

Anti-MTA1 antibody ab226960

[1 References](#) [4 Images](#)

Overview

Product name	Anti-MTA1 antibody
Description	Rabbit polyclonal to MTA1
Host species	Rabbit
Tested applications	Suitable for: IHC-P, ICC/IF
Species reactivity	Reacts with: Mouse, Rat, Human
Positive control	IHC-P: Human breast carcinoma tissue; Mouse ovary tissue; Rat hind brain tissue. ICC/IF: A431 cells.

General notes

The Life Science industry has been in the grips of a reproducibility crisis for a number of years. Abcam is leading the way in addressing this with our range of recombinant monoclonal antibodies and knockout edited cell lines for gold-standard validation. Please check that this product meets your needs before purchasing.

If you have any questions, special requirements or concerns, please send us an inquiry and/or contact our Support team ahead of purchase. Recommended alternatives for this product can be found below, along with publications, customer reviews and Q&As

Properties

Form	Liquid
Storage instructions	Shipped at 4°C. Store at +4°C short term (1-2 weeks). Upon delivery aliquot. Store at -20°C long term. Avoid freeze / thaw cycle.
Storage buffer	pH: 7.00 Preservative: 0.01% Thimerosal (merthiolate) Constituents: 79.99% PBS, 20% Glycerol (glycerin, glycerine)
Purity	Immunogen affinity purified
Clonality	Polyclonal

Applications

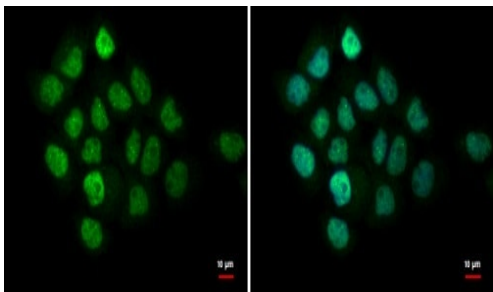
The Abpromise guarantee Our **Abpromise guarantee** covers the use of ab226960 in the following tested applications. The application notes include recommended starting dilutions; optimal dilutions/concentrations should be determined by the end user.

Application	Abreviews	Notes
IHC-P		1/100 - 1/1000.
ICC/IF		1/100 - 1/1000.

Target

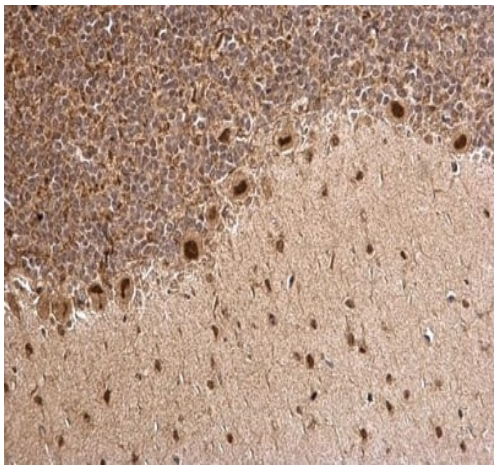
Function	May be involved in the regulation of gene expression by covalent modification of histone proteins. Isoform Long is a corepressor of estrogen receptor (ER). Isoform Short binds to ER and sequesters it in the cytoplasm and enhances non-genomic responses of ER.
Tissue specificity	Widely expressed. High expression in brain, ovaries, adrenal glands and virgin mammary glands. Higher in tumors than in adjacent normal tissue from the same individual.
Sequence similarities	Contains 1 BAH domain. Contains 1 ELM2 domain. Contains 1 GATA-type zinc finger. Contains 1 SANT domain.
Developmental stage	Highly expressed in metastatic cells.
Domain	Isoform Short contains a Leu-Arg-Ile-Leu-Leu motif (ER binding motif).
Cellular localization	Cytoplasm and Nucleus.

Images



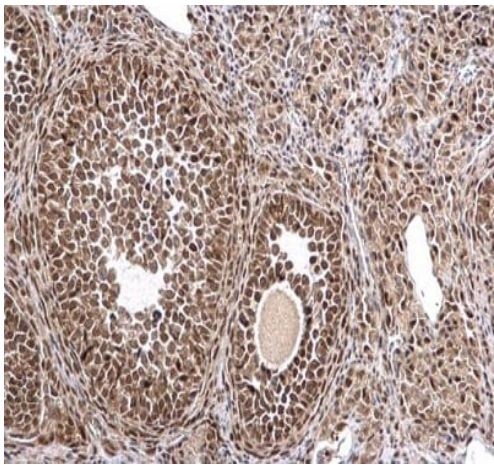
4% paraformaldehyde-fixed A431 (human epidermoid carcinoma cell line) cells stained for MTA1 (green) using ab226960 at 1/500 dilution in ICC/IF. Nuclear Counterstain: Hoechst 33342 (blue).

Immunocytochemistry/ Immunofluorescence - Anti-MTA1 antibody (ab226960)



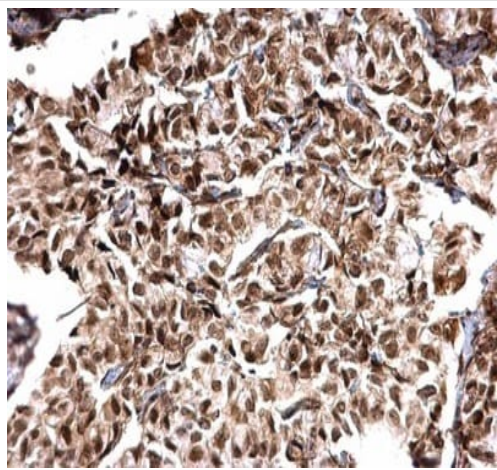
Paraffin-embedded rat hind brain tissue stained for MTA1 using ab226960 at 1/500 dilution in immunohistochemical analysis.

Immunohistochemistry (Formalin/PFA-fixed paraffin-embedded sections) - Anti-MTA1 antibody (ab226960)



Paraffin-embedded mouse ovary tissue stained for MTA1 using ab226960 at 1/500 dilution in immunohistochemical analysis.

Immunohistochemistry (Formalin/PFA-fixed paraffin-embedded sections) - Anti-MTA1 antibody (ab226960)



Paraffin-embedded human breast carcinoma tissue stained for MTA1 using ab226960 at 1/500 dilution in immunohistochemical analysis.

Immunohistochemistry (Formalin/PFA-fixed paraffin-embedded sections) - Anti-MTA1 antibody (ab226960)

Please note: All products are "FOR RESEARCH USE ONLY. NOT FOR USE IN DIAGNOSTIC PROCEDURES"

Our Abpromise to you: Quality guaranteed and expert technical support

- Replacement or refund for products not performing as stated on the datasheet
- Valid for 12 months from date of delivery
- Response to your inquiry within 24 hours
- We provide support in Chinese, English, French, German, Japanese and Spanish
- Extensive multi-media technical resources to help you
- We investigate all quality concerns to ensure our products perform to the highest standards

If the product does not perform as described on this datasheet, we will offer a refund or replacement. For full details of the Abpromise, please visit <https://www.abcam.com/abpromise> or contact our technical team.

Terms and conditions

- Guarantee only valid for products bought direct from Abcam or one of our authorized distributors