




Product datasheet

Anti-MTA3 antibody ab87275

★★★★★ [3 Abreviews](#) [5 References](#) [2 Images](#)

Overview

Product name	Anti-MTA3 antibody
Description	Rabbit polyclonal to MTA3
Host species	Rabbit
Tested applications	Suitable for: IHC-P
Species reactivity	Reacts with: Human Predicted to work with: Chimpanzee, Rhesus monkey, Orangutan 
Immunogen	Synthetic peptide corresponding to a region within the internal sequence amino acids 400-450 (CRLCAICWLYWKKYGGGLKMPTQSEEEKLSPSPPTTEDPRV RSHVSRQAMQG M) of Human MTA3 (Swiss-Prot entry Q9BTC8, GeneID 57504)  Run BLAST with  Run BLAST with
General notes	Concentration is optimized for IHC and not determined The Life Science industry has been in the grips of a reproducibility crisis for a number of years. Abcam is leading the way in addressing this with our range of recombinant monoclonal antibodies and knockout edited cell lines for gold-standard validation. Please check that this product meets your needs before purchasing. If you have any questions, special requirements or concerns, please send us an inquiry and/or contact our Support team ahead of purchase. Recommended alternatives for this product can be found below, along with publications, customer reviews and Q&As

Properties

Form	Liquid
Storage instructions	Shipped at 4°C. Upon delivery aliquot and store at -20°C. Avoid freeze / thaw cycles.
Storage buffer	pH: 6.8 Preservative: 0.09% Sodium azide Constituents: 0.1% BSA, Tris buffered saline
Purity	Immunogen affinity purified
Purification notes	MTA3 antibody was affinity purified using an epitope specific to MTA3 immobilized on solid support.

Clonality	Polyclonal
Isotype	IgG

Applications

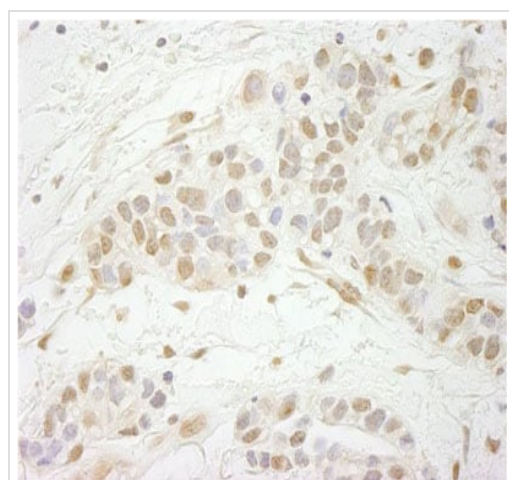
The Abpromise guarantee Our **Abpromise guarantee** covers the use of ab87275 in the following tested applications. The application notes include recommended starting dilutions; optimal dilutions/concentrations should be determined by the end user.

Application	Abreviews	Notes
IHC-P		1/100 - 1/500. Perform heat mediated antigen retrieval with Tris/EDTA buffer pH 9.0 before commencing with IHC staining protocol.

Target

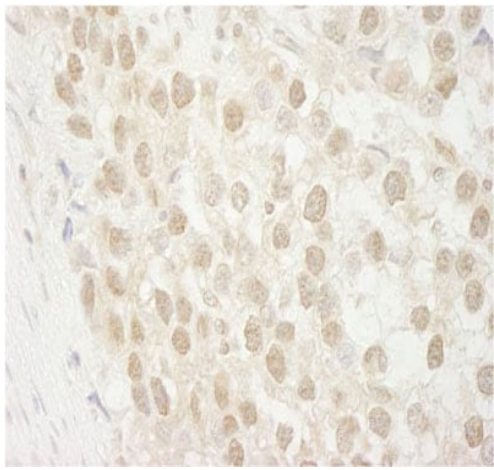
Function	Plays a role in maintenance of the normal epithelial architecture through the repression of SNAI1 transcription in a histone deacetylase-dependent manner, and thus the regulation of E-cadherin levels.
Tissue specificity	No expression in nonepithelial cells.
Sequence similarities	Contains 1 BAH domain. Contains 1 ELM2 domain. Contains 1 GATA-type zinc finger. Contains 1 SANT domain.
Cellular localization	Nucleus.

Images



ab87275 at 1/250 dilution staining MTA3 in Human breast carcinoma by Immunohistochemistry Formalin-fixed, Paraffin-embedded tissue. Detection: DAB staining

Immunohistochemistry (Formalin/PFA-fixed paraffin-embedded sections) - Anti-MTA3 antibody (ab87275)



Immunohistochemistry (Formalin/PFA-fixed paraffin-embedded sections) - Anti-MTA3 antibody (ab87275)

ab87275 at 1/250 dilution staining MTA3 in Human seminoma by Immunohistochemistry Formalin-fixed, Paraffin-embedded tissue.
Detection: DAB staining

Please note: All products are "FOR RESEARCH USE ONLY. NOT FOR USE IN DIAGNOSTIC PROCEDURES"

Our Abpromise to you: Quality guaranteed and expert technical support

- Replacement or refund for products not performing as stated on the datasheet
- Valid for 12 months from date of delivery
- Response to your inquiry within 24 hours
- We provide support in Chinese, English, French, German, Japanese and Spanish
- Extensive multi-media technical resources to help you
- We investigate all quality concerns to ensure our products perform to the highest standards

If the product does not perform as described on this datasheet, we will offer a refund or replacement. For full details of the Abpromise, please visit <https://www.abcam.com/abpromise> or contact our technical team.

Terms and conditions

- Guarantee only valid for products bought direct from Abcam or one of our authorized distributors