

Product datasheet

Anti-MTAP antibody [EPR6892] α b126623

Recombinant RabMAb

[1 Abreviews](#) [1 References](#) [2 Images](#)

Overview

Product name	Anti-MTAP antibody [EPR6892]
Description	Rabbit monoclonal [EPR6892] to MTAP
Host species	Rabbit
Tested applications	Suitable for: WB Unsuitable for: Flow Cyt, ICC/IF or IHC-P
Species reactivity	Reacts with: Mouse, Rat, Human
Immunogen	Synthetic peptide. This information is proprietary to Abcam and/or its suppliers.
Positive control	WB: HeLa whole cell lysate, human heart lysate, NIH/3T3 whole cell lysate, mouse heart lysate, rat c6 whole cell lysate, rat heart lysate
General notes	This product is a recombinant monoclonal antibody, which offers several advantages including: <ul style="list-style-type: none"> - High batch-to-batch consistency and reproducibility - Improved sensitivity and specificity - Long-term security of supply - Animal-free production For more information see here . Our RabMAb [®] technology is a patented hybridoma-based technology for making rabbit monoclonal antibodies. For details on our patents, please refer to RabMAb[®] patents .

Properties

Form	Liquid
Storage instructions	Shipped at 4°C. Store at -20°C. Stable for 12 months at -20°C.
Storage buffer	pH: 7.20 Preservative: 0.01% Sodium azide Constituents: 59% PBS, 40% Glycerol (glycerin, glycerine), 0.05% BSA
Purity	Protein A purified
Clonality	Monoclonal
Clone number	EPR6892
Isotype	IgG

Applications

The Abpromise guarantee

Our **Abpromise guarantee** covers the use of ab126623 in the following tested applications.

The application notes include recommended starting dilutions; optimal dilutions/concentrations should be determined by the end user.

Application	Abreviews	Notes
WB		1/1000 - 1/10000. Detects a band of approximately 29 kDa (predicted molecular weight: 31 kDa).

Application notes

Is unsuitable for Flow Cyt, ICC/IF or IHC-P.

Target

Function

Plays a major role in polyamine metabolism and is important for the salvage of both adenine and methionine.

Tissue specificity

Ubiquitously expressed.

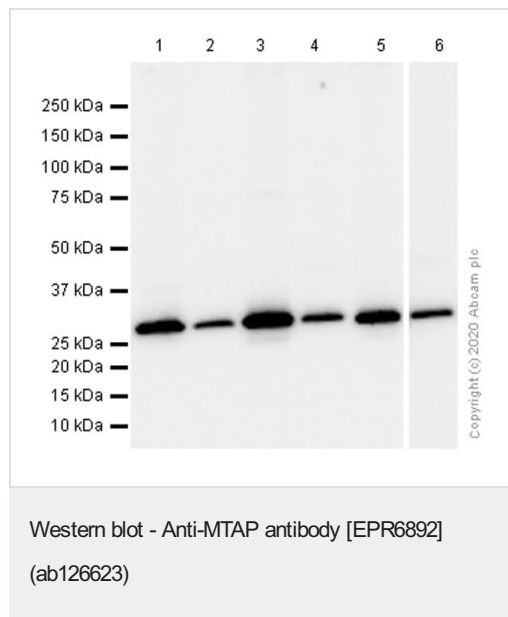
Sequence similarities

Belongs to the PNP/MTAP phosphorylase family.

Cellular localization

Cytoplasm.

Images



Lanes 1 & 3 : Anti-MTAP antibody [EPR6892] (ab126623) at 1/1000 dilution (Purified)

Lanes 2 & 4-6 : Anti-MTAP antibody [EPR6892] (ab126623) at 1/1000 dilution

Lane 1 : HeLa (Human cervix adenocarcinoma epithelial cell) whole cell lysate

Lane 2 : Human heart lysate

Lane 3 : NIH/3T3 (Mouse embryonic fibroblast) whole cell lysate

Lane 4 : Mouse heart lysate

Lane 5 : C6 (Rat glial tumor glial cell) whole cell lysate

Lane 6 : Rat heart lysate

Lysates/proteins at 20 µg per lane.

Secondary

All lanes : Goat Anti-Rabbit IgG (HRP) with minimal cross-reactivity with human IgG at 1/2000 dilution

Predicted band size: 31 kDa

Why choose a recombinant antibody?



Research with confidence
Consistent and reproducible results



Long-term and scalable supply
Recombinant technology



Success from the first experiment
Confirmed specificity



Ethical standards compliant
Animal-free production

Anti-MTAP antibody [EPR6892] (ab126623)

Please note: All products are "FOR RESEARCH USE ONLY. NOT FOR USE IN DIAGNOSTIC PROCEDURES"

Our Abpromise to you: Quality guaranteed and expert technical support

- Replacement or refund for products not performing as stated on the datasheet
- Valid for 12 months from date of delivery
- Response to your inquiry within 24 hours
- We provide support in Chinese, English, French, German, Japanese and Spanish
- Extensive multi-media technical resources to help you
- We investigate all quality concerns to ensure our products perform to the highest standards

If the product does not perform as described on this datasheet, we will offer a refund or replacement. For full details of the Abpromise, please visit <https://www.abcam.com/abpromise> or contact our technical team.

Terms and conditions

- Guarantee only valid for products bought direct from Abcam or one of our authorized distributors