

Product datasheet

Anti-MTCO2 antibody [4B12A5] ab110271

★☆☆☆☆ [1 Abreviews](#) [37 References](#) [1 Image](#)

Overview

Product name	Anti-MTCO2 antibody [4B12A5]
Description	Mouse monoclonal [4B12A5] to MTCO2
Host species	Mouse
Tested applications	Suitable for: WB
Species reactivity	Reacts with: Saccharomyces cerevisiae
Immunogen	Full length native protein (purified). This information is proprietary to Abcam and/or its suppliers.
Positive control	Mitochondria from yeast membrane extract
General notes	<p>This antibody clone is manufactured by Abcam. If you require a custom buffer formulation or conjugation for your experiments, please contact orders@abcam.com.</p> <p>The Life Science industry has been in the grips of a reproducibility crisis for a number of years. Abcam is leading the way in addressing this with our range of recombinant monoclonal antibodies and knockout edited cell lines for gold-standard validation. Please check that this product meets your needs before purchasing.</p> <p>If you have any questions, special requirements or concerns, please send us an inquiry and/or contact our Support team ahead of purchase. Recommended alternatives for this product can be found below, along with publications, customer reviews and Q&As</p> <p>Product was previously marketed under the MitoSciences sub-brand.</p>

Properties

Form	Liquid
Storage instructions	Shipped at 4°C. Store at +4°C. Do Not Freeze.
Storage buffer	pH: 7.5 Preservative: 0.02% Sodium azide Constituent: HEPES buffered saline
Purity	IgG fraction
Purification notes	Near homogeneity as judged by SDS-PAGE. ab110271 was produced in vitro using hybridomas grown in serum-free medium, and then purified by biochemical fractionation.
Clonality	Monoclonal

Clone number	4B12A5
Isotype	IgG2a
Light chain type	kappa

Applications

The Abpromise guarantee Our **Abpromise guarantee** covers the use of ab110271 in the following tested applications. The application notes include recommended starting dilutions; optimal dilutions/concentrations should be determined by the end user.

Application	Abreviews	Notes
WB	★☆☆☆☆ (1)	Use a concentration of 2 µg/ml. Predicted molecular weight: 26 kDa.

Target

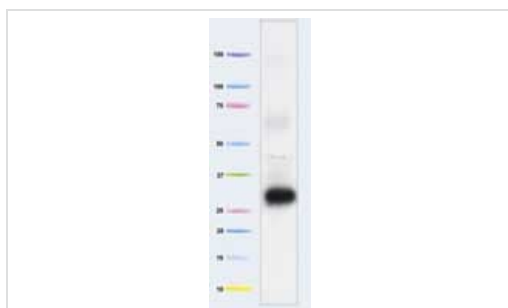
Function Cytochrome c oxidase is the component of the respiratory chain that catalyzes the reduction of oxygen to water. Subunits 1-3 form the functional core of the enzyme complex. Subunit 2 transfers the electrons from cytochrome c via its binuclear copper A center to the bimetallic center of the catalytic subunit 1.

Involvement in disease Defects in MT-CO2 are a cause of mitochondrial complex IV deficiency (MT-C4D) [MIM:220110]; also known as cytochrome c oxidase deficiency. A disorder of the mitochondrial respiratory chain with heterogeneous clinical manifestations, ranging from isolated myopathy to severe multisystem disease affecting several tissues and organs. Features include hypertrophic cardiomyopathy, hepatomegaly and liver dysfunction, hypotonia, muscle weakness, exercise intolerance, developmental delay, delayed motor development and mental retardation. A subset of patients manifest Leigh syndrome.

Sequence similarities Belongs to the cytochrome c oxidase subunit 2 family.

Cellular localization Mitochondrion inner membrane.

Images



Western blot - Anti-MT-CO2 antibody [4B12A5] (ab110271)

Anti-MT-CO2 antibody [4B12A5] (ab110271) at 2 µg/ml + Mitochondria from yeast membrane extract at 10 µg

Predicted band size: 26 kDa

Our Abpromise to you: Quality guaranteed and expert technical support

- Replacement or refund for products not performing as stated on the datasheet
- Valid for 12 months from date of delivery
- Response to your inquiry within 24 hours

- We provide support in Chinese, English, French, German, Japanese and Spanish
- Extensive multi-media technical resources to help you
- We investigate all quality concerns to ensure our products perform to the highest standards

If the product does not perform as described on this datasheet, we will offer a refund or replacement. For full details of the Abpromise, please visit <https://www.abcam.com/abpromise> or contact our technical team.

Terms and conditions

- Guarantee only valid for products bought direct from Abcam or one of our authorized distributors