

## Product datasheet

# Anti-MTG16 antibody ab234985

[2 Images](#)

### Overview

---

<b>Product name</b>	Anti-MTG16 antibody
<b>Description</b>	Rabbit polyclonal to MTG16
<b>Host species</b>	Rabbit
<b>Tested applications</b>	<b>Suitable for:</b> IHC-P, WB
<b>Species reactivity</b>	<b>Reacts with:</b> Human
<b>Immunogen</b>	Recombinant fragment corresponding to Human MTG16 aa 39-159. Database link: <a href="#">O75081</a>
<b>Positive control</b>	WB: Jurkat, HEK-293T and HL-60 whole cell lysates. IHC-P: Human spleen tissue.
<b>General notes</b>	<p>The Life Science industry has been in the grips of a reproducibility crisis for a number of years. Abcam is leading the way in addressing this with our range of recombinant monoclonal antibodies and knockout edited cell lines for gold-standard validation. Please check that this product meets your needs before purchasing.</p> <p>If you have any questions, special requirements or concerns, please send us an inquiry and/or contact our Support team ahead of purchase. Recommended alternatives for this product can be found below, along with publications, customer reviews and Q&amp;As</p>

### Properties

---

<b>Form</b>	Liquid
<b>Storage instructions</b>	Shipped at 4°C. Store at +4°C short term (1-2 weeks). Upon delivery aliquot. Store at -20°C long term. Avoid freeze / thaw cycle.
<b>Storage buffer</b>	pH: 7.40 Preservative: 0.03% Proclin 300 Constituents: PBS, 50% Glycerol (glycerin, glycerine)
<b>Purity</b>	Protein G purified
<b>Purification notes</b>	Purity >95%.
<b>Clonality</b>	Polyclonal
<b>Isotype</b>	IgG

### Applications

## The Abpromise guarantee

Our **Abpromise guarantee** covers the use of ab234985 in the following tested applications.

The application notes include recommended starting dilutions; optimal dilutions/concentrations should be determined by the end user.

Application	Abreviews	Notes
IHC-P		1/200 - 1/500.
WB		1/500 - 1/5000. Predicted molecular weight: 71 kDa.

## Target

### Function

Functions as a transcriptional repressor. Regulates the proliferation and the differentiation of erythroid progenitors by repressing the expression of TAL1 target genes. Plays a role in granulocyte differentiation.

Isoform 2 functions as an A-kinase-anchoring protein.

### Tissue specificity

Widely expressed with higher expression in heart, pancreas, skeletal muscle, spleen, thymus and peripheral blood leukocytes. Expressed in hematopoietic cells (at protein level).

### Involvement in disease

Note=A chromosomal aberration involving CBFA2T3 is found in therapy-related myeloid malignancies. Translocation t(16;21)(q24;q22) that forms a RUNX1-CBFA2T3 fusion protein.

### Sequence similarities

Belongs to the CBFA2T family.

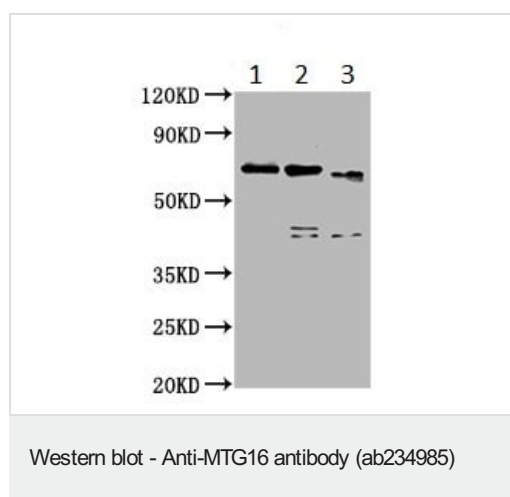
Contains 1 MYND-type zinc finger.

Contains 1 TAFH (NHR1) domain.

### Cellular localization

Nucleus > nucleolus. The RUNX1-CBFA2T3 fusion protein localizes to the nucleoplasm and Nucleus > nucleoplasm. Golgi apparatus membrane.

## Images



**All lanes :** Anti-MTG16 antibody (ab234985) at 1/500 dilution

**Lane 1 :** Jurkat (human T cell leukemia cell line from peripheral blood) whole cell lysate

**Lane 2 :** HEK-293T (human epithelial cell line from embryonic kidney transformed with large T antigen) whole cell lysate

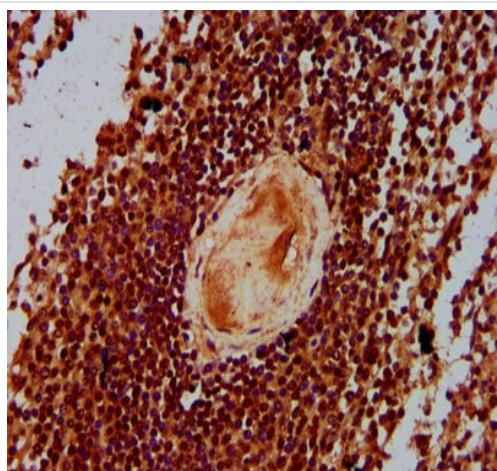
**Lane 3 :** HL-60 (human promyelocytic leukemia cell line) whole cell lysate

### Secondary

**All lanes :** Goat polyclonal to rabbit IgG at 1/50000 dilution

**Predicted band size:** 71 kDa

**Observed band size:** 72 kDa



Immunohistochemistry (Formalin/PFA-fixed paraffin-embedded sections) - Anti-MTG16 antibody (ab234985)

Paraffin-embedded human spleen tissue stained for MTG16 using ab234985 at 1/300 dilution in immunohistochemical analysis.

After dewaxing and hydration, antigen retrieval was mediated by high pressure in a citrate buffer (pH 6.0). Section was blocked with 10% normal goat serum 30minutes at room temperature. Then primary antibody (1% BSA) was incubated at 4°C overnight. The primary is detected by a biotinylated secondary antibody and visualized tissue using an HRP conjugated SP system.

**Please note:** All products are "FOR RESEARCH USE ONLY. NOT FOR USE IN DIAGNOSTIC PROCEDURES"

### Our Abpromise to you: Quality guaranteed and expert technical support

---

- Replacement or refund for products not performing as stated on the datasheet
- Valid for 12 months from date of delivery
- Response to your inquiry within 24 hours
- We provide support in Chinese, English, French, German, Japanese and Spanish
- Extensive multi-media technical resources to help you
- We investigate all quality concerns to ensure our products perform to the highest standards

If the product does not perform as described on this datasheet, we will offer a refund or replacement. For full details of the Abpromise, please visit <https://www.abcam.com/abpromise> or contact our technical team.

### Terms and conditions

---

- Guarantee only valid for products bought direct from Abcam or one of our authorized distributors