




## Product datasheet

# Anti-MTHFD1L antibody - C-terminal ab229708

[2 References](#) [3 Images](#)

### Overview

<b>Product name</b>	Anti-MTHFD1L antibody - C-terminal
<b>Description</b>	Rabbit polyclonal to MTHFD1L - C-terminal
<b>Host species</b>	Rabbit
<b>Tested applications</b>	<b>Suitable for:</b> WB, IHC-P
<b>Species reactivity</b>	<b>Reacts with:</b> Human <b>Predicted to work with:</b> Mouse, Cow 
<b>Immunogen</b>	Recombinant fragment corresponding to Human MTHFD1L aa 750 to the C-terminus (C terminal). Database link: <a href="#">Q6UB35</a> <div>  <a href="#">Run BLAST with</a>  <a href="#">Run BLAST with</a> </div>
<b>Positive control</b>	WB: Colo320, HepG2 and HeLa whole cell lysates. IHC-P: Human colon cancer and kidney tissues.
<b>General notes</b>	<p>The Life Science industry has been in the grips of a reproducibility crisis for a number of years. Abcam is leading the way in addressing this with our range of recombinant monoclonal antibodies and knockout edited cell lines for gold-standard validation. Please check that this product meets your needs before purchasing.</p> <p>If you have any questions, special requirements or concerns, please send us an inquiry and/or contact our Support team ahead of purchase. Recommended alternatives for this product can be found below, along with publications, customer reviews and Q&amp;As</p>

### Properties

<b>Form</b>	Liquid
<b>Storage instructions</b>	Shipped at 4°C. Store at +4°C short term (1-2 weeks). Upon delivery aliquot. Store at -20°C long term. Avoid freeze / thaw cycle.
<b>Storage buffer</b>	pH: 7.30 Preservative: 0.02% Sodium azide Constituents: PBS, 50% Glycerol (glycerin, glycerine)
<b>Purity</b>	Immunogen affinity purified
<b>Clonality</b>	Polyclonal
<b>Isotype</b>	IgG

## Applications

### The Abpromise guarantee

Our **Abpromise guarantee** covers the use of ab229708 in the following tested applications.

The application notes include recommended starting dilutions; optimal dilutions/concentrations should be determined by the end user.

Application	Abreviews	Notes
WB		1/1000 - 1/5000. Predicted molecular weight: 106 kDa.
IHC-P		1/20 - 1/200.

## Target

### Function

May provide the missing metabolic reaction required to link the mitochondria and the cytoplasm in the mammalian model of one-carbon folate metabolism in embryonic and transformed cells complementing thus the enzymatic activities of MTHFD2.

### Tissue specificity

Detected in most tissues, highest expression found in placenta, thymus and brain. Low expression is found in liver and skeletal muscle. Up-regulated in colon adenocarcinoma.

### Pathway

One-carbon metabolism; tetrahydrofolate interconversion.

### Sequence similarities

In the N-terminal section; belongs to the tetrahydrofolate dehydrogenase/cyclohydrolase family.  
In the C-terminal section; belongs to the formate--tetrahydrofolate ligase family.

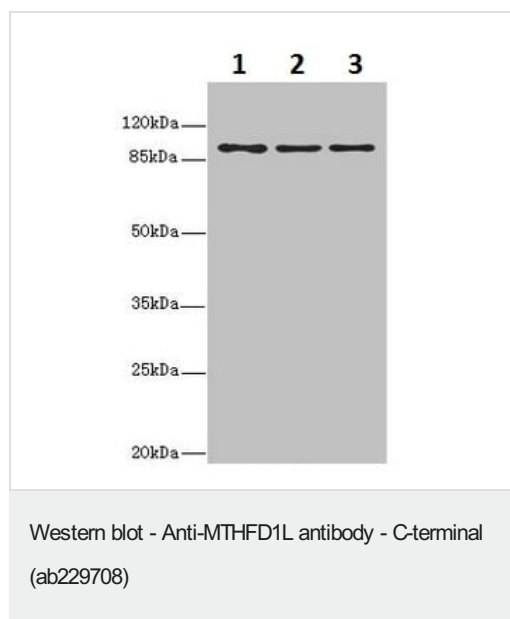
### Domain

This monofunctional enzyme consists of two major domains: an N-terminal inactive methylene-THF dehydrogenase and cyclohydrolase domain and an active larger formyl-THF synthetase C-terminal domain.

### Cellular localization

Mitochondrion.

## Images



**All lanes :** Anti-MTHFD1L antibody - C-terminal (ab229708) at 1/1000 dilution

**Lane 1 :** Colo3320 whole cell lysate

**Lane 2 :** HepG2 (human liver hepatocellular carcinoma cell line) whole cell lysate

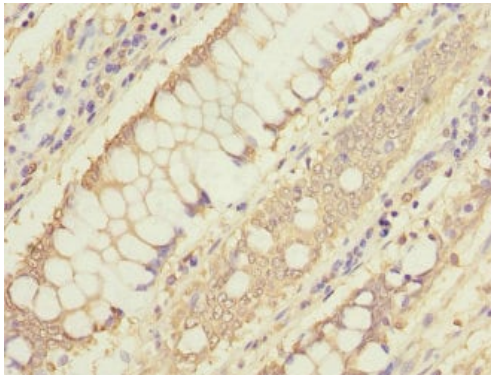
**Lane 3 :** HeLa (human epithelial cell line from cervix adenocarcinoma) whole cell lysate

### Secondary

**All lanes :** Goat anti-rabbit IgG at 1/10000 dilution

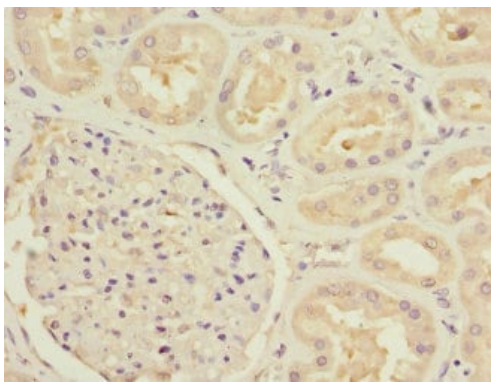
**Predicted band size:** 106 kDa

**Observed band size:** 106 kDa



Paraffin-embedded human colon cancer tissue stained for MTHFD1L using ab229708 at 1/100 dilution in immunohistochemical analysis.

Immunohistochemistry (Formalin/PFA-fixed paraffin-embedded sections) - Anti-MTHFD1L antibody - C-terminal (ab229708)



Paraffin-embedded human kidney tissue stained for MTHFD1L using ab229708 at 1/100 dilution in immunohistochemical analysis.

Immunohistochemistry (Formalin/PFA-fixed paraffin-embedded sections) - Anti-MTHFD1L antibody - C-terminal (ab229708)

**Please note:** All products are "FOR RESEARCH USE ONLY. NOT FOR USE IN DIAGNOSTIC PROCEDURES"

### Our Abpromise to you: Quality guaranteed and expert technical support

- Replacement or refund for products not performing as stated on the datasheet
- Valid for 12 months from date of delivery
- Response to your inquiry within 24 hours
- We provide support in Chinese, English, French, German, Japanese and Spanish
- Extensive multi-media technical resources to help you
- We investigate all quality concerns to ensure our products perform to the highest standards

If the product does not perform as described on this datasheet, we will offer a refund or replacement. For full details of the Abpromise, please visit <https://www.abcam.com/abpromise> or contact our technical team.

## Terms and conditions

---

- Guarantee only valid for products bought direct from Abcam or one of our authorized distributors