

Anti-MTHFR antibody ab236737

3 Images

Overview

| | |
|----------------------------|---|
| Product name | Anti-MTHFR antibody |
| Description | Rabbit polyclonal to MTHFR |
| Host species | Rabbit |
| Tested applications | Suitable for: IHC-P, WB, ICC/IF |
| Species reactivity | Reacts with: Human |
| Immunogen | Recombinant fragment corresponding to Human MTHFR aa 1-656. Database link: P42898 |
| Positive control | WB: HEK-293T whole cell lysate. IHC-P: Human prostate cancer tissue. ICC/IF: HeLa cells. |
| General notes | <p>The Life Science industry has been in the grips of a reproducibility crisis for a number of years. Abcam is leading the way in addressing this with our range of recombinant monoclonal antibodies and knockout edited cell lines for gold-standard validation. Please check that this product meets your needs before purchasing.</p> <p>If you have any questions, special requirements or concerns, please send us an inquiry and/or contact our Support team ahead of purchase. Recommended alternatives for this product can be found below, along with publications, customer reviews and Q&As</p> |

Properties

| | |
|-----------------------------|---|
| Form | Liquid |
| Storage instructions | Shipped at 4°C. Store at +4°C short term (1-2 weeks). Upon delivery aliquot. Store at -20°C long term. Avoid freeze / thaw cycle. |
| Storage buffer | pH: 7.40 Preservative: 0.03% Proclin 300 Constituents: 50% Glycerol (glycerin, glycerine), PBS |
| Purity | Protein G purified |
| Purification notes | Purity >95% |
| Clonality | Polyclonal |
| Isotype | IgG |

Applications

The Abpromise guarantee

Our **Abpromise guarantee** covers the use of ab236737 in the following tested applications.

The application notes include recommended starting dilutions; optimal dilutions/concentrations should be determined by the end user.

| Application | Abreviews | Notes |
|-------------|-----------|---|
| IHC-P | | 1/20 - 1/200. |
| WB | | 1/500 - 1/2000. Predicted molecular weight: 75 kDa. |
| ICC/IF | | 1/50 - 1/200. |

Target

Function

Catalyzes the conversion of 5,10-methylenetetrahydrofolate to 5-methyltetrahydrofolate, a co-substrate for homocysteine remethylation to methionine.

Pathway

One-carbon metabolism; tetrahydrofolate interconversion.

Involvement in disease

Defects in MTHFR are the cause of methylenetetrahydrofolate reductase deficiency (MTHFRD) [MIM:236250]. MTHFRD is autosomal recessive disorder with a wide range of features including homocysteinuria, homocysteinemia [MIM:603174], developmental delay, severe mental retardation, perinatal death, psychiatric disturbances, and later-onset neurodegenerative disorders.

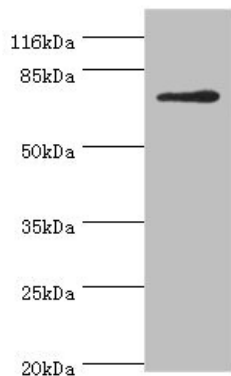
Defects in MTHFR may be a cause of susceptibility to ischemic stroke (ISCHSTR) [MIM:601367]; also known as cerebrovascular accident or cerebral infarction. A stroke is an acute neurologic event leading to death of neural tissue of the brain and resulting in loss of motor, sensory and/or cognitive function. Ischemic strokes, resulting from vascular occlusion, is considered to be a highly complex disease consisting of a group of heterogeneous disorders with multiple genetic and environmental risk factors.

Defects in MTHFR may be a cause of susceptibility to folate-sensitive neural tube defects (folate-sensitive NTD) [MIM:601634]. The most common NTDs are open spina bifida (myelomeningocele) and anencephaly.

Sequence similarities

Belongs to the methylenetetrahydrofolate reductase family.

Images



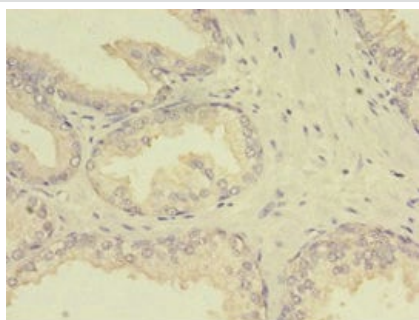
Western blot - Anti-MTHFR antibody (ab236737)

Anti-MTHFR antibody (ab236737) at 1/500 dilution + HEK-293T (Human epithelial cell line from embryonic kidney transformed with large T antigen) whole cell lysate

Secondary

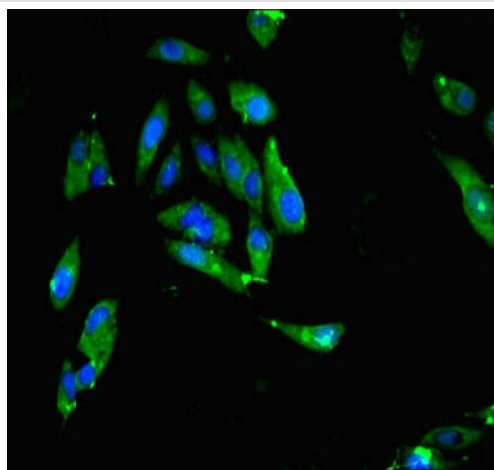
Goat polyclonal to rabbit IgG at 1/10000 dilution

Predicted band size: 75 kDa



Immunohistochemistry (Formalin/PFA-fixed paraffin-embedded sections) - Anti-MTHFR antibody (ab236737)

Paraffin-embedded human prostate cancer tissue stained for MTHFR using ab236737 at 1/100 dilution in immunohistochemical analysis.



Immunocytochemistry/ Immunofluorescence - Anti-MTHFR antibody (ab236737)

HeLa (Human epithelial cell line from cervix adenocarcinoma) cells stained for MTHFR (green) using ab236737 at 1/100 dilution in ICC/IF. Secondary antibody is an Alexa-Fluor® 488-conjugated Goat Anti-Rabbit IgG (H+L).

Please note: All products are "FOR RESEARCH USE ONLY. NOT FOR USE IN DIAGNOSTIC PROCEDURES"

Our Abpromise to you: Quality guaranteed and expert technical support

-
- Replacement or refund for products not performing as stated on the datasheet
 - Valid for 12 months from date of delivery
 - Response to your inquiry within 24 hours

 - We provide support in Chinese, English, French, German, Japanese and Spanish
 - Extensive multi-media technical resources to help you
 - We investigate all quality concerns to ensure our products perform to the highest standards

If the product does not perform as described on this datasheet, we will offer a refund or replacement. For full details of the Abpromise, please visit <https://www.abcam.com/abpromise> or contact our technical team.

Terms and conditions

- Guarantee only valid for products bought direct from Abcam or one of our authorized distributors