


## Product datasheet

### Anti-MTP18 antibody ab198217

★★★★★ [2 Abreviews](#) [5 References](#) [2 Images](#)

#### Overview

<b>Product name</b>	Anti-MTP18 antibody
<b>Description</b>	Rabbit polyclonal to MTP18
<b>Host species</b>	Rabbit
<b>Tested applications</b>	<b>Suitable for:</b> IHC-P, WB
<b>Species reactivity</b>	<b>Reacts with:</b> Mouse, Human <b>Predicted to work with:</b> Rat 
<b>Immunogen</b>	Recombinant fragment (GST-tag) corresponding to Human MTP18 (internal sequence). BC046132 Database link: <a href="#">Q9UDX5</a>
<b>Positive control</b>	Mouse heart, muscle, liver and kidney tissue lysates; HeLa and HepG2 whole cell lysate ( <a href="#">ab7900</a> ); Human cervical cancer tissue
<b>General notes</b>	<p>The Life Science industry has been in the grips of a reproducibility crisis for a number of years. Abcam is leading the way in addressing this with our range of recombinant monoclonal antibodies and knockout edited cell lines for gold-standard validation. Please check that this product meets your needs before purchasing.</p> <p>If you have any questions, special requirements or concerns, please send us an inquiry and/or contact our Support team ahead of purchase. Recommended alternatives for this product can be found below, along with publications, customer reviews and Q&amp;As</p>

#### Properties

<b>Form</b>	Liquid
<b>Storage instructions</b>	Shipped at 4°C. Store at +4°C short term (1-2 weeks). Upon delivery aliquot. Store at -20°C long term. Avoid freeze / thaw cycle.
<b>Storage buffer</b>	pH: 7.4 Preservative: 0.05% Sodium azide Constituents: 49% PBS, 50% Glycerol (glycerin, glycerine)
<b>Purity</b>	Immunogen affinity purified
<b>Clonality</b>	Polyclonal
<b>Isotype</b>	IgG

## Applications

### The Abpromise guarantee

Our **Abpromise guarantee** covers the use of ab198217 in the following tested applications.

The application notes include recommended starting dilutions; optimal dilutions/concentrations should be determined by the end user.

Application	Abreviews	Notes
IHC-P		1/50 - 1/200.
WB	★★★★★ (1)	1/500 - 1/2000. Predicted molecular weight: 18 kDa.

## Target

### Function

Involved in the mitochondrial division probably by regulating membrane fission. Loss-of-function induces the release of cytochrome c, which activates the caspase cascade and leads to apoptosis.

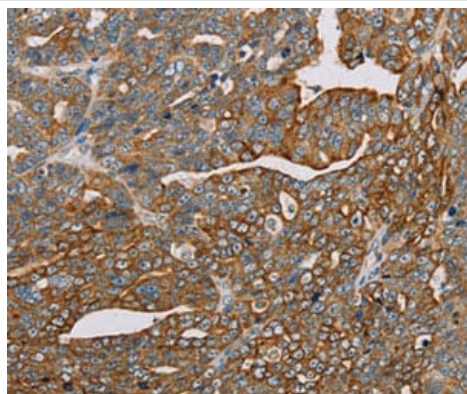
### Sequence similarities

Belongs to the MTFP1 family.

### Cellular localization

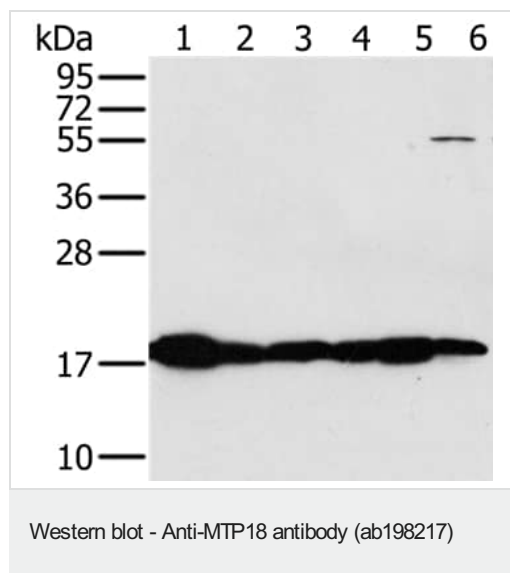
Mitochondrion inner membrane.

## Images



Immunohistochemical analysis of paraffin-embedded Human cervical cancer tissue labeling MTP18 with ab198217 at 1/30 dilution.

Immunohistochemistry (Formalin/PFA-fixed paraffin-embedded sections) - Anti-MTP18 antibody (ab198217)



**All lanes :** Anti-MTP18 antibody (ab198217) at 1/450 dilution

**Lane 1 :** Mouse heart tissue lysate

**Lane 2 :** Mouse muscle tissue lysate

**Lane 3 :** HeLa cell lysate

**Lane 4 :** Mouse liver tissue lysate

**Lane 5 :** Mouse kidney tissue lysate

**Lane 6 :** HepG2 cell lysate

Lysates/proteins at 40 µg per lane.

**Predicted band size:** 18 kDa

**Exposure time:** 5 seconds

10% SDS-PAGE.

**Please note:** All products are "FOR RESEARCH USE ONLY. NOT FOR USE IN DIAGNOSTIC PROCEDURES"

### Our Abpromise to you: Quality guaranteed and expert technical support

- Replacement or refund for products not performing as stated on the datasheet
- Valid for 12 months from date of delivery
- Response to your inquiry within 24 hours
- We provide support in Chinese, English, French, German, Japanese and Spanish
- Extensive multi-media technical resources to help you
- We investigate all quality concerns to ensure our products perform to the highest standards

If the product does not perform as described on this datasheet, we will offer a refund or replacement. For full details of the Abpromise, please visit <https://www.abcam.com/abpromise> or contact our technical team.

### Terms and conditions

- Guarantee only valid for products bought direct from Abcam or one of our authorized distributors