


## Product datasheet

# Anti-mtTFA antibody ab138351

[8 References](#) [1 Image](#)

### Overview

<b>Product name</b>	Anti-mtTFA antibody
<b>Description</b>	Rabbit polyclonal to mtTFA
<b>Host species</b>	Rabbit
<b>Tested applications</b>	<b>Suitable for:</b> WB
<b>Species reactivity</b>	<b>Reacts with:</b> Mouse, Rat, Human <b>Predicted to work with:</b> Chinese hamster 
<b>Immunogen</b>	Synthetic peptide corresponding to Mouse mtTFA aa 50-150 conjugated to keyhole limpet haemocyanin. Database link: <a href="#">P40630</a>
<b>Positive control</b>	This antibody gave a positive signal in the following whole cell lysates: HeLa; A431; Jurkat; MCF7; HepG2; Caco2; NIH3T3; PC12.
<b>General notes</b>	<p>The Life Science industry has been in the grips of a reproducibility crisis for a number of years. Abcam is leading the way in addressing this with our range of recombinant monoclonal antibodies and knockout edited cell lines for gold-standard validation. Please check that this product meets your needs before purchasing.</p> <p>If you have any questions, special requirements or concerns, please send us an inquiry and/or contact our Support team ahead of purchase. Recommended alternatives for this product can be found below, along with publications, customer reviews and Q&amp;As</p>

### Properties

<b>Form</b>	Liquid
<b>Storage instructions</b>	Shipped at 4°C. Store at +4°C short term (1-2 weeks). Upon delivery aliquot. Store at -20°C or -80°C. Avoid freeze / thaw cycle.
<b>Storage buffer</b>	pH: 7.40 Preservative: 0.02% Sodium azide Constituent: PBS

Batches of this product that have a concentration < 1mg/ml may have BSA added as a stabilising agent. If you would like information about the formulation of a specific lot, please contact our scientific support team who will be happy to help.

<b>Purity</b>	Immunogen affinity purified
<b>Clonality</b>	Polyclonal
<b>Isotype</b>	IgG

## Applications

**The Abpromise guarantee** Our **Abpromise guarantee** covers the use of ab138351 in the following tested applications. The application notes include recommended starting dilutions; optimal dilutions/concentrations should be determined by the end user.

Application	Abreviews	Notes
<b>WB</b>		Use a concentration of 1 µg/ml. Detects a band of approximately 29 kDa (predicted molecular weight: 29 kDa).

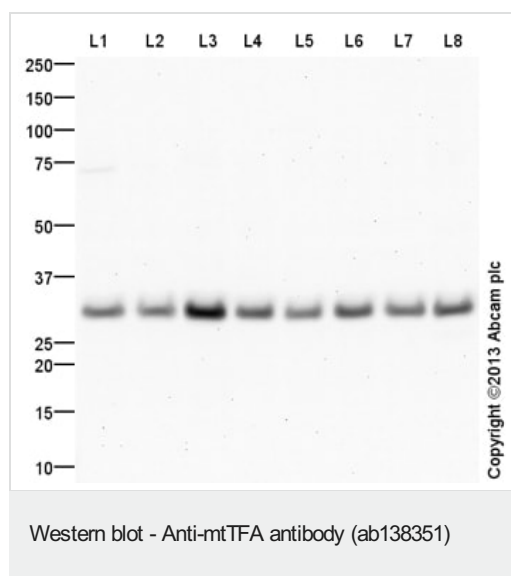
## Target

**Function** Binds to the mitochondrial light strand promoter and functions in mitochondrial transcription regulation. Required for accurate and efficient promoter recognition by the mitochondrial RNA polymerase. Promotes transcription initiation from the HSP1 and the light strand promoter by binding immediately upstream of transcriptional start sites. Is able to unwind and bend DNA. Required for maintenance of normal levels of mitochondrial DNA. May play a role in organizing and compacting mitochondrial DNA. target DNA. Interacts with TFB1M and TFB2M.

**Sequence similarities** Contains 2 HMG box DNA-binding domains.

**Cellular localization** Mitochondrion.

## Images



**All lanes :** Anti-mtTFA antibody (ab138351) at 1 µg/ml (Milk blocking 1%)

**Lane 1 :** HeLa (Human epithelial carcinoma cell line) Whole Cell Lysate

**Lane 2 :** A431 (Human epithelial carcinoma cell line) Whole Cell Lysate

**Lane 3 :** Jurkat (Human T cell lymphoblast-like cell line) Whole Cell Lysate

**Lane 4 :** MCF7 (Human breast adenocarcinoma cell line) Whole Cell Lysate

**Lane 5 :** HepG2 (Human hepatocellular liver carcinoma cell line) Whole Cell Lysate

**Lane 6 :** Caco 2 (Human colonic carcinoma cell line) Whole Cell Lysate

**Lane 7 :** NIH 3T3 (Mouse embryonic fibroblast cell line) Whole Cell Lysate

**Lane 8 :** PC12 (Rat adrenal pheochromocytoma cell line) Whole Cell Lysate

Lysates/proteins at 20 µg per lane.

**Secondary**

**All lanes :** Goat Anti-Rabbit IgG H&L (HRP) (**ab97051**) at 1/10000 dilution

Developed using the ECL technique.

Performed under reducing conditions.

**Predicted band size:** 29 kDa

**Observed band size:** 29 kDa

**Exposure time:** 4 minutes

This blot was produced using a 10% Bis-tris gel under the MES buffer system. The gel was run at 200V for 35 minutes before being transferred onto a Nitrocellulose membrane at 30V for 70 minutes. The membrane was then blocked for an hour using 1% Milk before being incubated with ab138351 overnight at 4°C. Antibody binding was detected using an anti-rabbit antibody conjugated to HRP, and visualised using ECL development solution.

**Please note:** All products are "FOR RESEARCH USE ONLY. NOT FOR USE IN DIAGNOSTIC PROCEDURES"

### Our Abpromise to you: Quality guaranteed and expert technical support

---

- Replacement or refund for products not performing as stated on the datasheet
- Valid for 12 months from date of delivery
- Response to your inquiry within 24 hours
- We provide support in Chinese, English, French, German, Japanese and Spanish
- Extensive multi-media technical resources to help you
- We investigate all quality concerns to ensure our products perform to the highest standards

If the product does not perform as described on this datasheet, we will offer a refund or replacement. For full details of the Abpromise, please visit <https://www.abcam.com/abpromise> or contact our technical team.

### Terms and conditions

---

- Guarantee only valid for products bought direct from Abcam or one of our authorized distributors