

Product datasheet

Anti-mtTFA antibody [EPR12286] ab171951

Recombinant RabMAb

★★★★★ [1 Abreviews](#) [5 Images](#)

Overview

Product name	Anti-mtTFA antibody [EPR12286]
Description	Rabbit monoclonal [EPR12286] to mtTFA
Host species	Rabbit
Tested applications	Suitable for: WB, IHC-P Unsuitable for: Flow Cyt, ICC/IF or IP
Species reactivity	Reacts with: Human Does not react with: Mouse, Rat
Immunogen	Synthetic peptide. This information is proprietary to Abcam and/or its suppliers.
Positive control	A431, HeLa, MCF-7, K562 and 293T cell lysates. Paraffin-embedded human ovarian carcinoma tissue and human testis tissue
General notes	<p>This product is a recombinant monoclonal antibody, which offers several advantages including:</p> <ul style="list-style-type: none">- High batch-to-batch consistency and reproducibility- Improved sensitivity and specificity- Long-term security of supply- Animal-free production <p>For more information see here.</p> <p>Our RabMAb[®] technology is a patented hybridoma-based technology for making rabbit monoclonal antibodies. For details on our patents, please refer to RabMAb[®] patents.</p>

Properties

Form	Liquid
Storage instructions	Shipped at 4°C. Store at +4°C short term (1-2 weeks). Upon delivery aliquot. Store at -20°C long term. Avoid freeze / thaw cycle.
Storage buffer	pH: 7.20 Preservative: 0.01% Sodium azide Constituents: 9% PBS, 40% Glycerol (glycerin, glycerine), 0.05% BSA, 50% Tissue culture supernatant
Purity	Tissue culture supernatant
Clonality	Monoclonal

Clone number EPR12286
Isotype IgG

Applications

The Abpromise guarantee Our **Abpromise guarantee** covers the use of ab171951 in the following tested applications. The application notes include recommended starting dilutions; optimal dilutions/concentrations should be determined by the end user.

Application	Abreviews	Notes
WB		1/1000 - 1/5000. Predicted molecular weight: 29 kDa.
IHC-P	★★★★★ (1)	1/100 - 1/250. Perform heat mediated antigen retrieval with citrate buffer pH 6 before commencing with IHC staining protocol.

Application notes Is unsuitable for Flow Cyt, ICC/IF or IP.

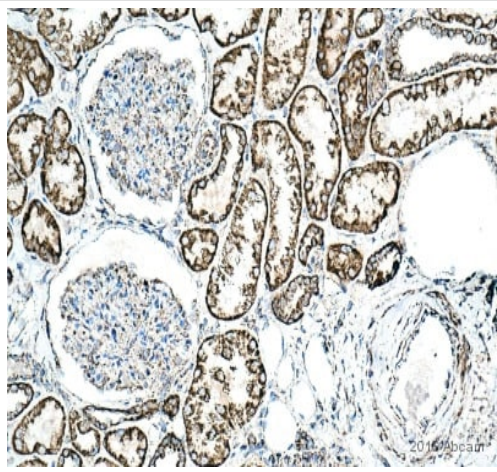
Target

Function Binds to the mitochondrial light strand promoter and functions in mitochondrial transcription regulation. Required for accurate and efficient promoter recognition by the mitochondrial RNA polymerase. Promotes transcription initiation from the HSP1 and the light strand promoter by binding immediately upstream of transcriptional start sites. Is able to unwind and bend DNA. Required for maintenance of normal levels of mitochondrial DNA. May play a role in organizing and compacting mitochondrial DNA. target DNA. Interacts with TFB1M and TFB2M.

Sequence similarities Contains 2 HMG box DNA-binding domains.

Cellular localization Mitochondrion.

Images

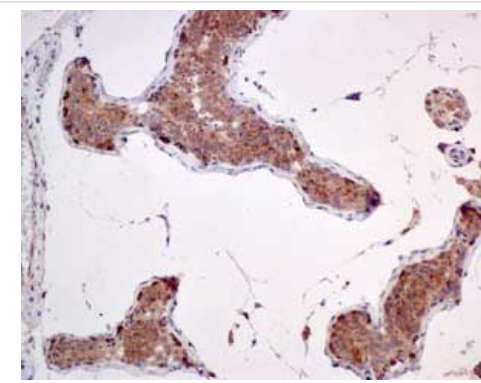


Immunohistochemistry (Formalin/PFA-fixed paraffin-embedded sections) - Anti-mtTFA antibody

[EPR12286] (ab171951)

This image is courtesy of an Abreview submitted by Carl Hobbs

ab171951 staining mtTFA in human kidney tissue sections by Immunohistochemistry (IHC-P - paraformaldehyde-fixed, paraffin-embedded sections). Tissue was fixed with formaldehyde and blocked with 2% BSA for 10 minutes at 21°C; antigen retrieval was by heat mediation in a citric acid. Samples were incubated with primary antibody (1/200 in TBS/BSA/azide) for 16 hours at 21°C. A Biotin-conjugated goat anti-rabbit IgG polyclonal (1/300) was used as the secondary antibody.

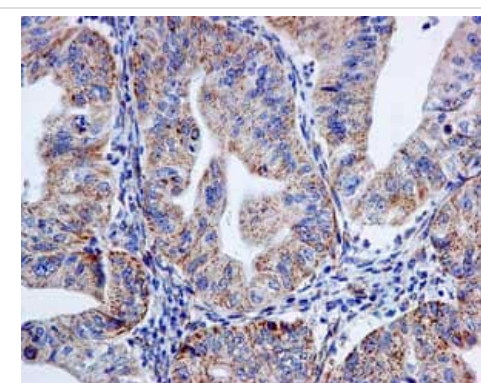


Immunohistochemistry (Formalin/PFA-fixed paraffin-embedded sections) - Anti-mtTFA antibody

[EPR12286] (ab171951)

Immunohistochemical analysis of paraffin-embedded Human testis tissue labeling mtTFA with ab171951 at 1/100 dilution.

Perform heat mediated antigen retrieval with citrate buffer pH 6 before commencing with IHC staining protocol.

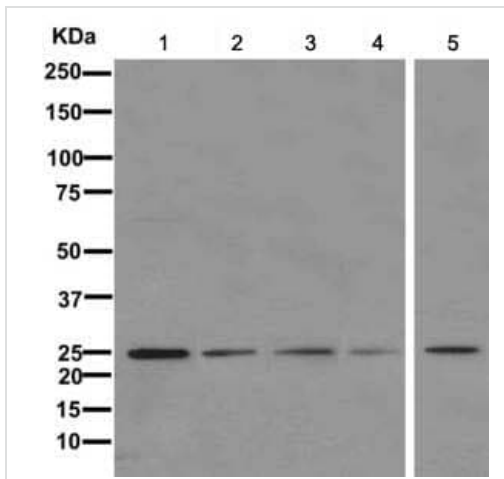


Immunohistochemistry (Formalin/PFA-fixed paraffin-embedded sections) - Anti-mtTFA antibody

[EPR12286] (ab171951)

Immunohistochemical analysis of paraffin-embedded Human ovarian carcinoma tissue labeling mtTFA with ab171951 at 1/100 dilution.

Perform heat mediated antigen retrieval with citrate buffer pH 6 before commencing with IHC staining protocol.



All lanes : Anti-mtTFA antibody [EPR12286] (ab171951)

Lane 1 : A431 cell lysate

Lane 2 : HeLa cell lysate

Lane 3 : MCF7 cell lysate

Lane 4 : K562 cell lysate





Lane 5 : 293T cell lysate

Lysates/proteins at 10 µg per lane.

Predicted band size: 29 kDa

Western blot - Anti-mtTFA antibody [EPR12286]
(ab171951)

Why choose a recombinant antibody?

 <p>Research with confidence Consistent and reproducible results</p>	 <p>Long-term and scalable supply Recombinant technology</p>
 <p>Success from the first experiment Confirmed specificity</p>	 <p>Ethical standards compliant Animal-free production</p>

Anti-mtTFA antibody [EPR12286] (ab171951)

Please note: All products are "FOR RESEARCH USE ONLY. NOT FOR USE IN DIAGNOSTIC PROCEDURES"

Our Abpromise to you: Quality guaranteed and expert technical support

- Replacement or refund for products not performing as stated on the datasheet
- Valid for 12 months from date of delivery
- Response to your inquiry within 24 hours
- We provide support in Chinese, English, French, German, Japanese and Spanish
- Extensive multi-media technical resources to help you
- We investigate all quality concerns to ensure our products perform to the highest standards

If the product does not perform as described on this datasheet, we will offer a refund or replacement. For full details of the Abpromise, please visit <https://www.abcam.com/abpromise> or contact our technical team.

Terms and conditions

- Guarantee only valid for products bought direct from Abcam or one of our authorized distributors