

## Product datasheet

# Anti-mtTFA antibody - Mitochondrial Marker ab131607

★★★★★ [7 Abreviews](#) [136 References](#) [2 Images](#)

### Overview

<b>Product name</b>	Anti-mtTFA antibody - Mitochondrial Marker
<b>Description</b>	Rabbit polyclonal to mtTFA - Mitochondrial Marker
<b>Host species</b>	Rabbit
<b>Tested applications</b>	<b>Suitable for:</b> WB
<b>Species reactivity</b>	<b>Reacts with:</b> Rat
<b>Immunogen</b>	Recombinant full length protein (His-tag) corresponding to Mouse mtTFA. Native recombinant mouse mtTFA protein with a C-terminal 6-His tag.
<b>Positive control</b>	Rat kidney lysate.
<b>General notes</b>	<p>The Life Science industry has been in the grips of a reproducibility crisis for a number of years. Abcam is leading the way in addressing this with our range of recombinant monoclonal antibodies and knockout edited cell lines for gold-standard validation. Please check that this product meets your needs before purchasing.</p> <p>If you have any questions, special requirements or concerns, please send us an inquiry and/or contact our Support team ahead of purchase. Recommended alternatives for this product can be found below, along with publications, customer reviews and Q&amp;As</p>

### Properties

<b>Form</b>	Liquid
<b>Storage instructions</b>	Shipped at 4°C. Upon delivery aliquot and store at -20°C. Avoid freeze / thaw cycles.
<b>Purity</b>	Whole antiserum
<b>Clonality</b>	Polyclonal
<b>Isotype</b>	IgG

### Applications

**The Abpromise guarantee** Our **Abpromise guarantee** covers the use of ab131607 in the following tested applications. The application notes include recommended starting dilutions; optimal dilutions/concentrations should be determined by the end user.

Application	Abreviews	Notes
WB	★★★★☆ (5)	1/2000. Predicted molecular weight: 28 kDa.

## Target

### Function

Binds to the mitochondrial light strand promoter and functions in mitochondrial transcription regulation. Required for accurate and efficient promoter recognition by the mitochondrial RNA polymerase. Promotes transcription initiation from the HSP1 and the light strand promoter by binding immediately upstream of transcriptional start sites. Is able to unwind and bend DNA. Required for maintenance of normal levels of mitochondrial DNA. May play a role in organizing and compacting mitochondrial DNA. target DNA. Interacts with TFB1M and TFB2M.

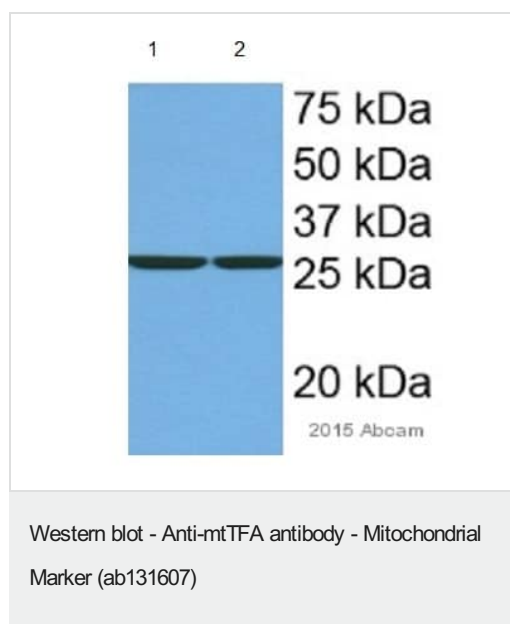
### Sequence similarities

Contains 2 HMG box DNA-binding domains.

### Cellular localization

Mitochondrion.

## Images



**All lanes :** Anti-mtTFA antibody - Mitochondrial Marker (ab131607) at 1/2000 dilution

**Lane 1 :** Mouse liver whole tissue lysate

**Lane 2 :** Mouse hepatocytes whole cell lysate

Lysates/proteins at 25 µg per lane.

### Secondary

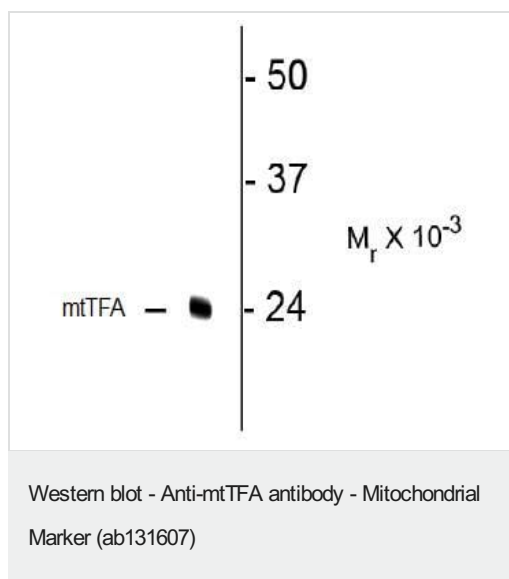
**All lanes :** HRP-conjugated goat anti-rabbit IgG at 1/20000 dilution

Developed using the ECL technique.

Performed under reducing conditions.

**Predicted band size:** 28 kDa

**Exposure time:** 10 seconds



Anti-mtTFA antibody - Mitochondrial Marker (ab131607) at 1/2000 dilution + Rat kidney lysate

**Predicted band size:** 28 kDa

**Please note:** All products are "FOR RESEARCH USE ONLY. NOT FOR USE IN DIAGNOSTIC PROCEDURES"

#### Our Abpromise to you: Quality guaranteed and expert technical support

---

- Replacement or refund for products not performing as stated on the datasheet
- Valid for 12 months from date of delivery
- Response to your inquiry within 24 hours
- We provide support in Chinese, English, French, German, Japanese and Spanish
- Extensive multi-media technical resources to help you
- We investigate all quality concerns to ensure our products perform to the highest standards

If the product does not perform as described on this datasheet, we will offer a refund or replacement. For full details of the Abpromise, please visit <https://www.abcam.com/abpromise> or contact our technical team.

#### Terms and conditions

---

- Guarantee only valid for products bought direct from Abcam or one of our authorized distributors