

Anti-Mucin 5AC antibody [1-13M1] ab24070

[17 References](#) [1 Image](#)

Overview

Product name	Anti-Mucin 5AC antibody [1-13M1]
Description	Mouse monoclonal [1-13M1] to Mucin 5AC
Host species	Mouse
Tested applications	Suitable for: Flow Cyt
Species reactivity	Reacts with: Human
Immunogen	Full length native protein (purified) corresponding to Human Mucin 5AC. Mucin isolated from an ovarian cyst fluid (pure endocervical type according to the Fenoglio's classification) from an ALeb patient
Epitope	The epitope is destroyed by beta-mercaptoethanol.
Positive control	Human intestine and stomach
General notes	<p>The Life Science industry has been in the grips of a reproducibility crisis for a number of years. Abcam is leading the way in addressing this with our range of recombinant monoclonal antibodies and knockout edited cell lines for gold-standard validation. Please check that this product meets your needs before purchasing.</p> <p>If you have any questions, special requirements or concerns, please send us an inquiry and/or contact our Support team ahead of purchase. Recommended alternatives for this product can be found below, along with publications, customer reviews and Q&As</p>

Properties

Form	Liquid
Storage instructions	Shipped at 4°C. Upon delivery aliquot and store at -20°C or -80°C. Avoid repeated freeze / thaw cycles.
Storage buffer	<p>pH: 7.3</p> <p>Preservative: 0.05% Sodium azide</p> <p>Constituent: PBS</p>
Purity	Protein G purified
Clonality	Monoclonal
Clone number	1-13M1
Myeloma	Sp2/0

Applications

The Abpromise guarantee

Our **Abpromise guarantee** covers the use of ab24070 in the following tested applications.

The application notes include recommended starting dilutions; optimal dilutions/concentrations should be determined by the end user.

Application	Abreviews	Notes
Flow Cyt		Use 1 µg for 10 ⁶ cells. ab170190 - Mouse monoclonal IgG1, is suitable for use as an isotype control with this antibody.

Target

Function

Gel-forming glycoprotein of gastric and respiratory tract epithelia that protects the mucosa from infection and chemical damage by binding to inhaled microorganisms and particles that are subsequently removed by the mucociliary system.

Tissue specificity

Highly expressed in surface mucosal cells of respiratory tract and stomach epithelia. Overexpressed in a number of carcinomas. Also expressed in Barrett's esophagus epithelium and in the proximal duodenum.

Sequence similarities

Contains 1 CTCK (C-terminal cystine knot-like) domain.
Contains 3 TIL (trypsin inhibitory-like) domains.
Contains 4 VWFC domains.
Contains 4 VWFD domains.

Domain

The cysteine residues in the Cys-rich subdomain repeats are not involved in disulfide bonding.

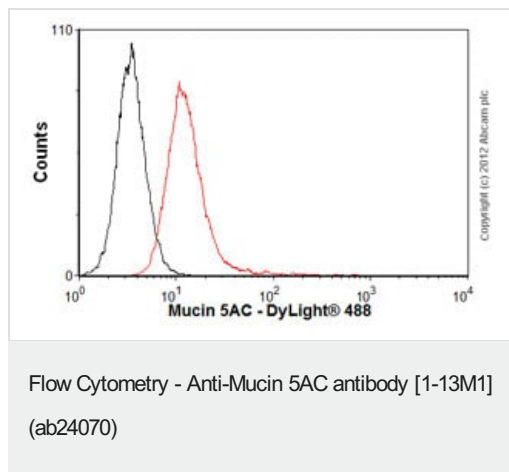
Post-translational modifications

C-, O- and N-glycosylated. O-glycosylated on the Thr-/Ser-rich tandem repeats. C-mannosylation in the Cys-rich subdomains may be required for proper folding of these regions and for export from the endoplasmic reticulum during biosynthesis.
Proteolytic cleavage in the C-terminal is initiated early in the secretory pathway and does not involve a serine protease. The extent of cleavage is increased in the acidic parts of the secretory pathway. Cleavage generates a reactive group which could link the protein to a primary amide.

Cellular localization

Secreted.

Images



Overlay histogram showing A549 cells stained with ab24070 (red line). The cells were fixed with 80% methanol (5 min) and then permeabilized with 0.1% PBS-Tween for 20 min. The cells were then incubated in 1x PBS / 10% normal goat serum / 0.3M glycine to block non-specific protein-protein interactions. The cells were then incubated with the antibody (ab24070, 1 µg/1x10⁶ cells) for 30 min at 22°C. The secondary antibody used was DyLight® 488 goat anti-mouse IgG (H+L) (**ab96879**) at 1/500 dilution for 30 min at 22°C. Isotype control antibody (black line) was mouse IgG1 [ICIGG1] (**ab91353**, 2 µg/1x10⁶ cells) used under the same conditions. Acquisition of >5,000 events was performed.

Please note: All products are "FOR RESEARCH USE ONLY. NOT FOR USE IN DIAGNOSTIC PROCEDURES"

Our Abpromise to you: Quality guaranteed and expert technical support

- Replacement or refund for products not performing as stated on the datasheet
- Valid for 12 months from date of delivery
- Response to your inquiry within 24 hours
- We provide support in Chinese, English, French, German, Japanese and Spanish
- Extensive multi-media technical resources to help you
- We investigate all quality concerns to ensure our products perform to the highest standards

If the product does not perform as described on this datasheet, we will offer a refund or replacement. For full details of the Abpromise, please visit <https://www.abcam.com/abpromise> or contact our technical team.

Terms and conditions

- Guarantee only valid for products bought direct from Abcam or one of our authorized distributors