


Product datasheet

Anti-Musashi 1 / Msi1 antibody ab218189

[2 Images](#)

Overview

Product name	Anti-Musashi 1 / Msi1 antibody
Description	Rabbit polyclonal to Musashi 1 / Msi1
Host species	Rabbit
Tested applications	Suitable for: IHC-P
Species reactivity	Reacts with: Mouse Predicted to work with: Rat, Human 
Immunogen	Synthetic peptide within Human Musashi 1/ Msi1 aa 60-110 conjugated to keyhole limpet haemocyanin. The exact sequence is proprietary. Database link: O43347
Positive control	IHC-P: Mouse brain and pancreas tissues.
General notes	<p>The Life Science industry has been in the grips of a reproducibility crisis for a number of years. Abcam is leading the way in addressing this with our range of recombinant monoclonal antibodies and knockout edited cell lines for gold-standard validation. Please check that this product meets your needs before purchasing.</p> <p>If you have any questions, special requirements or concerns, please send us an inquiry and/or contact our Support team ahead of purchase. Recommended alternatives for this product can be found below, along with publications, customer reviews and Q&As</p>

Properties

Form	Liquid
Storage instructions	Shipped at 4°C. Store at +4°C short term (1-2 weeks). Upon delivery aliquot. Store at -20°C. Avoid freeze / thaw cycle.
Storage buffer	pH: 7.40 Preservative: 0.02% Proclin 300 Constituents: 50% Glycerol (glycerin, glycerine), 1% BSA, 48.98% TBS, 1X
Purity	Protein A purified
Clonality	Polyclonal
Isotype	IgG

Applications

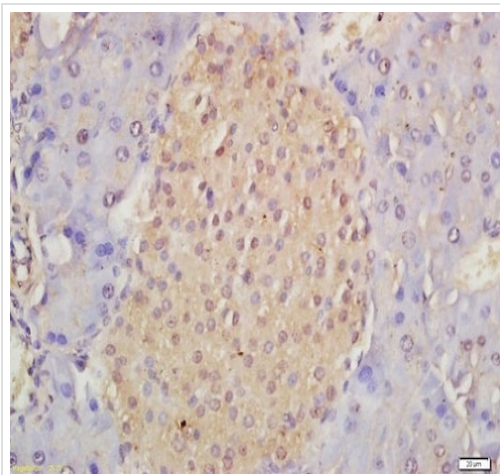
The Abpromise guarantee Our **Abpromise guarantee** covers the use of ab218189 in the following tested applications. The application notes include recommended starting dilutions; optimal dilutions/concentrations should be determined by the end user.

Application	Abreviews	Notes
IHC-P		1/100 - 1/500.

Target

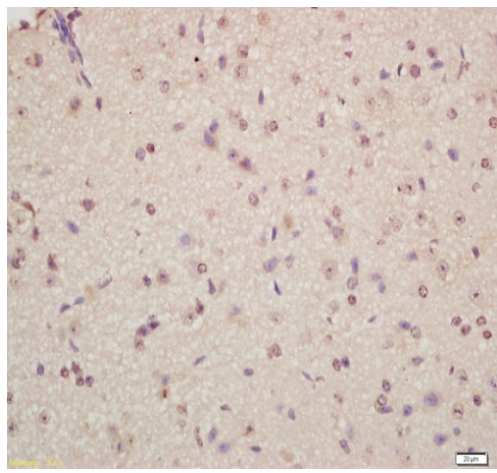
Function	RNA binding protein that regulates the expression of target mRNAs at the translation level. Regulates expression of the NOTCH1 antagonist NUMB. Binds RNA containing the sequence 5'-GUUAGUUAGUUAGUU-3' and other sequences containing the pattern 5'-[GA]U(1-3)AGU-3'. May play a role in the proliferation and maintenance of stem cells in the central nervous system.
Tissue specificity	Detected in fetal kidney, brain, liver and lung, and in adult brain and pancreas. Detected in hepatoma cell lines.
Sequence similarities	Belongs to the Musashi family. Contains 2 RRM (RNA recognition motif) domains.
Domain	The first RNA recognition motif binds more strongly to RNA compared to the second one.
Cellular localization	Cytoplasm. Nucleus.

Images



Formalin-fixed, paraffin-embedded mouse pancreas tissue stained for Musashi 1 / Msi1 using ab218189 at 1/200 dilution in immunohistochemical analysis, followed by conjugation to the secondary antibody and DAB staining.

Immunohistochemistry (Formalin/PFA-fixed paraffin-embedded sections) - Anti-Musashi 1 / Msi1 antibody (ab218189)



Immunohistochemistry (Formalin/PFA-fixed paraffin-embedded sections) - Anti-Musashi 1 / Msi1 antibody (ab218189)

Formalin-fixed, paraffin-embedded mouse brain tissue stained for Musashi 1 / Msi1 using ab218189 at 1/200 dilution in immunohistochemical analysis, followed by conjugation to the secondary antibody and DAB staining.

Please note: All products are "FOR RESEARCH USE ONLY. NOT FOR USE IN DIAGNOSTIC PROCEDURES"

Our Abpromise to you: Quality guaranteed and expert technical support

- Replacement or refund for products not performing as stated on the datasheet
- Valid for 12 months from date of delivery
- Response to your inquiry within 24 hours
- We provide support in Chinese, English, French, German, Japanese and Spanish
- Extensive multi-media technical resources to help you
- We investigate all quality concerns to ensure our products perform to the highest standards

If the product does not perform as described on this datasheet, we will offer a refund or replacement. For full details of the Abpromise, please visit <https://www.abcam.com/abpromise> or contact our technical team.

Terms and conditions

- Guarantee only valid for products bought direct from Abcam or one of our authorized distributors