

## Product datasheet

# Anti-Muscarinic Acetylcholine Receptor M5/CHRM5 antibody ab186830

[2 Images](#)

### Overview

<b>Product name</b>	Anti-Muscarinic Acetylcholine Receptor M5/CHRM5 antibody
<b>Description</b>	Rabbit polyclonal to Muscarinic Acetylcholine Receptor M5/CHRM5
<b>Host species</b>	Rabbit
<b>Tested applications</b>	<b>Suitable for:</b> ICC/IF, WB
<b>Species reactivity</b>	<b>Reacts with:</b> Mouse, Human
<b>Immunogen</b>	Recombinant fragment corresponding to Human Muscarinic Acetylcholine Receptor M5/CHRM5 aa 230-430 (internal sequence). Database link: <a href="#">P08912</a>
<b>General notes</b>	<p>The Life Science industry has been in the grips of a reproducibility crisis for a number of years. Abcam is leading the way in addressing this with our range of recombinant monoclonal antibodies and knockout edited cell lines for gold-standard validation. Please check that this product meets your needs before purchasing.</p> <p>If you have any questions, special requirements or concerns, please send us an inquiry and/or contact our Support team ahead of purchase. Recommended alternatives for this product can be found below, along with publications, customer reviews and Q&amp;As</p>

### Properties

<b>Form</b>	Liquid
<b>Storage instructions</b>	Shipped at 4°C. Store at +4°C short term (1-2 weeks). Upon delivery aliquot. Store at -20°C long term. Avoid freeze / thaw cycle.
<b>Storage buffer</b>	pH: 7.30 Preservative: 0.02% Sodium azide Constituents: 49% PBS, 50% Glycerol
<b>Purity</b>	Immunogen affinity purified
<b>Clonality</b>	Polyclonal
<b>Isotype</b>	IgG

### Applications

## The Abpromise guarantee

Our **Abpromise guarantee** covers the use of ab186830 in the following tested applications.

The application notes include recommended starting dilutions; optimal dilutions/concentrations should be determined by the end user.

Application	Abreviews	Notes
ICC/IF		Use at an assay dependent concentration.
WB		1/500 - 1/2000. Predicted molecular weight: 60 kDa.

## Target

### Function

The muscarinic acetylcholine receptor mediates various cellular responses, including inhibition of adenylate cyclase, breakdown of phosphoinositides and modulation of potassium channels through the action of G proteins. Primary transducing effect is Pi turnover.

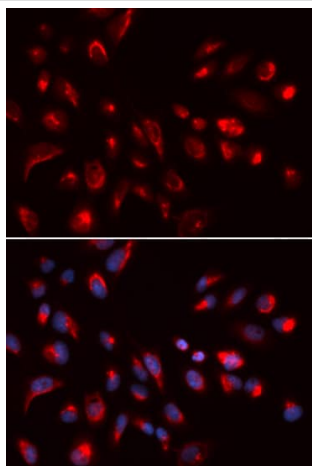
### Sequence similarities

Belongs to the G-protein coupled receptor 1 family. Muscarinic acetylcholine receptor subfamily. CHRM5 sub-subfamily.

### Cellular localization

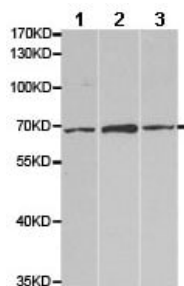
Cell membrane. Cell junction, synapse, postsynaptic cell membrane.

## Images



Immunocytochemistry/Immunofluorescence analysis of U2OS cells using ab186830. Blue DAPI for nuclear staining.

Immunocytochemistry/ Immunofluorescence - Anti-Muscarinic Acetylcholine Receptor M5/CHRM5 antibody (ab186830)



Western blot - Anti-Muscarinic Acetylcholine Receptor M5/CHRM5 antibody (ab186830)

**All lanes :** Anti-Muscarinic Acetylcholine Receptor M5/CHRM5 antibody (ab186830) at 1/500 dilution

**Lane 1 :** BT474 cell extract

**Lane 2 :** U251 cell extract

**Lane 3 :** Mouse liver extract

**Predicted band size:** 60 kDa

**Please note:** All products are "FOR RESEARCH USE ONLY. NOT FOR USE IN DIAGNOSTIC PROCEDURES"

### Our Abpromise to you: Quality guaranteed and expert technical support

- Replacement or refund for products not performing as stated on the datasheet
- Valid for 12 months from date of delivery
- Response to your inquiry within 24 hours
- We provide support in Chinese, English, French, German, Japanese and Spanish
- Extensive multi-media technical resources to help you
- We investigate all quality concerns to ensure our products perform to the highest standards

If the product does not perform as described on this datasheet, we will offer a refund or replacement. For full details of the Abpromise, please visit <https://www.abcam.com/abpromise> or contact our technical team.

### Terms and conditions

- Guarantee only valid for products bought direct from Abcam or one of our authorized distributors