


Product datasheet

Anti-Myelin expression factor 2 antibody [EPR10775(B)] ab176335

Recombinant RabMAb

[5 Images](#)

Overview

Product name	Anti-Myelin expression factor 2 antibody [EPR10775(B)]
Description	Rabbit monoclonal [EPR10775(B)] to Myelin expression factor 2
Host species	Rabbit
Tested applications	Suitable for: IHC-P, WB, ICC/IF Unsuitable for: Flow Cyt or IP
Species reactivity	Reacts with: Mouse, Human Predicted to work with: Rat 
Immunogen	Synthetic peptide. This information is proprietary to Abcam and/or its suppliers.
Positive control	SH-SY5Y, Jurkat, MCF-7, Raw 264.7, fetal brain and fetal liver lysates. Paraffin-embedded Human brain and Human testis tissue. SH-SY5Y cells.
General notes	<p>This product is a recombinant monoclonal antibody, which offers several advantages including:</p> <ul style="list-style-type: none">- High batch-to-batch consistency and reproducibility- Improved sensitivity and specificity- Long-term security of supply- Animal-free production <p>For more information see here.</p> <p>Our RabMAb[®] technology is a patented hybridoma-based technology for making rabbit monoclonal antibodies. For details on our patents, please refer to RabMAb[®] patents.</p>

Properties

Form	Liquid
Storage instructions	Shipped at 4°C. Store at +4°C short term (1-2 weeks). Upon delivery aliquot. Store at -20°C long term. Avoid freeze / thaw cycle.
Storage buffer	pH: 7.20 Preservative: 0.01% Sodium azide Constituents: 9% PBS, 40% Glycerol (glycerin, glycerine), 0.05% BSA, 50% Tissue culture supernatant

Purity	Protein A purified
Clonality	Monoclonal
Clone number	EPR10775(B)
Isotype	IgG

Applications

The Abpromise guarantee Our **Abpromise guarantee** covers the use of ab176335 in the following tested applications.

The application notes include recommended starting dilutions; optimal dilutions/concentrations should be determined by the end user.

Application	Abreviews	Notes
IHC-P		1/250 - 1/500. Perform heat mediated antigen retrieval with citrate buffer pH 6 before commencing with IHC staining protocol.
WB		1/1000 - 1/5000. Predicted molecular weight: 64 kDa.
ICC/IF		1/100 - 1/250.

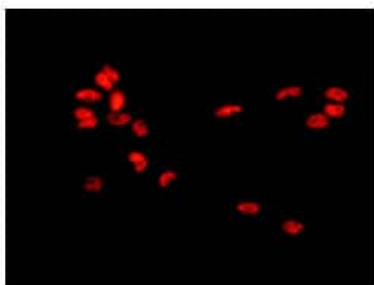
Application notes Is unsuitable for Flow Cyt or IP.

Target

Relevance Myelin expression factor 2 (MEF2) is expressed early in the differentiation program and is suppressed by specific polypeptide growth factors. The ability of MEF2 to recognize conserved activating elements associated with multiple specific genes suggests that this factor may participate in the coordinate regulation of genes during myogenesis.

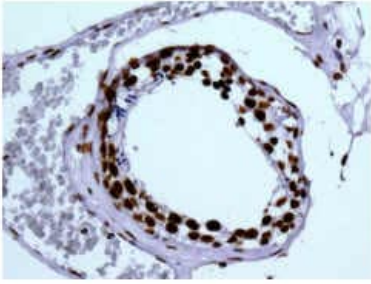
Cellular localization Nuclear

Images



Immunofluorescent analysis of SH-SY5Y cells labeling Myelin expression factor 2 with ab176335 at 1/100 dilution.

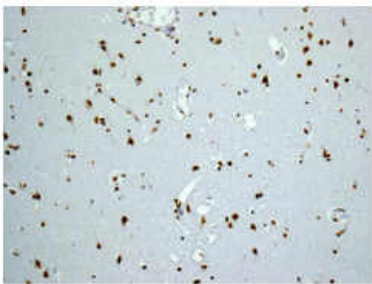
Immunocytochemistry/ Immunofluorescence - Anti-Myelin expression factor 2 antibody [EPR10775(B)] (ab176335)



Immunohistochemistry (Formalin/PFA-fixed paraffin-embedded sections) - Anti-Myelin expression factor 2 antibody [EPR10775(B)] (ab176335)

Immunohistochemical analysis of paraffin-embedded Human testis tissue labeling Myelin expression factor 2 with ab176335 at 1/250 dilution.

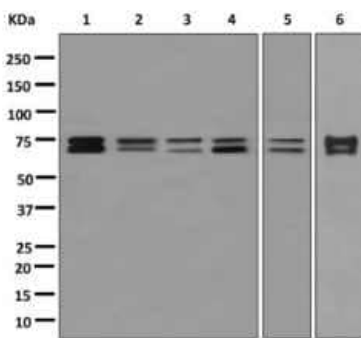
Perform heat mediated antigen retrieval with citrate buffer pH 6 before commencing with IHC staining protocol.



Immunohistochemistry (Formalin/PFA-fixed paraffin-embedded sections) - Anti-Myelin expression factor 2 antibody [EPR10775(B)] (ab176335)

Immunohistochemical analysis of paraffin-embedded Human brain tissue labeling Myelin expression factor 2 with ab176335 at 1/250 dilution.

Perform heat mediated antigen retrieval with citrate buffer pH 6 before commencing with IHC staining protocol.



Western blot - Anti-Myelin expression factor 2 antibody [EPR10775(B)] (ab176335)

All lanes : Anti-Myelin expression factor 2 antibody [EPR10775(B)] (ab176335) at 1/1000 dilution

Lane 1 : SH-SY5Y cell lysate

Lane 2 : Jurkat cell lysate

Lane 3 : MCF7 lysate

Lane 4 : fetal brain lysate

Lane 5 : fetal liver lysate

Lane 6 : Raw 264.7 lysate

Lysates/proteins at 10 µg per lane.

Predicted band size: 64 kDa

Why choose a recombinant antibody?



Research with confidence
Consistent and reproducible results



Long-term and scalable supply
Recombinant technology



Success from the first experiment
Confirmed specificity



Ethical standards compliant
Animal-free production

Anti-Myelin expression factor 2 antibody
[EPR10775(B)] (ab176335)

Please note: All products are "FOR RESEARCH USE ONLY. NOT FOR USE IN DIAGNOSTIC PROCEDURES"

Our Abpromise to you: Quality guaranteed and expert technical support

- Replacement or refund for products not performing as stated on the datasheet
- Valid for 12 months from date of delivery
- Response to your inquiry within 24 hours
- We provide support in Chinese, English, French, German, Japanese and Spanish
- Extensive multi-media technical resources to help you
- We investigate all quality concerns to ensure our products perform to the highest standards

If the product does not perform as described on this datasheet, we will offer a refund or replacement. For full details of the Abpromise, please visit <https://www.abcam.com/abpromise> or contact our technical team.

Terms and conditions

- Guarantee only valid for products bought direct from Abcam or one of our authorized distributors