

Product datasheet

Anti-Myelin oligodendrocyte glycoprotein antibody [EPR4282] α b108505

Recombinant RabMAb

★★★★★ [2 Abreviews](#) [2 Images](#)

Overview

Product name	Anti-Myelin oligodendrocyte glycoprotein antibody [EPR4282]
Description	Rabbit monoclonal [EPR4282] to Myelin oligodendrocyte glycoprotein
Host species	Rabbit
Tested applications	Suitable for: WB Unsuitable for: Flow Cyt, ICC/IF, IHC-P or IP
Species reactivity	Reacts with: Mouse, Rat, Human
Immunogen	Synthetic peptide. This information is proprietary to Abcam and/or its suppliers.
Positive control	Human, mouse and rat brain lysates.
General notes	This product is a recombinant monoclonal antibody, which offers several advantages including: <ul style="list-style-type: none"> - High batch-to-batch consistency and reproducibility - Improved sensitivity and specificity - Long-term security of supply - Animal-free production For more information see here . Our RabMAb [®] technology is a patented hybridoma-based technology for making rabbit monoclonal antibodies. For details on our patents, please refer to RabMAb[®] patents .

Properties

Form	Liquid
Storage instructions	Shipped at 4°C. Store at -20°C. Stable for 12 months at -20°C.
Storage buffer	pH: 7.20 Preservative: 0.05% Sodium azide Constituents: 0.1% BSA, 40% Glycerol (glycerin, glycerine), 9.85% Tris glycine, 50% Tissue culture supernatant
Purity	Tissue culture supernatant
Clonality	Monoclonal
Clone number	EPR4282

Isotype

IgG

Applications

The Abpromise guarantee

Our **Abpromise guarantee** covers the use of ab108505 in the following tested applications.

The application notes include recommended starting dilutions; optimal dilutions/concentrations should be determined by the end user.

Application	Abreviews	Notes
WB	★★★★★ (2)	1/1000 - 1/10000. Detects a band of approximately 28 kDa (predicted molecular weight: 28 kDa).

Application notes

Is unsuitable for Flow Cyt, ICC/IF, IHC-P or IP.

Target

Function

Mediates homophilic cell-cell adhesion (By similarity). Minor component of the myelin sheath. May be involved in completion and/or maintenance of the myelin sheath and in cell-cell communication.

Tissue specificity

Found exclusively in the CNS, where it is localized on the surface of myelin and oligodendrocyte cytoplasmic membranes.

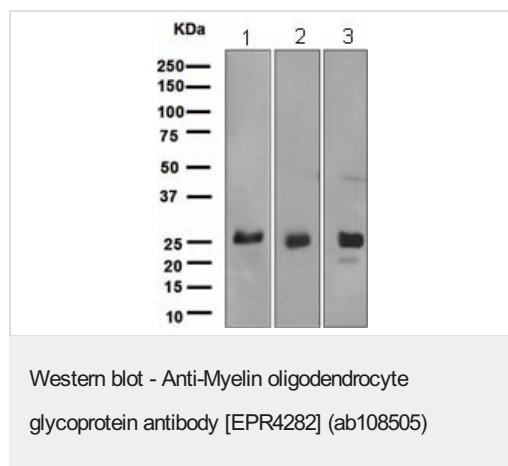
Sequence similarities

Belongs to the immunoglobulin superfamily. BTN/MOG family.
Contains 1 Ig-like V-type (immunoglobulin-like) domain.

Cellular localization

Cell membrane.

Images



All lanes : Anti-Myelin oligodendrocyte glycoprotein antibody [EPR4282] (ab108505) at 1/1000 dilution

Lane 1 : Human brain lysate

Lane 2 : Mouse brain lysate

Lane 3 : Rat brain lysate

Lysates/proteins at 10 µg per lane.

Predicted band size: 28 kDa

Observed band size: 28 kDa

Why choose a recombinant antibody?



Research with confidence
Consistent and reproducible results



Long-term and scalable supply
Recombinant technology



Success from the first experiment
Confirmed specificity



Ethical standards compliant
Animal-free production

Anti-Myelin oligodendrocyte glycoprotein antibody
[EPR4282] (ab108505)

Please note: All products are "FOR RESEARCH USE ONLY. NOT FOR USE IN DIAGNOSTIC PROCEDURES"

Our Abpromise to you: Quality guaranteed and expert technical support

- Replacement or refund for products not performing as stated on the datasheet
- Valid for 12 months from date of delivery
- Response to your inquiry within 24 hours
- We provide support in Chinese, English, French, German, Japanese and Spanish
- Extensive multi-media technical resources to help you
- We investigate all quality concerns to ensure our products perform to the highest standards

If the product does not perform as described on this datasheet, we will offer a refund or replacement. For full details of the Abpromise, please visit <https://www.abcam.com/abpromise> or contact our technical team.

Terms and conditions

- Guarantee only valid for products bought direct from Abcam or one of our authorized distributors