


## Product datasheet

# Anti-Myelin PLP antibody ab105784

★★★★★ [10 Abreviews](#) [14 References](#) [2 Images](#)

### Overview

---

<b>Product name</b>	Anti-Myelin PLP antibody
<b>Description</b>	Rabbit polyclonal to Myelin PLP
<b>Host species</b>	Rabbit
<b>Tested applications</b>	<b>Suitable for:</b> IHC-Fr, WB
<b>Species reactivity</b>	<b>Reacts with:</b> Mouse, Rat <b>Predicted to work with:</b> Rabbit, Goat, Chicken, Cow, Cat, Dog, Human, Pig, Xenopus laevis, Common marmoset, Orangutan 
<b>Immunogen</b>	Synthetic peptide corresponding to Rat Myelin PLP aa 1-100 conjugated to keyhole limpet haemocyanin. (Peptide available as <a href="#">ab124616</a> )
<b>General notes</b>	<p>The Life Science industry has been in the grips of a reproducibility crisis for a number of years. Abcam is leading the way in addressing this with our range of recombinant monoclonal antibodies and knockout edited cell lines for gold-standard validation. Please check that this product meets your needs before purchasing.</p> <p>If you have any questions, special requirements or concerns, please send us an inquiry and/or contact our Support team ahead of purchase. Recommended alternatives for this product can be found below, along with publications, customer reviews and Q&amp;As</p>

### Properties

---

<b>Form</b>	Liquid
<b>Storage instructions</b>	Shipped at 4°C. Store at +4°C short term (1-2 weeks). Upon delivery aliquot. Store at -20°C or -80°C. Avoid freeze / thaw cycle.
<b>Storage buffer</b>	pH: 7.40 Preservative: 0.02% Sodium azide Constituent: PBS
<b>Purity</b>	Immunogen affinity purified

Batches of this product that have a concentration < 1mg/ml may have BSA added as a stabilising agent. If you would like information about the formulation of a specific lot, please contact our scientific support team who will be happy to help.

<b>Clonality</b>	Polyclonal
<b>Isotype</b>	IgG

## Applications

**The Abpromise guarantee** Our **Abpromise guarantee** covers the use of ab105784 in the following tested applications.

The application notes include recommended starting dilutions; optimal dilutions/concentrations should be determined by the end user.

Application	Abreviews	Notes
IHC-Fr	★★★★★ (2)	Use at an assay dependent concentration.
WB		Use a concentration of 1 µg/ml. Detects a band of approximately 34 kDa (predicted molecular weight: 30 kDa).

## Target

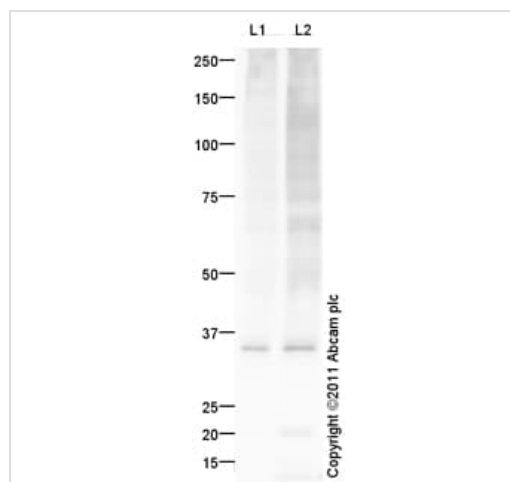
**Function** This is the major myelin protein from the central nervous system. It plays an important role in the formation or maintenance of the multilamellar structure of myelin.

**Involvement in disease** Defects in PLP1 are the cause of leukodystrophy hypomyelinating type 1 (HLD1) [MIM:312080]; also known as Pelizaeus-Merzbacher disease. HLD1 is an X-linked recessive dysmyelinating disorder of the central nervous system in which myelin is not formed properly. It is characterized clinically by nystagmus, spastic quadriplegia, ataxia, and developmental delay. Defects in PLP1 are the cause of spastic paraplegia X-linked type 2 (SPG2) [MIM:312920]. SPG2 is characterized by spastic gait and hyperreflexia. In some patients, complicating features include nystagmus, dysarthria, sensory disturbance, mental retardation, optic atrophy.

**Sequence similarities** Belongs to the myelin proteolipid protein family.

**Cellular localization** Membrane.

## Images



Western blot - Anti-Myelin PLP antibody (ab105784)

**All lanes** : Anti-Myelin PLP antibody (ab105784) at 1 µg/ml

**Lane 1** : Brain (Rat) Tissue Lysate

**Lane 2** : Spinal Cord (Rat) Tissue Lysate

Lysates/proteins at 10 µg per lane.

### Secondary

**All lanes** : Goat Anti-Rabbit IgG H&L (HRP) preadsorbed (**ab97080**) at 1/5000 dilution

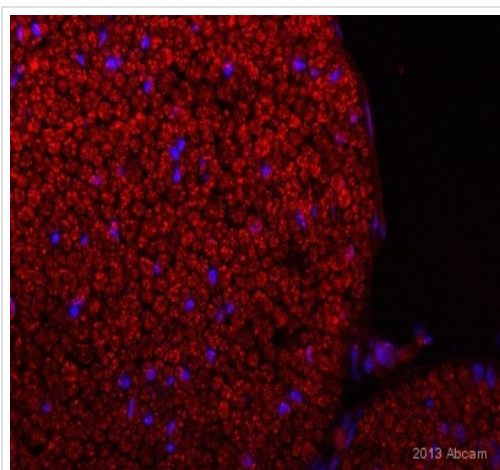
Developed using the ECL technique.

Performed under reducing conditions.

**Predicted band size:** 30 kDa

**Observed band size:** 34 kDa

**Exposure time:** 1 minute



IHC-Fr image of myelin PLP staining on Mouse sciatic nerve sections using ab105784 (1:3000). Fresh frozen sections (10 $\mu$ M) and dried in fumehood for 2 hours before fixing with 10% formalin for 10 min. Sections were permeabilized in 0.1% Triton X-100 in TBS for 10min. Sections were then blocked using 1% BSA for 10 mins at 21°C. ab105784 was diluted 1:2000 in TBS buffer (containing BSA) and sections were then incubated with ab105784 for 16 hours at 21°C. The secondary antibody used was Alexa Fluor® 594 conjugated Goat polyclonal to Rabbit IgG (1:1000).

Immunohistochemistry (Frozen sections) - Anti-Myelin PLP antibody (ab105784)

Image courtesy of Carl Hobbs (Imperial College London, United Kingdom)

**Please note:** All products are "FOR RESEARCH USE ONLY. NOT FOR USE IN DIAGNOSTIC PROCEDURES"

### Our Abpromise to you: Quality guaranteed and expert technical support

---

- Replacement or refund for products not performing as stated on the datasheet
- Valid for 12 months from date of delivery
- Response to your inquiry within 24 hours
- We provide support in Chinese, English, French, German, Japanese and Spanish
- Extensive multi-media technical resources to help you
- We investigate all quality concerns to ensure our products perform to the highest standards

If the product does not perform as described on this datasheet, we will offer a refund or replacement. For full details of the Abpromise, please visit <https://www.abcam.com/abpromise> or contact our technical team.

### Terms and conditions

---

- Guarantee only valid for products bought direct from Abcam or one of our authorized distributors