

Product datasheet

Anti-Myeloid leukemia factor 1 antibody ab229750

3 Images

Overview

Product name	Anti-Myeloid leukemia factor 1 antibody
Description	Rabbit polyclonal to Myeloid leukemia factor 1
Host species	Rabbit
Tested applications	Suitable for: IHC-P, WB
Species reactivity	Reacts with: Mouse, Human
Immunogen	Recombinant full length protein corresponding to Human Myeloid leukemia factor 1 aa 1-268. Database link: P58340
Positive control	WB: Mouse brain lysate. IHC-P: Human testis and colon cancer tissues.
General notes	<p>The Life Science industry has been in the grips of a reproducibility crisis for a number of years. Abcam is leading the way in addressing this with our range of recombinant monoclonal antibodies and knockout edited cell lines for gold-standard validation. Please check that this product meets your needs before purchasing.</p> <p>If you have any questions, special requirements or concerns, please send us an inquiry and/or contact our Support team ahead of purchase. Recommended alternatives for this product can be found below, along with publications, customer reviews and Q&As</p>

Properties

Form	Liquid
Storage instructions	Shipped at 4°C. Store at +4°C short term (1-2 weeks). Upon delivery aliquot. Store at -20°C long term. Avoid freeze / thaw cycle.
Storage buffer	pH: 7.30 Preservative: 0.02% Sodium azide Constituents: PBS, 50% Glycerol (glycerin, glycerine)
Purity	Immunogen affinity purified
Clonality	Polyclonal
Isotype	IgG

Applications

The Abpromise guarantee

Our **Abpromise guarantee** covers the use of ab229750 in the following tested applications.

The application notes include recommended starting dilutions; optimal dilutions/concentrations should be determined by the end user.

Application	Abreviews	Notes
IHC-P		1/20 - 1/200.
WB		1/1000 - 1/5000. Detects a band of approximately 31 kDa (predicted molecular weight: 31 kDa).

Target

Function

Involved in lineage commitment of primary hemopoietic progenitors by restricting erythroid formation and enhancing myeloid formation. Interferes with erythropoietin-induced erythroid terminal differentiation by preventing cells from exiting the cell cycle through suppression of CDKN1B/p27Kip1 levels. Suppresses RFWD2/COP1 activity via CSN3 which activates p53 and induces cell cycle arrest. Binds DNA and affects the expression of a number of genes so may function as a transcription factor in the nucleus.

Tissue specificity

Most abundant in testis, ovary, skeletal muscle, heart, kidney and colon. Low expression in spleen, thymus and peripheral blood leukocytes.

Involvement in disease

Note=A chromosomal aberration involving MLF1 is a cause of myelodysplastic syndrome (MDS). Translocation t(3;5)(q25.1;q34) with NPM1/NPM.

Sequence similarities

Belongs to the MLF family.

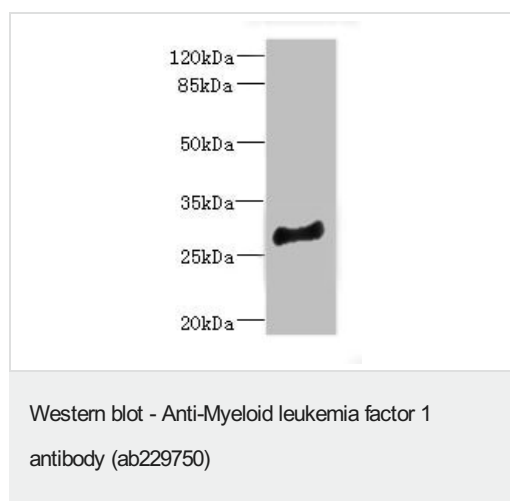
Post-translational modifications

Phosphorylation is required for binding to YWHAZ.

Cellular localization

Cytoplasm. Nucleus. In non-hematopoietic cells, resides primarily in the cytoplasm with some punctate nuclear localization. Shuttles between the cytoplasm and nucleus. In hematopoietic cells, located preferentially in the nucleus. Found in the nucleolus when fused to NPM.

Images



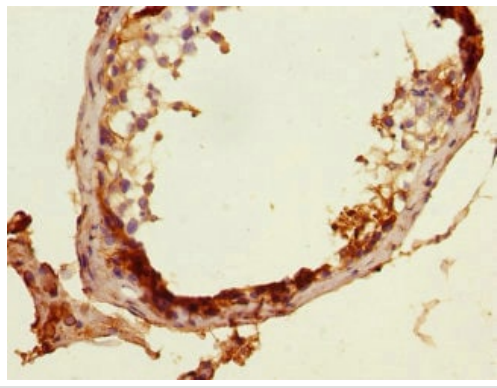
Anti-Myeloid leukemia factor 1 antibody (ab229750) at 1/1000 dilution + mouse brain lysate

Secondary

Goat polyclonal to rabbit at 1/10000 dilution

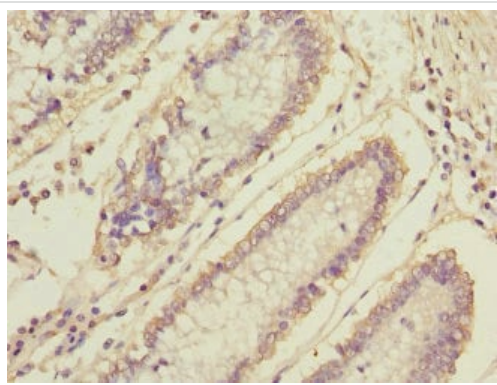
Predicted band size: 31 kDa

Observed band size: 31 kDa



Paraffin-embedded human testis tissue stained for Myeloid leukemia factor 1 using ab229750 at 1/100 dilution in immunohistochemical analysis.

Immunohistochemistry (Formalin/PFA-fixed paraffin-embedded sections) - Anti-Myeloid leukemia factor 1 antibody (ab229750)



Paraffin-embedded human colon cancer tissue stained for Myeloid leukemia factor 1 using ab229750 at 1/100 dilution in immunohistochemical analysis.

Immunohistochemistry (Formalin/PFA-fixed paraffin-embedded sections) - Anti-Myeloid leukemia factor 1 antibody (ab229750)

Please note: All products are "FOR RESEARCH USE ONLY. NOT FOR USE IN DIAGNOSTIC PROCEDURES"

Our Abpromise to you: Quality guaranteed and expert technical support

- Replacement or refund for products not performing as stated on the datasheet
- Valid for 12 months from date of delivery
- Response to your inquiry within 24 hours
- We provide support in Chinese, English, French, German, Japanese and Spanish
- Extensive multi-media technical resources to help you
- We investigate all quality concerns to ensure our products perform to the highest standards

If the product does not perform as described on this datasheet, we will offer a refund or replacement. For full details of the Abpromise, please visit <https://www.abcam.com/abpromise> or contact our technical team.

Terms and conditions

- Guarantee only valid for products bought direct from Abcam or one of our authorized distributors