


### Anti-MYH6 antibody [3-48 G5C7] ab207926

[7 References](#) [4 Images](#)

#### Overview

<b>Product name</b>	Anti-MYH6 antibody [3-48 G5C7]
<b>Description</b>	Mouse monoclonal [3-48 G5C7] to MYH6
<b>Host species</b>	Mouse
<b>Specificity</b>	This antibody recognizes alpha and beta type MYH6 fragments (LMM) of cardiac myosin heavy chains. It also reacts with LMM fragments of cardiac myosin and beta heavy chain of slow human skeletal muscle. The antibody does not crossreact with human myosin light chains Specific for: human, rat and mouse; other species not tested but it is expected to also recognize and heavy chain from canine, bovine and rabbit cardiac tissues.
<b>Tested applications</b>	<b>Suitable for:</b> WB, IHC-P
<b>Species reactivity</b>	<b>Reacts with:</b> Mouse, Rat, Human <b>Predicted to work with:</b> Rabbit, Cow, Dog, Pig 
<b>Immunogen</b>	Full length native protein (purified) corresponding to Human heavy chain cardiac Myosin. Human ventricular myosin.
<b>Positive control</b>	WB: Human fetal, human adult, mouse and rat heart tissue lysates, human, mouse and rat skeletal muscle tissue lysates. IHC-P: Human, mouse and rat heart tissues.
<b>General notes</b>	<p>Molecular weight if IgG: according to SDS-PAGE under mercaptoethanol (reduced conditions) 153.8 kd. Heavy chain: 49.7 kd light chain: 27.2 kd. Molecular weight of F(ab')<sub>2</sub>: according to SDS-PAGE under mercaptoethanol (reduced conditions) 116 kd. Heavy chain: 30.8 kd light chain: 27.2 kd</p> <p>The Life Science industry has been in the grips of a reproducibility crisis for a number of years. Abcam is leading the way in addressing this with our range of recombinant monoclonal antibodies and knockout edited cell lines for gold-standard validation. Please check that this product meets your needs before purchasing.</p> <p>If you have any questions, special requirements or concerns, please send us an inquiry and/or contact our Support team ahead of purchase. Recommended alternatives for this product can be found below, along with publications, customer reviews and Q&amp;As</p>

#### Properties

<b>Form</b>	Liquid
<b>Storage instructions</b>	Shipped at 4°C. Store at +4°C short term (1-2 weeks). Upon delivery aliquot. Store at -20°C or -80°C. Avoid freeze / thaw cycle.

<b>Storage buffer</b>	Lyophilized from PBS pH 7.4
<b>Purity</b>	Protein G purified
<b>Purification notes</b>	Lyophilized protein G purified in PBS pH7.4 (Full IgG).
<b>Clonality</b>	Monoclonal
<b>Clone number</b>	3-48 G5C7
<b>Myeloma</b>	P3x63-Ag8.653
<b>Isotype</b>	IgG1
<b>Light chain type</b>	kappa

## Applications

**The Abpromise guarantee** Our **Abpromise guarantee** covers the use of ab207926 in the following tested applications.

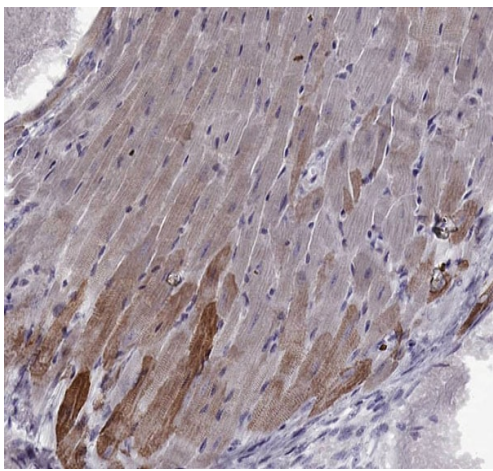
The application notes include recommended starting dilutions; optimal dilutions/concentrations should be determined by the end user.

Application	Abreviews	Notes
WB		1/2000. Predicted molecular weight: 223 kDa.
IHC-P		Use a concentration of 1 µg/ml.

## Target

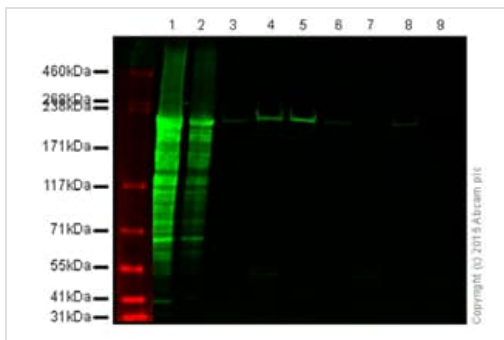
<b>Function</b>	Muscle contraction.
<b>Involvement in disease</b>	Atrial septal defect 3 Cardiomyopathy, familial hypertrophic 14 Cardiomyopathy, dilated 1EE Sick sinus syndrome 3
<b>Sequence similarities</b>	Contains 1 IQ domain. Contains 1 myosin head-like domain.
<b>Domain</b>	The rodlike tail sequence is highly repetitive, showing cycles of a 28-residue repeat pattern composed of 4 heptapeptides, characteristic for alpha-helical coiled coils. Each myosin heavy chain can be split into 1 light meromyosin (LMM) and 1 heavy meromyosin (HMM). It can later be split further into 2 globular subfragments (S1) and 1 rod-shaped subfragment (S2).
<b>Cellular localization</b>	Cytoplasm > myofibril. Thick filaments of the myofibrils.

## Images



Immunohistochemistry (Formalin/PFA-fixed paraffin-embedded sections) - Anti-MYH6 antibody [3-48 G5C7] (ab207926)

Immunohistochemical analysis of formalin/PFA-fixed paraffin-embedded mouse heart tissue labeling MYH6 with ab207926 at 1 µg/ml.



Western blot - Anti-MYH6 antibody [3-48 G5C7] (ab207926)

**All lanes :** Anti-MYH6 antibody [3-48 G5C7] (ab207926) at 1/2000 dilution

**Lane 1 :** Human fetal heart tissue lysate at 20 µg

**Lane 2 :** Human fetal heart tissue lysate at 5 µg

**Lane 3 :** Human adult heart tissue lysate at 20 µg

**Lane 4 :** Mouse heart tissue lysate at 20 µg

**Lane 5 :** Rat heart tissue lysate at 20 µg

**Lane 6 :** Human skeletal muscle tissue lysate at 20 µg

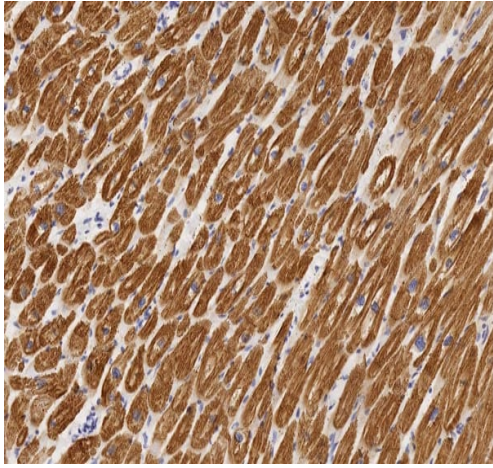
**Lane 7 :** Mouse skeletal muscle tissue lysate at 20 µg

**Lane 8 :** Rat skeletal muscle tissue lysate at 20 µg

**Lane 9 :** Human liver tissue lysate at 20 µg

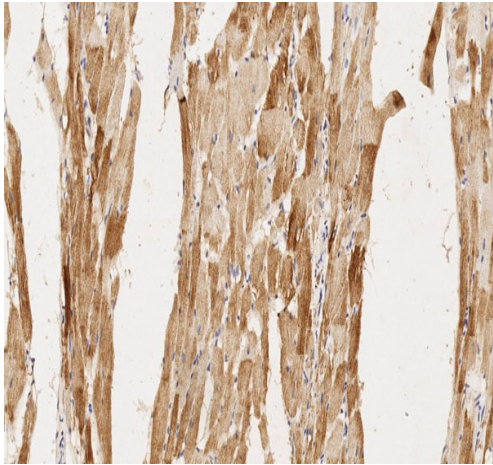
**Predicted band size:** 223 kDa

**Observed band size:** 220 kDa



Immunohistochemical analysis of formalin/PFA-fixed paraffin-embedded human heart tissue labeling MYH6 with ab207926 at 1 µg/ml.

Immunohistochemistry (Formalin/PFA-fixed paraffin-embedded sections) - Anti-MYH6 antibody [3-48 G5C7] (ab207926)



Immunohistochemical analysis of formalin/PFA-fixed paraffin-embedded rat heart tissue labeling MYH6 with ab207926 at 1 µg/ml.

Immunohistochemistry (Formalin/PFA-fixed paraffin-embedded sections) - Anti-MYH6 antibody [3-48 G5C7] (ab207926)

**Please note:** All products are "FOR RESEARCH USE ONLY. NOT FOR USE IN DIAGNOSTIC PROCEDURES"

#### Our Abpromise to you: Quality guaranteed and expert technical support

- Replacement or refund for products not performing as stated on the datasheet

- Valid for 12 months from date of delivery
- Response to your inquiry within 24 hours
- We provide support in Chinese, English, French, German, Japanese and Spanish
- Extensive multi-media technical resources to help you
- We investigate all quality concerns to ensure our products perform to the highest standards

If the product does not perform as described on this datasheet, we will offer a refund or replacement. For full details of the Abpromise, please visit <https://www.abcam.com/abpromise> or contact our technical team.

#### **Terms and conditions**

---

- Guarantee only valid for products bought direct from Abcam or one of our authorized distributors