

# Anti-Myocilin antibody ab41552

[11 References](#) [1 Image](#)

## Overview

<b>Product name</b>	Anti-Myocilin antibody
<b>Description</b>	Rabbit polyclonal to Myocilin
<b>Host species</b>	Rabbit
<b>Specificity</b>	The antibody does not cross react with any other protein in RPE cells.
<b>Tested applications</b>	<b>Suitable for:</b> IHC-P, WB, IP
<b>Species reactivity</b>	<b>Reacts with:</b> Mouse, Rat, Human, Monkey
<b>Immunogen</b>	Synthetic peptide: CLVWDVGARTAQLRKANDQSGR conjugated to KLH, corresponding to N terminal amino acids 25/46 of Myocilin

 [Run BLAST with](#)

 [Run BLAST with](#)

## General notes

The Life Science industry has been in the grips of a reproducibility crisis for a number of years. Abcam is leading the way in addressing this with our range of recombinant monoclonal antibodies and knockout edited cell lines for gold-standard validation. Please check that this product meets your needs before purchasing.

If you have any questions, special requirements or concerns, please send us an inquiry and/or contact our Support team ahead of purchase. Recommended alternatives for this product can be found below, along with publications, customer reviews and Q&As

## Properties

<b>Form</b>	Liquid
<b>Storage instructions</b>	Shipped at 4°C. Store at +4°C short term (1-2 weeks). Upon delivery aliquot. Store at -20°C or -80°C. Avoid freeze / thaw cycle.
<b>Purity</b>	Protein A purified
<b>Clonality</b>	Polyclonal
<b>Isotype</b>	IgG

## Applications

**The Abpromise guarantee** Our [Abpromise guarantee](#) covers the use of ab41552 in the following tested applications.

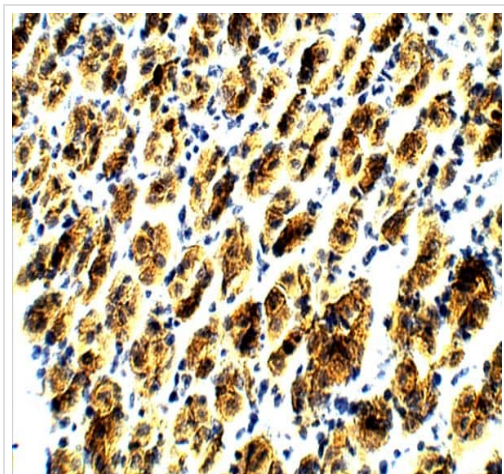
The application notes include recommended starting dilutions; optimal dilutions/concentrations should be determined by the end user.

Application	Abreviews	Notes
IHC-P		1/200.
WB		Use at an assay dependent concentration.
IP		Use at an assay dependent concentration.

## Target

<b>Function</b>	May participate in the obstruction of fluid outflow in the trabecular meshwork.
<b>Tissue specificity</b>	Expressed in large amounts in various types of muscle, ciliary body, papillary sphincter, skeletal muscle, heart and other tissues. Expressed predominantly in the retina. In normal eyes, found in the inner uveal meshwork region and the anterior portion of the meshwork. In contrast, in many glaucomatous eyes, it is found in more regions of the meshwork and appeared more intensively than in normal eyes, regardless of the type or clinical severity of glaucoma.
<b>Involvement in disease</b>	<p>Defects in MYOC are the cause of primary open angle glaucoma type 1A (GLC1A) [MIM:137750]. Primary open angle glaucoma (POAG) is characterized by a specific pattern of optic nerve and visual field defects. The angle of the anterior chamber of the eye is open, and usually the intraocular pressure is increased. The disease is asymptomatic until the late stages, by which time significant and irreversible optic nerve damage has already taken place.</p> <p>Defects in MYOC may also contribute to primary congenital glaucoma type 3A (GLC3A) [MIM:231300]. Defects in MYOC may contribute to this phenotype via digenic inheritance. GLC3A is an autosomal recessive form of primary congenital glaucoma (PCG). PCG is characterized by marked increase of intraocular pressure at birth or early childhood, large ocular globes (buphthalmos) and corneal edema. It results from developmental defects of the trabecular meshwork and anterior chamber angle of the eye that prevent adequate drainage of aqueous humor.</p>
<b>Sequence similarities</b>	Contains 1 olfactomedin-like domain.
<b>Post-translational modifications</b>	<p>Different isoforms may arise by post-translational modifications.</p> <p>Glycosylated.</p> <p>Palmitoylated.</p>
<b>Cellular localization</b>	Rough endoplasmic reticulum. Secreted. Cell projection > cilium. Located preferentially in the ciliary rootlet and basal body of the connecting cilium of photoreceptor cells, and in the rough endoplasmic reticulum. Also secreted.

## Images



Immunohistochemistry (Formalin/PFA-fixed paraffin-embedded sections) - Anti-Myocilin antibody (ab41552)

Immunohistochemistry (Formalin/PFA-fixed paraffin-embedded sections) analysis of mouse stomach tissue labelling Myocilin with ab41552 at a dilution of 1/50. Counterstained with hematoxylin (blue). 40X magnification.

**Please note:** All products are "FOR RESEARCH USE ONLY. NOT FOR USE IN DIAGNOSTIC PROCEDURES"

### Our Abpromise to you: Quality guaranteed and expert technical support

---

- Replacement or refund for products not performing as stated on the datasheet
- Valid for 12 months from date of delivery
- Response to your inquiry within 24 hours
- We provide support in Chinese, English, French, German, Japanese and Spanish
- Extensive multi-media technical resources to help you
- We investigate all quality concerns to ensure our products perform to the highest standards

If the product does not perform as described on this datasheet, we will offer a refund or replacement. For full details of the Abpromise, please visit <https://www.abcam.com/abpromise> or contact our technical team.

### Terms and conditions

---

- Guarantee only valid for products bought direct from Abcam or one of our authorized distributors