




## Product datasheet

### Anti-MyoD1 antibody [5.2F] ab16148

★★★★☆ 17 Abreviews 51 References 2 Images

#### Overview

<b>Product name</b>	Anti-MyoD1 antibody [5.2F]
<b>Description</b>	Mouse monoclonal [5.2F] to MyoD1
<b>Host species</b>	Mouse
<b>Specificity</b>	This antibody does not cross react with Myogenin, Myf5, or Myf6.
<b>Tested applications</b>	<b>Suitable for:</b> Sandwich ELISA, IHC-P
<b>Species reactivity</b>	<b>Reacts with:</b> Mouse, Human <b>Predicted to work with:</b> Chicken, Pig 
<b>Immunogen</b>	Synthetic peptide corresponding to Mouse MyoD1 aa 3-56 (N terminal). Sequence: LLSPPLRDIDLTPDGSLCSFETADDFYDDPCFDSPDLRF FEDLDPRLVH VGAL  Database link: <a href="#">P10085</a> <div>  <a href="#">Run BLAST with</a>  <a href="#">Run BLAST with</a> </div>
<b>Positive control</b>	WB: Mouse muscle tissue lysate. ICC/IF: Rat differentiated skeletal muscle cells. IHC-P: Human rhabdomyosarcoma.
<b>General notes</b>	<p>The Life Science industry has been in the grips of a reproducibility crisis for a number of years. Abcam is leading the way in addressing this with our range of recombinant monoclonal antibodies and knockout edited cell lines for gold-standard validation. Please check that this product meets your needs before purchasing.</p> <p>If you have any questions, special requirements or concerns, please send us an inquiry and/or contact our Support team ahead of purchase. Recommended alternatives for this product can be found below, along with publications, customer reviews and Q&amp;As</p>

#### Properties

<b>Form</b>	Liquid
<b>Storage instructions</b>	Shipped at 4°C. Store at +4°C short term (1-2 weeks). Upon delivery aliquot. Store at -20°C. Avoid freeze / thaw cycle.
<b>Storage buffer</b>	Preservative: 0.08% Sodium azide Constituent: PBS

<b>Purity</b>	Immunogen affinity purified
<b>Clonality</b>	Monoclonal
<b>Clone number</b>	5.2F
<b>Myeloma</b>	Sp2/0-Ag14
<b>Isotype</b>	IgG2a

## Applications

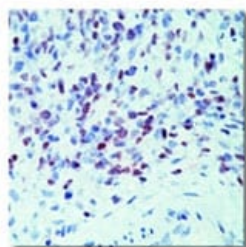
**The Abpromise guarantee** Our **Abpromise guarantee** covers the use of ab16148 in the following tested applications. The application notes include recommended starting dilutions; optimal dilutions/concentrations should be determined by the end user.

Application	Abreviews	Notes
<b>Sandwich ELISA</b>		Use a concentration of 5 µg/ml. Can be paired for Sandwich ELISA with <b>Rabbit polyclonal to MyoD1 (ab64159)</b> . For sandwich ELISA, use this antibody as Capture at 5 µg/ml with <b>Rabbit polyclonal to MyoD1 (ab64159)</b> as Detection.
<b>IHC-P</b>	★★★★★ (6)	Use a concentration of 2 - 4 µg/ml.

## Target

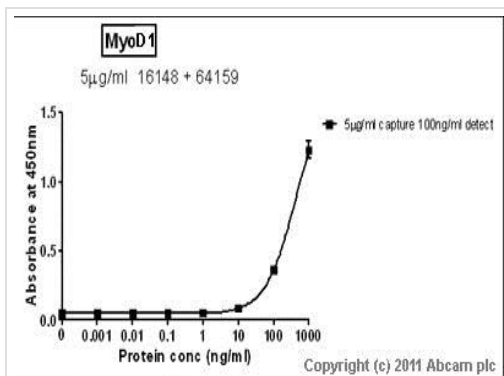
<b>Function</b>	Involved in muscle differentiation (myogenic factor). Induces fibroblasts to differentiate into myoblasts. Activates muscle-specific promoters. Interacts with and is inhibited by the twist protein. This interaction probably involves the basic domains of both proteins.
<b>Sequence similarities</b>	Contains 1 basic helix-loop-helix (bHLH) domain.
<b>Post-translational modifications</b>	Acetylated by a complex containing EP300 and PCAF. The acetylation is essential to activate target genes. Conversely, its deacetylation by SIRT1 inhibits its function. Ubiquitinated on the N-terminus; which is required for proteasomal degradation.
<b>Cellular localization</b>	Nucleus.

## Images



Immunohistochemical staining using ab16148 at 2ug/ml on formalin fixed, paraffin embedded samples of human rhabdomyosarcoma.

Immunohistochemistry (Formalin/PFA-fixed paraffin-embedded sections) - Anti-MyoD1 antibody [5.2F] (ab16148)



Sandwich ELISA - Anti-MyoD1 antibody [5.2F]  
(ab16148)

Standard Curve for Myo-D; dilution range 1 pg/ml to 1 ug/ml using Capture Antibody Mouse monoclonal [5.2F] to MyoD1 (ab16148) at 5ug/ml and Detector Antibody Rabbit polyclonal to MyoD1 (ab64159) at 0.1ug/ml.

**Please note:** All products are "FOR RESEARCH USE ONLY. NOT FOR USE IN DIAGNOSTIC PROCEDURES"

### Our Abpromise to you: Quality guaranteed and expert technical support

- Replacement or refund for products not performing as stated on the datasheet
- Valid for 12 months from date of delivery
- Response to your inquiry within 24 hours
- We provide support in Chinese, English, French, German, Japanese and Spanish
- Extensive multi-media technical resources to help you
- We investigate all quality concerns to ensure our products perform to the highest standards

If the product does not perform as described on this datasheet, we will offer a refund or replacement. For full details of the Abpromise, please visit <https://www.abcam.com/abpromise> or contact our technical team.

### Terms and conditions

- Guarantee only valid for products bought direct from Abcam or one of our authorized distributors