


## Product datasheet

# Anti-Myosin light chain (phospho S1) antibody ab157747

[3 References](#) [2 Images](#)

### Overview

<b>Product name</b>	Anti-Myosin light chain (phospho S1) antibody
<b>Description</b>	Rabbit polyclonal to Myosin light chain (phospho S1)
<b>Host species</b>	Rabbit
<b>Specificity</b>	The immunogen sequence is highly conserved in Human, rat and mouse MYL9, and in other smooth muscle and non-muscle Myosin light chains.
<b>Tested applications</b>	<b>Suitable for:</b> WB, ICC/IF
<b>Species reactivity</b>	<b>Reacts with:</b> Mouse, Rat <b>Predicted to work with:</b> Cow 
<b>Immunogen</b>	Synthetic peptide corresponding to Cow Myosin light chain (N terminal) (phospho-s13 replaces S1) conjugated to keyhole limpet haemocyanin.
<b>Positive control</b>	A7r5 cells; EGF or calyculin A treated Human A431 cell lysates; Mouse C2C12, rat PC12, and rabbit fibroblasts treated with calyculin A.
<b>General notes</b>	<p>The Life Science industry has been in the grips of a reproducibility crisis for a number of years. Abcam is leading the way in addressing this with our range of recombinant monoclonal antibodies and knockout edited cell lines for gold-standard validation. Please check that this product meets your needs before purchasing.</p> <p>If you have any questions, special requirements or concerns, please send us an inquiry and/or contact our Support team ahead of purchase. Recommended alternatives for this product can be found below, along with publications, customer reviews and Q&amp;As</p>

### Properties

<b>Form</b>	Liquid
<b>Storage instructions</b>	Shipped at 4°C. Store at -20°C.
<b>Storage buffer</b>	Preservative: 0.05% Sodium azide Constituents: 50% Glycerol, 0.1% BSA, 49% PBS
<b>Purity</b>	Immunogen affinity purified
<b>Purification notes</b>	ab157747 was affinity purified using phospho-Myosin light chain (Ser-1) peptide (without carrier).
<b>Clonality</b>	Polyclonal

Isotype

IgG

## Applications

### The Abpromise guarantee

Our **Abpromise guarantee** covers the use of ab157747 in the following tested applications.

The application notes include recommended starting dilutions; optimal dilutions/concentrations should be determined by the end user.

Application	Abreviews	Notes
WB		1/1000. Predicted molecular weight: 20 kDa.
ICC/IF		1/100.

## Target

### Function

Myosin regulatory subunit that plays an important role in regulation of both smooth muscle and nonmuscle cell contractile activity via its phosphorylation. Implicated in cytokinesis, receptor capping, and cell locomotion.

### Tissue specificity

Smooth muscle tissues and in some, but not all, nonmuscle cells.

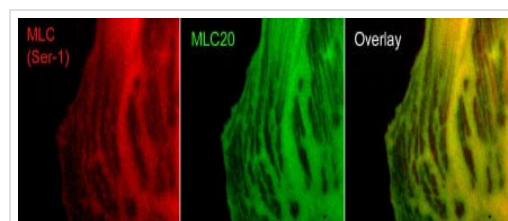
### Sequence similarities

Contains 3 EF-hand domains.

### Post-translational modifications

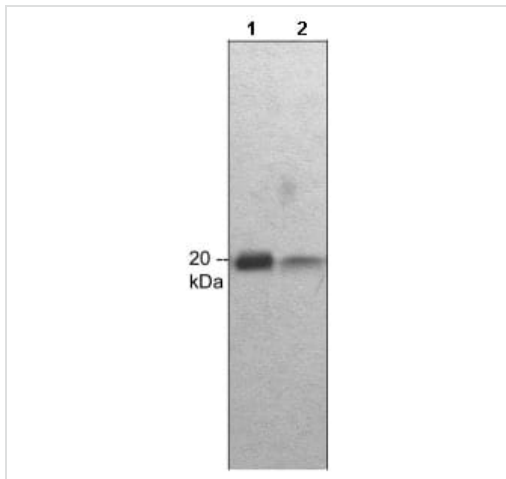
Phosphorylation increases the actin-activated myosin ATPase activity and thereby regulates the contractile activity. It is required to generate the driving force in the migration of the cells but not necessary for localization of myosin-2 at the leading edge.

## Images



Immunocytochemistry/ Immunofluorescence - Anti-Myosin light chain (phospho S1) antibody (ab157747)

Immunofluorescent analysis of paraformaldehyde-fixed A7r5 cells labeling Myosin light chain with ab157747 at 1/100 dilution (left). Cells were dual stained with mouse anti-Myosin light chain antibody (middle panel) and the overlay of staining patterns is shown to the right. Goat anti-mouse Dylight 488 and goat anti-rabbit Dylight 594 were used for detection of primary antibodies.



Western blot - Anti-Myosin light chain (phospho S1) antibody (ab157747)

**All lanes** : Anti-Myosin light chain (phospho S1) antibody (ab157747)

**Lane 1** : C2C12 cell lysate, untreated

**Lane 2** : C2C12 cell lysate treated with Lambda phosphatase

**Predicted band size:** 20 kDa

**Please note:** All products are "FOR RESEARCH USE ONLY. NOT FOR USE IN DIAGNOSTIC PROCEDURES"

### Our Abpromise to you: Quality guaranteed and expert technical support

---

- Replacement or refund for products not performing as stated on the datasheet
- Valid for 12 months from date of delivery
- Response to your inquiry within 24 hours
- We provide support in Chinese, English, French, German, Japanese and Spanish
- Extensive multi-media technical resources to help you
- We investigate all quality concerns to ensure our products perform to the highest standards

If the product does not perform as described on this datasheet, we will offer a refund or replacement. For full details of the Abpromise, please visit <https://www.abcam.com/abpromise> or contact our technical team.

### Terms and conditions

---

- Guarantee only valid for products bought direct from Abcam or one of our authorized distributors