

Anti-n-Myc/MYCN antibody ab272918

[4 Images](#)

Overview

Product name	Anti-n-Myc/MYCN antibody
Description	Rabbit polyclonal to n-Myc/MYCN
Host species	Rabbit
Tested applications	Suitable for: WB
Species reactivity	Reacts with: Mouse, Rat, Human
Immunogen	Synthetic peptide within Human n-Myc/MYCN (C terminal). The exact sequence is proprietary. Carrier-protein conjugated. Database link: P04198
Positive control	WB: Neuro2A, C8D30, NIH/3T3, Raw 264.7 and C2C12 whole cell extract. U-87 MG, SK-N-SH, IMR32 SK-N-AS whole cell extract. IRM32 nuclear extract. Mouse and rat brain tissue extract.
General notes	<p>The Life Science industry has been in the grips of a reproducibility crisis for a number of years. Abcam is leading the way in addressing this with our range of recombinant monoclonal antibodies and knockout edited cell lines for gold-standard validation. Please check that this product meets your needs before purchasing.</p> <p>If you have any questions, special requirements or concerns, please send us an inquiry and/or contact our Support team ahead of purchase. Recommended alternatives for this product can be found below, along with publications, customer reviews and Q&As</p>

Properties

Form	Liquid
Storage instructions	Shipped at 4°C. Store at +4°C short term (1-2 weeks). Upon delivery aliquot. Store at -20°C long term. Avoid freeze / thaw cycle.
Storage buffer	pH: 7.00 Preservative: 0.025% Proclin 300 Constituents: 79% PBS, 20% Glycerol (glycerin, glycerine)
Purity	Immunogen affinity purified
Clonality	Polyclonal
Isotype	IgG

Applications

The Abpromise guarantee

Our **Abpromise guarantee** covers the use of ab272918 in the following tested applications.

The application notes include recommended starting dilutions; optimal dilutions/concentrations should be determined by the end user.

Application	Abreviews	Notes
WB		1/500 - 1/3000.

Target

Function

May function as a transcription factor.

Involvement in disease

Note=Amplification of the N-MYC gene is associated with a variety of human tumors, most frequently neuroblastoma, where the level of amplification appears to increase as the tumor progresses.

Defects in MYCN are the cause of microcephaly-oculo-digito-esophageal-duodenal syndrome (MODED) [MIM:164280]; also known as oculodigitoesophagoduodenal syndrome (ODED).

Microcephaly-oculo-digito-esophageal-duodenal syndrome is characterized by variable combinations of esophageal and duodenal atresias, microcephaly, learning disability and limb malformations. Cardiac and renal malformations, vertebral anomalies, and deafness have also been described.

Defects in MYCN are the cause of microcephaly and digital abnormalities with normal intelligence (MCPHDANI) [MIM:602585].

Sequence similarities

Contains 1 basic helix-loop-helix (bHLH) domain.

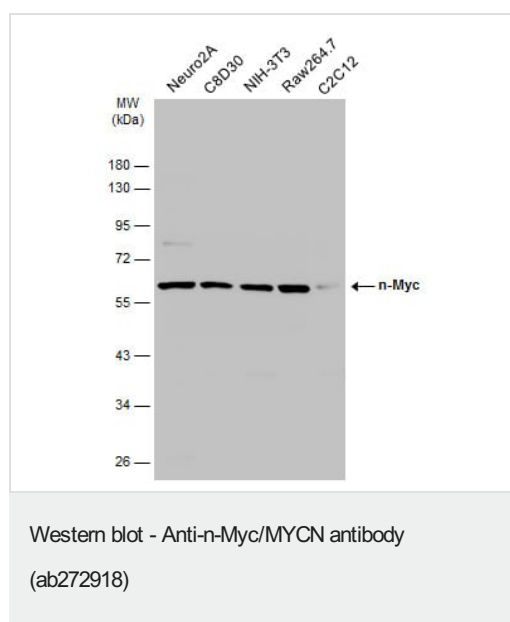
Developmental stage

Expressed during fetal development.

Cellular localization

Nucleus.

Images



All lanes : Anti-n-Myc/MYCN antibody (ab272918) at 1/1000 dilution

Lane 1 : Neuro2A whole cell extract

Lane 2 : C8D30 whole cell extract

Lane 3 : NIH/3T3 whole cell extract

Lane 4 : Raw 264.7 whole cell extract

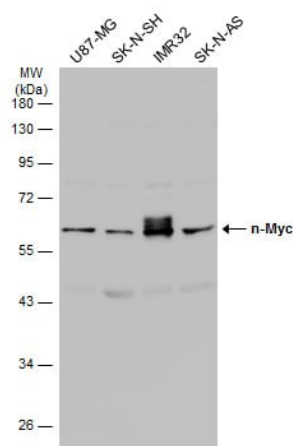
Lane 5 : C2C12 whole cell extract

Lysates/proteins at 30 µg per lane.

Secondary

All lanes : HRP-conjugated anti-rabbit IgG antibody

10% SDS-PAGE



Western blot - Anti-n-Myc/MYCN antibody
(ab272918)

All lanes : Anti-n-Myc/MYCN antibody (ab272918) at 1/1000 dilution

Lane 1 : U-87 MG whole cell extract

Lane 2 : SK-N-SH whole cell extract

Lane 3 : IMR32 whole cell extract

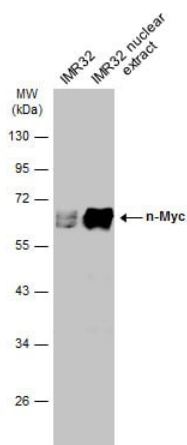
Lane 4 : SK-N-AS whole cell extract

Lysates/proteins at 30 µg per lane.

Secondary

All lanes : HRP-conjugated anti-rabbit IgG antibody

10% SDS-PAGE



Western blot - Anti-n-Myc/MYCN antibody
(ab272918)

All lanes : Anti-n-Myc/MYCN antibody (ab272918) at 1/2500 dilution

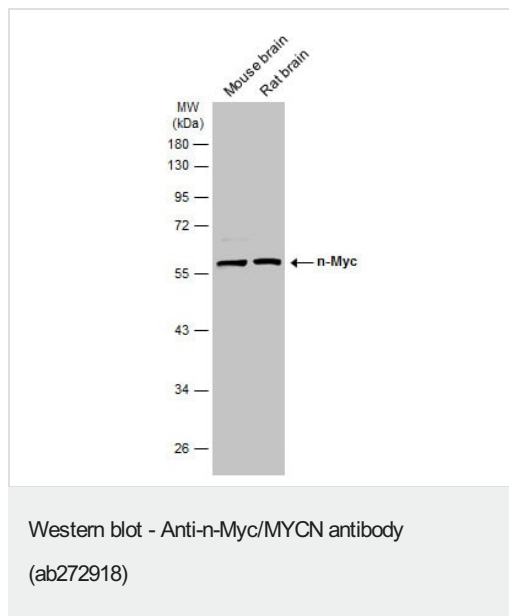
Lane 1 : IMR32 whole cell extract

Lane 2 : IMR32 nuclear extract

Lysates/proteins at 30 µg per lane.

Secondary

All lanes : HRP-conjugated anti-rabbit IgG antibody



All lanes : Anti-n-Myc/MYCN antibody (ab272918) at 1/1000 dilution

Lane 1 : Mouse brain tissue extract

Lane 2 : Rat brain tissue extract

Lysates/proteins at 50 µg per lane.

Secondary

All lanes : HRP-conjugated anti-rabbit IgG antibody

10% SDS-PAGE

Please note: All products are "FOR RESEARCH USE ONLY. NOT FOR USE IN DIAGNOSTIC PROCEDURES"

Our Abpromise to you: Quality guaranteed and expert technical support

- Replacement or refund for products not performing as stated on the datasheet
- Valid for 12 months from date of delivery
- Response to your inquiry within 24 hours
- We provide support in Chinese, English, French, German, Japanese and Spanish
- Extensive multi-media technical resources to help you
- We investigate all quality concerns to ensure our products perform to the highest standards

If the product does not perform as described on this datasheet, we will offer a refund or replacement. For full details of the Abpromise, please visit <https://www.abcam.com/abpromise> or contact our technical team.

Terms and conditions

- Guarantee only valid for products bought direct from Abcam or one of our authorized distributors