

Product datasheet

Anti-N6-methyladenosine (m6A) antibody [17-3-4-1] ab208577

[41 References](#) [3 Images](#)

Overview

Product name	Anti-N6-methyladenosine (m6A) antibody [17-3-4-1]
Description	Mouse monoclonal [17-3-4-1] to N6-methyladenosine (m6A)
Host species	Mouse
Specificity	This antibody recognises N6-methyladenosine in both modified RNA and DNA.
Tested applications	Suitable for: Northwestern, IP, Southern Blot
Species reactivity	Reacts with: Species independent
Immunogen	Chemical/ Small Molecule corresponding to N6-methyladenosine (m6A) conjugated to bovine serum albumin. Hapten N6-methyladenosine-5'-mono-phosphate conjugated to BSA of all N6-methyladenosine
Positive control	methylated RNA (negative control non methylated RNA); single stranded DNA;
General notes	<p>The Life Science industry has been in the grips of a reproducibility crisis for a number of years. Abcam is leading the way in addressing this with our range of recombinant monoclonal antibodies and knockout edited cell lines for gold-standard validation. Please check that this product meets your needs before purchasing.</p> <p>If you have any questions, special requirements or concerns, please send us an inquiry and/or contact our Support team ahead of purchase. Recommended alternatives for this product can be found below, along with publications, customer reviews and Q&As</p>

Properties

Form	Liquid
Storage instructions	Shipped at 4°C. Store at +4°C short term (1-2 weeks). Upon delivery aliquot. Store at -20°C long term. Avoid freeze / thaw cycle.
Storage buffer	Preservative: 0.02% Sodium azide Constituent: 99.98% PBS
Purity	Protein A purified
Clonality	Monoclonal
Clone number	17-3-4-1
Myeloma	Sp2/0-Ag14

Isotype	IgG1
Light chain type	kappa

Applications

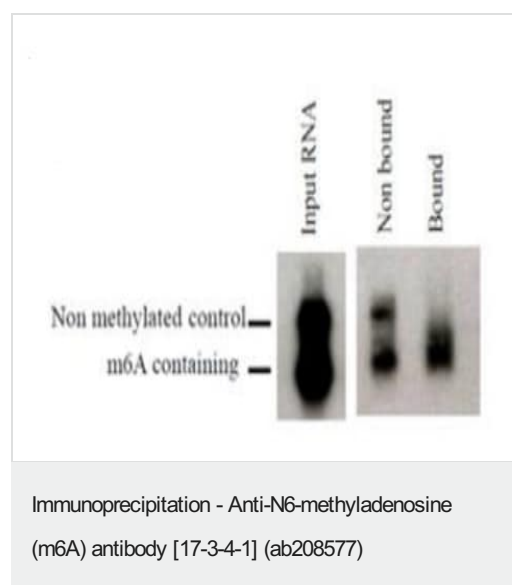
The Abpromise guarantee Our **Abpromise guarantee** covers the use of ab208577 in the following tested applications. The application notes include recommended starting dilutions; optimal dilutions/concentrations should be determined by the end user.

Application	Abreviews	Notes
Northwestern		Use at an assay dependent concentration.
IP		Use at an assay dependent concentration. Best results are obtained by pre-binding the antibody to the beads before washing off unbound immunoglobulin. It is recommended to start with an excess of antibody in order to ensure the Protein G beads are saturated. Used 3µg in 500µl for IP which yielded positive results.
Southern Blot		Use at an assay dependent concentration.

Target

Relevance N6-Methyladenosine (m6A) is an abundant modification found in mRNA, tRNA, snRNA, as well as long non-coding RNA, in all species. RNA adenosine methylation is catalyzed by a multicomponent complex composed of METTL3/MT-A70, METTL14, and WTAP in mammals. METTL3 & METTL14 are responsible for the methyltransferase activity of the complex, and WTAP mediates substrate recruitment.

Images

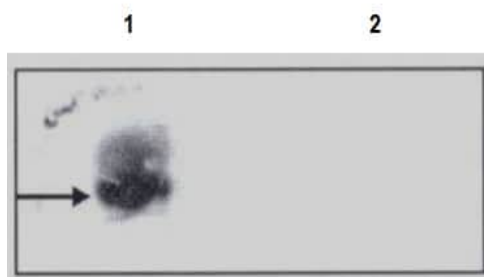


N6-methyladenosine (m6A) was immunoprecipitated using ab208577 from radiolabeled synthetic methylated transcript (Bound); radiolabeled Non methylated control (Non bound) and radiolabeled Input RNA control.



Northwestern blot - Anti-N6-methyladenosine (m6A) antibody [17-3-4-1] (ab208577)

Use of ab208577 for northwestern blot using synthetic methylated and non methylated RNA.



Southern Blot - Anti-N6-methyladenosine (m6A) antibody [17-3-4-1] (ab208577)

Lane 1 Single stranded DNA

Lane 2 Double stranded DNA

Labelled with ab208577. Arrow shows m6A containing fragment.

Please note: All products are "FOR RESEARCH USE ONLY. NOT FOR USE IN DIAGNOSTIC PROCEDURES"

Our Abpromise to you: Quality guaranteed and expert technical support

- Replacement or refund for products not performing as stated on the datasheet
- Valid for 12 months from date of delivery
- Response to your inquiry within 24 hours
- We provide support in Chinese, English, French, German, Japanese and Spanish
- Extensive multi-media technical resources to help you
- We investigate all quality concerns to ensure our products perform to the highest standards

If the product does not perform as described on this datasheet, we will offer a refund or replacement. For full details of the Abpromise, please visit <https://www.abcam.com/abpromise> or contact our technical team.

Terms and conditions

- Guarantee only valid for products bought direct from Abcam or one of our authorized distributors