

## Product datasheet

### Anti-NABC1 antibody ab106661

[3 References](#) [3 Images](#)

#### Overview

<b>Product name</b>	Anti-NABC1 antibody
<b>Description</b>	Rabbit polyclonal to NABC1
<b>Host species</b>	Rabbit
<b>Tested applications</b>	<b>Suitable for:</b> IHC-P, ICC/IF, WB
<b>Species reactivity</b>	<b>Reacts with:</b> Human
<b>Immunogen</b>	A 16 amino acid synthetic peptide near the C terminal of Human NABC1 (EAW75575).
<b>Positive control</b>	Human lung tissue lysate; Human breast carcinoma tissue.
<b>General notes</b>	<p>The Life Science industry has been in the grips of a reproducibility crisis for a number of years. Abcam is leading the way in addressing this with our range of recombinant monoclonal antibodies and knockout edited cell lines for gold-standard validation. Please check that this product meets your needs before purchasing.</p> <p>If you have any questions, special requirements or concerns, please send us an inquiry and/or contact our Support team ahead of purchase. Recommended alternatives for this product can be found below, along with publications, customer reviews and Q&amp;As</p>

#### Properties

<b>Form</b>	Liquid
<b>Storage instructions</b>	Shipped at 4°C. Store at 4°C (stable for up to 12 months).
<b>Storage buffer</b>	pH: 7.2 Preservative: 0.02% Sodium azide Constituent: PBS
<b>Purity</b>	Immunogen affinity purified
<b>Clonality</b>	Polyclonal
<b>Isotype</b>	IgG

#### Applications

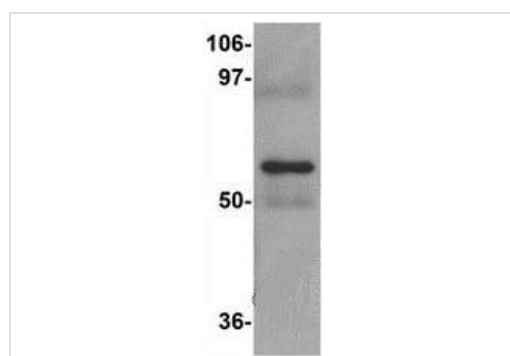
**The Abpromise guarantee** Our **Abpromise guarantee** covers the use of ab106661 in the following tested applications. The application notes include recommended starting dilutions; optimal dilutions/concentrations should be determined by the end user.

Application	Abreviews	Notes
IHC-P		Use a concentration of 5 µg/ml.
ICC/IF		Use a concentration of 20 µg/ml.
WB		Use a concentration of 1 - 2 µg/ml. Predicted molecular weight: 62 kDa.

## Target

<b>Tissue specificity</b>	Expressed in brain and prostate, and at lower levels in testis, intestine and colon. Overexpressed in most breast cancer cell lines and down-regulated in some colorectal tumors.
<b>Cellular localization</b>	Cytoplasm.

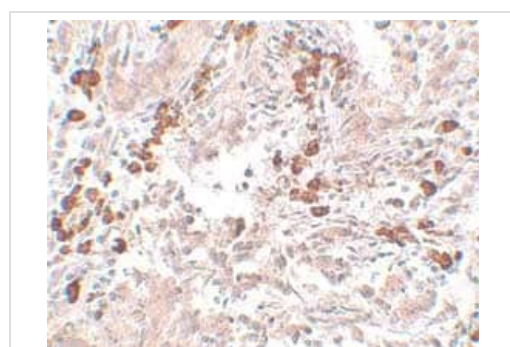
## Images



Western blot - Anti-NABC1 antibody (ab106661)

Anti-NABC1 antibody (ab106661) at 1 µg/ml + Human lung tissue lysate at 15 µg

**Predicted band size:** 62 kDa



Immunohistochemistry (Formalin/PFA-fixed paraffin-embedded sections) - Anti-NABC1 antibody (ab106661)

ab106661, at 5µg/ml, staining NABC1 in Human breast carcinoma tissue by Immunohistochemistry.

Immunocytochemistry/ Immunofluorescence - Anti-NABC1 antibody (ab106661)

Immunofluorescence of BCAS1 in Human Breast Carcinoma cells using ab106661 at 20 ug/ml.

**Please note:** All products are "FOR RESEARCH USE ONLY. NOT FOR USE IN DIAGNOSTIC PROCEDURES"

### Our Abpromise to you: Quality guaranteed and expert technical support

---

- Replacement or refund for products not performing as stated on the datasheet
- Valid for 12 months from date of delivery
- Response to your inquiry within 24 hours
- We provide support in Chinese, English, French, German, Japanese and Spanish
- Extensive multi-media technical resources to help you
- We investigate all quality concerns to ensure our products perform to the highest standards

If the product does not perform as described on this datasheet, we will offer a refund or replacement. For full details of the Abpromise, please visit <https://www.abcam.com/abpromise> or contact our technical team.

### Terms and conditions

---

- Guarantee only valid for products bought direct from Abcam or one of our authorized distributors