



## Product datasheet

# Anti-NAPE-PLD antibody ab246951

[1 References](#) [3 Images](#)

### Overview

<b>Product name</b>	Anti-NAPE-PLD antibody
<b>Description</b>	Rabbit polyclonal to NAPE-PLD
<b>Host species</b>	Rabbit
<b>Tested applications</b>	<b>Suitable for:</b> ICC/IF, IHC-P, WB
<b>Species reactivity</b>	<b>Reacts with:</b> Human
<b>Immunogen</b>	Recombinant fragment corresponding to Human NAPE-PLD aa 100-200. Database link: <a href="#">Q6IQ20</a>
	 <a href="#">Run BLAST with</a>  <a href="#">Run BLAST with</a>
<b>Positive control</b>	IHC-P: Human kidney tissue. ICC/IF: A431 cells. WB: Human liver tissue lysate.
<b>General notes</b>	<p>The Life Science industry has been in the grips of a reproducibility crisis for a number of years. Abcam is leading the way in addressing this with our range of recombinant monoclonal antibodies and knockout edited cell lines for gold-standard validation. Please check that this product meets your needs before purchasing.</p> <p>If you have any questions, special requirements or concerns, please send us an inquiry and/or contact our Support team ahead of purchase. Recommended alternatives for this product can be found below, along with publications, customer reviews and Q&amp;As</p>

### Properties

<b>Form</b>	Liquid
<b>Storage instructions</b>	Shipped at 4°C. Store at +4°C short term (1-2 weeks). Upon delivery aliquot. Store at -20°C long term. Avoid freeze / thaw cycle.
<b>Storage buffer</b>	pH: 7.20 Preservative: 0.02% Sodium azide Constituents: 40% Glycerol (glycerin, glycerine), PBS
<b>Purity</b>	Immunogen affinity purified
<b>Clonality</b>	Polyclonal
<b>Isotype</b>	IgG

### Applications

## The Abpromise guarantee

Our **Abpromise guarantee** covers the use of ab246951 in the following tested applications.

The application notes include recommended starting dilutions; optimal dilutions/concentrations should be determined by the end user.

Application	Abreviews	Notes
ICC/IF		Use a concentration of 0.25 - 2 µg/ml. Fixation/Permeabilization: PFA/Triton X-100.
IHC-P		1/50 - 1/200. Perform heat mediated antigen retrieval with citrate buffer pH 6 before commencing with IHC staining protocol.
WB		Use a concentration of 0.04 - 0.4 µg/ml.

## Target

### Function

Hydrolyzes N-acyl-phosphatidylethanolamines (NAPEs) to produce N-acylethanolamines (NAEs) and phosphatidic acid. Responsible for the generation of anandamide (N-arachidonylethanolamine), the ligand of cannabinoid and vanilloid receptors.

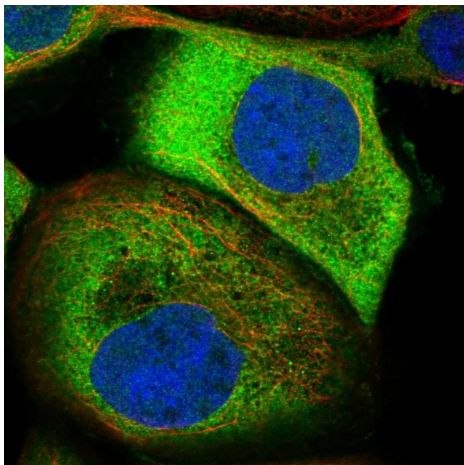
### Sequence similarities

Belongs to the NAPE-PLD family.

### Cellular localization

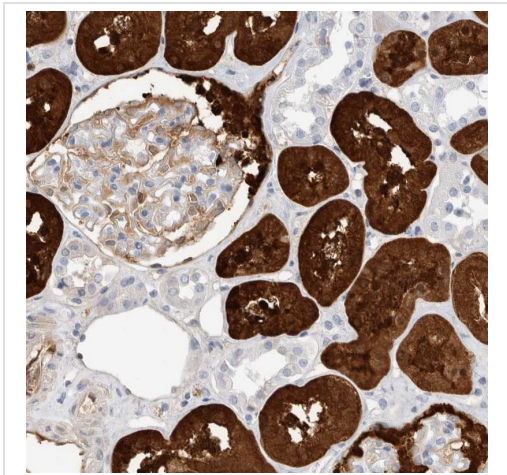
Membrane.

## Images



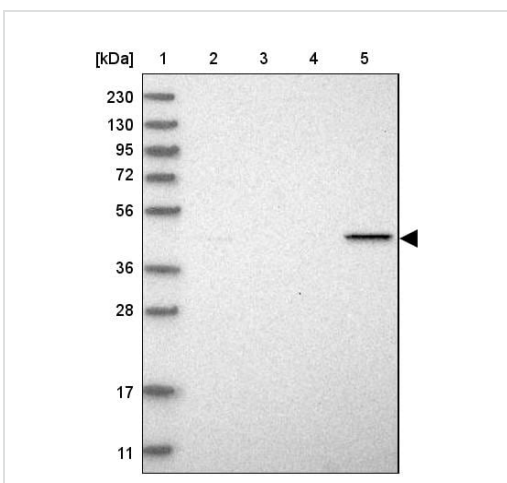
Immunocytochemistry/ Immunofluorescence - Anti-NAPE-PLD antibody (ab246951)

FA fixed, Triton X-100 permeabilized A431 (Human epidermoid carcinoma cell line) cells labeling NAPE-PLD using ab246951 at 4 µg/ml (green) in ICC/IF.



Paraffin-embedded human kidney tissue stained for NAPE-PLD using ab246951 at 1/50 dilution in immunohistochemical analysis.

Immunohistochemistry (Formalin/PFA-fixed paraffin-embedded sections) - Anti-NAPE-PLD antibody (ab246951)



Western blot - Anti-NAPE-PLD antibody (ab246951)

**All lanes :** Anti-NAPE-PLD antibody (ab246951) at 0.4 µg/ml

**Lane 1 :** RT4 (Human urinary bladder cancer cell line) cell lysate

**Lane 2 :** U-251 MG (Human brain glioma cell line) cell lysate

**Lane 3 :** Human plasma (IgG/HSA depleted)

**Lane 4 :** Human liver tissue lysate

**Please note:** All products are "FOR RESEARCH USE ONLY. NOT FOR USE IN DIAGNOSTIC PROCEDURES"

#### Our Abpromise to you: Quality guaranteed and expert technical support

- Replacement or refund for products not performing as stated on the datasheet
- Valid for 12 months from date of delivery
- Response to your inquiry within 24 hours

- We provide support in Chinese, English, French, German, Japanese and Spanish
- Extensive multi-media technical resources to help you
- We investigate all quality concerns to ensure our products perform to the highest standards

If the product does not perform as described on this datasheet, we will offer a refund or replacement. For full details of the Abpromise, please visit <https://www.abcam.com/abpromise> or contact our technical team.

#### **Terms and conditions**

---

- Guarantee only valid for products bought direct from Abcam or one of our authorized distributors