


## Product datasheet

# Anti-NAPE-PLD antibody ab95397

★☆☆☆☆ [1 Abreviews](#) [13 References](#) [1 Image](#)

### Overview

---

<b>Product name</b>	Anti-NAPE-PLD antibody
<b>Description</b>	Rabbit polyclonal to NAPE-PLD
<b>Host species</b>	Rabbit
<b>Tested applications</b>	<b>Suitable for:</b> WB
<b>Species reactivity</b>	<b>Reacts with:</b> Mouse, Human <b>Predicted to work with:</b> Hamster, Orangutan 
<b>Immunogen</b>	Synthetic peptide: YMGPKRFRRSPCTI , corresponding to amino acids 159 - 172 of Human NAPE-PLD (UniProt: Q6IQ20). <a href="#">Run BLAST with</a> <a href="#">Run BLAST with</a>
<b>Positive control</b>	Human cerebellum supernatant, Mouse brain homogenate and Mouse brain high density membrane
<b>General notes</b>	<p>The Life Science industry has been in the grips of a reproducibility crisis for a number of years. Abcam is leading the way in addressing this with our range of recombinant monoclonal antibodies and knockout edited cell lines for gold-standard validation. Please check that this product meets your needs before purchasing.</p> <p>If you have any questions, special requirements or concerns, please send us an inquiry and/or contact our Support team ahead of purchase. Recommended alternatives for this product can be found below, along with publications, customer reviews and Q&amp;As</p>

### Properties

---

<b>Form</b>	Liquid
<b>Storage instructions</b>	Shipped at 4°C. Store at -20°C. Stable for 12 months at -20°C.
<b>Storage buffer</b>	pH: 7.40 Preservative: 0.02% Sodium azide Constituents: 0.1% BSA, 50% Glycerol, Tris buffered saline
<b>Purity</b>	Immunogen affinity purified
<b>Clonality</b>	Polyclonal
<b>Isotype</b>	IgG

## Applications

### The Abpromise guarantee

Our **Abpromise guarantee** covers the use of ab95397 in the following tested applications.

The application notes include recommended starting dilutions; optimal dilutions/concentrations should be determined by the end user.

Application	Abreviews	Notes
WB	★☆☆☆☆ (1)	1/200. Predicted molecular weight: 46 kDa.

## Target

### Function

Hydrolyzes N-acyl-phosphatidylethanolamines (NAPEs) to produce N-acylethanolamines (NAEs) and phosphatidic acid. Responsible for the generation of anandamide (N-arachidonylethanolamine), the ligand of cannabinoid and vanilloid receptors.

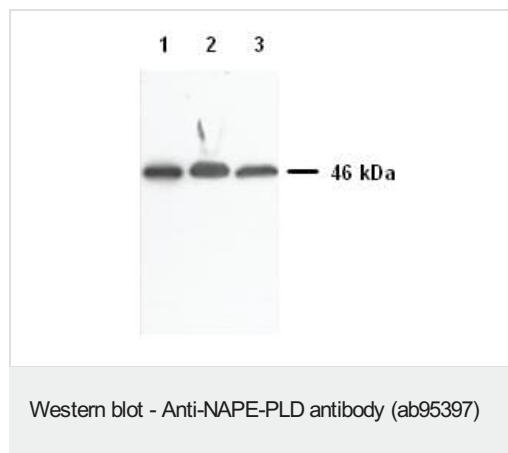
### Sequence similarities

Belongs to the NAPE-PLD family.

### Cellular localization

Membrane.

## Images



**All lanes :** Anti-NAPE-PLD antibody (ab95397) at 3 µg/ml

**Lane 1 :** Human cerebellum supernatant at 20 µg

**Lane 2 :** Mouse brain homogenate at 30 µg

**Lane 3 :** Mouse brain high density membrane at 30 µg

**Predicted band size:** 46 kDa

**Please note:** All products are "FOR RESEARCH USE ONLY. NOT FOR USE IN DIAGNOSTIC PROCEDURES"

## Our Abpromise to you: Quality guaranteed and expert technical support

- Replacement or refund for products not performing as stated on the datasheet
- Valid for 12 months from date of delivery
- Response to your inquiry within 24 hours
- We provide support in Chinese, English, French, German, Japanese and Spanish
- Extensive multi-media technical resources to help you
- We investigate all quality concerns to ensure our products perform to the highest standards

If the product does not perform as described on this datasheet, we will offer a refund or replacement. For full details of the Abpromise, please visit <https://www.abcam.com/abpromise> or contact our technical team.

## Terms and conditions

---

- Guarantee only valid for products bought direct from Abcam or one of our authorized distributors