

Anti-NAPSIN A antibody [NAPSA/1238] ab234002

3 Images

Overview

Product name	Anti-NAPSIN A antibody [NAPSA/1238]
Description	Mouse monoclonal [NAPSA/1238] to NAPSIN A
Host species	Mouse
Tested applications	Suitable for: Protein Array, WB, IHC-P
Species reactivity	Reacts with: Human
Immunogen	Recombinant fragment within Human NAPSIN A aa 189-299. The exact sequence is proprietary. Database link: O96009
Positive control	WB: K562, HEK-293 and A549 cell lysates. IHC-P: Human lung adenocarcinoma tissue.
General notes	<p>The Life Science industry has been in the grips of a reproducibility crisis for a number of years. Abcam is leading the way in addressing this with our range of recombinant monoclonal antibodies and knockout edited cell lines for gold-standard validation. Please check that this product meets your needs before purchasing.</p> <p>If you have any questions, special requirements or concerns, please send us an inquiry and/or contact our Support team ahead of purchase. Recommended alternatives for this product can be found below, along with publications, customer reviews and Q&As</p>

Properties

Form	Liquid
Storage instructions	Shipped at 4°C. Store at +4°C short term (1-2 weeks). Upon delivery aliquot. Store at -20°C long term. Avoid freeze / thaw cycle.
Storage buffer	pH: 7.2 Preservative: 0.05% Sodium azide Constituents: PBS, 0.05% BSA
Purity	Protein A purified
Purification notes	Purified from rabbit anti-serum by Protein A.
Clonality	Monoclonal
Clone number	NAPSA/1238
Isotype	IgG1
Light chain type	kappa

Applications

The Abpromise guarantee

Our **Abpromise guarantee** covers the use of ab234002 in the following tested applications.

The application notes include recommended starting dilutions; optimal dilutions/concentrations should be determined by the end user.

Application	Abreviews	Notes
Protein Array		Use at an assay dependent concentration.
WB		Use a concentration of 1 - 2 µg/ml. Predicted molecular weight: 45 kDa. (Primary incubation for 60 minutes at RT).
IHC-P		Use a concentration of 1 - 2 µg/ml. Perform heat mediated antigen retrieval with citrate buffer pH 6 before commencing with IHC staining protocol. (Primary incubation for 30 minutes at RT).

Target

Function

May be involved in processing of pneumocyte surfactant precursors.

Tissue specificity

Expressed predominantly in adult lung (type II pneumocytes) and kidney and in fetal lung. Low levels in adult spleen and very low levels in peripheral blood leukocytes.

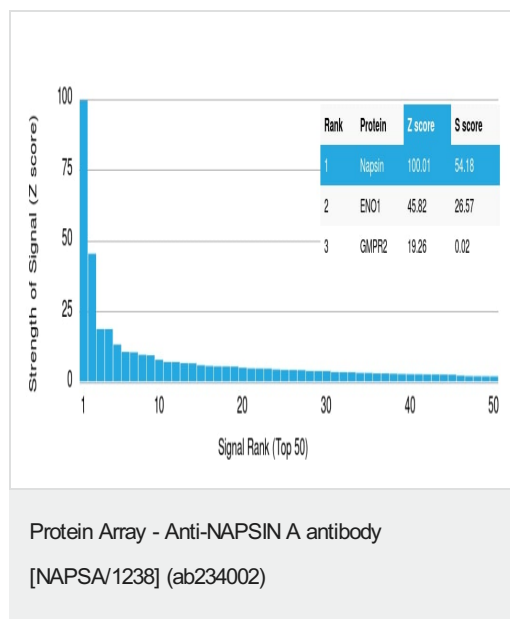
Sequence similarities

Belongs to the peptidase A1 family.

Cellular localization

Secreted.

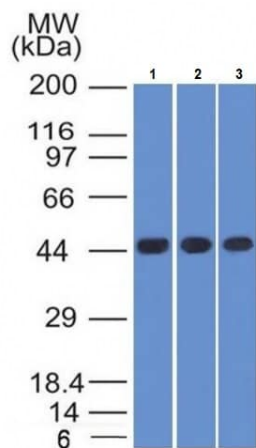
Images



ab234002 was tested in protein array against over 19000 different full-length human proteins.

Z- and S- Score: The Z-score represents the strength of a signal that a monoclonal antibody (MAb) (in combination with a fluorescently-tagged anti-IgG secondary antibody) produces when binding to a particular protein on the HuProt™ array. Z-scores are described in units of standard deviations (SD's) above the mean value of all signals generated on that array. If targets on HuProt™ are arranged in descending order of the Z-score, the S-score is the difference (also in units of SD's) between the Z-score. S-score therefore represents the relative target specificity of a MAb to its intended target.

A MAb is specific to its intended target if the MAb has an S-score of at least 2.5. For example, if a MAb binds to protein X with a Z-score of 43 and to protein Y with a Z-score of 14, then the S-score for the binding of that MAb to protein X is equal to 29.



Western blot - Anti-NAPSIN A antibody
[NAPSA/1238] (ab234002)

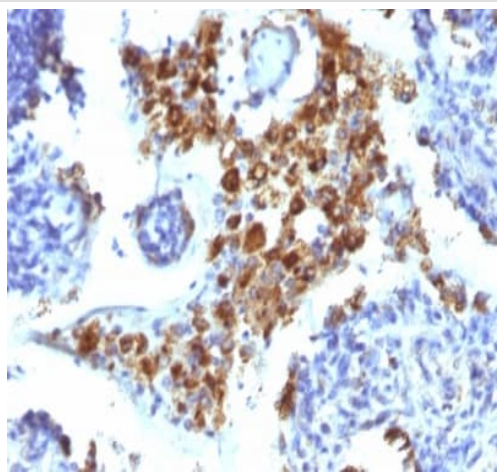
All lanes : Anti-NAPSIN A antibody [NAPSA/1238] (ab234002) at 2 µg/ml

Lane 1 : K562 (human chronic myelogenous leukemia cell line from bone marrow) cell lysate

Lane 2 : HEK-293 (human epithelial cell line from embryonic kidney) cell lysate

Lane 3 : A549 (human chronic lung carcinoma cell line) cell lysate

Predicted band size: 45 kDa



Immunohistochemistry (Formalin/PFA-fixed paraffin-embedded sections) - Anti-NAPSIN A antibody
[NAPSA/1238] (ab234002)

Formalin-fixed, paraffin-embedded human lung adenocarcinoma tissue stained for NAPSIN A using ab234002 at 2 µg/ml in immunohistochemical analysis.

Please note: All products are "FOR RESEARCH USE ONLY. NOT FOR USE IN DIAGNOSTIC PROCEDURES"

Our Abpromise to you: Quality guaranteed and expert technical support

- Replacement or refund for products not performing as stated on the datasheet
- Valid for 12 months from date of delivery
- Response to your inquiry within 24 hours
- We provide support in Chinese, English, French, German, Japanese and Spanish
- Extensive multi-media technical resources to help you
- We investigate all quality concerns to ensure our products perform to the highest standards

If the product does not perform as described on this datasheet, we will offer a refund or replacement. For full details of the Abpromise, please visit <https://www.abcam.com/abpromise> or contact our technical team.

Terms and conditions

- Guarantee only valid for products bought direct from Abcam or one of our authorized distributors