

Product datasheet

Anti-NAS6 antibody ab91447

[2 References](#) [1 Image](#)

Overview

Product name	Anti-NAS6 antibody
Description	Rabbit polyclonal to NAS6
Host species	Rabbit
Tested applications	Suitable for: WB, IP
Species reactivity	Reacts with: <i>Saccharomyces cerevisiae</i>
Immunogen	Recombinant full length <i>Saccharomyces cerevisiae</i> NAS6 protein, expressed in <i>E. coli</i> .
Positive control	Crude extract of <i>S. cerevisiae</i>
General notes	<p>The Life Science industry has been in the grips of a reproducibility crisis for a number of years. Abcam is leading the way in addressing this with our range of recombinant monoclonal antibodies and knockout edited cell lines for gold-standard validation. Please check that this product meets your needs before purchasing.</p> <p>If you have any questions, special requirements or concerns, please send us an inquiry and/or contact our Support team ahead of purchase. Recommended alternatives for this product can be found below, along with publications, customer reviews and Q&As</p>

Properties

Form	Liquid
Storage instructions	Shipped at 4°C. Upon delivery aliquot and store at -20°C. Avoid repeated freeze / thaw cycles.
Storage buffer	pH: 6 Preservative: 0.09% Sodium azide Constituents: PBS, 0.1% BSA, 50% Glycerol (glycerin, glycerine)
Purity	Immunogen affinity purified
Clonality	Polyclonal
Isotype	IgG

Applications

The Abpromise guarantee Our **Abpromise guarantee** covers the use of ab91447 in the following tested applications. The application notes include recommended starting dilutions; optimal dilutions/concentrations should be determined by the end user.

Application	Abreviews	Notes
WB		1/5000. Predicted molecular weight: 26 kDa.
IP		Use at an assay dependent dilution.

Target

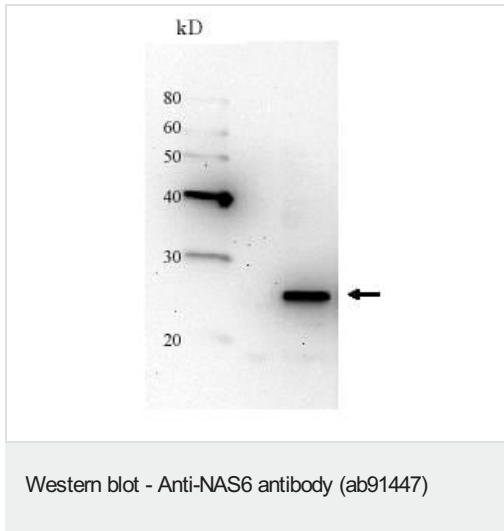
Relevance

NAS6 (p28) is a proteasome-interacting protein which acts as a chaperone to assemble the base sub-complex of the 19S RP which is involved in the ATP-dependent degradation of ubiquitinated proteins. NAS6 is composed of 226 amino acid residues with calculated molecular masses of 24.4kD.

Cellular localization

Cytosol; Nucleus; Proteasome complex

Images



Anti-NAS6 antibody (ab91447) at 1/5000 dilution + Crude extract of *S. cerevisiae*

Predicted band size: 26 kDa

Please note: All products are "FOR RESEARCH USE ONLY. NOT FOR USE IN DIAGNOSTIC PROCEDURES"

Our Abpromise to you: Quality guaranteed and expert technical support

- Replacement or refund for products not performing as stated on the datasheet
- Valid for 12 months from date of delivery
- Response to your inquiry within 24 hours
- We provide support in Chinese, English, French, German, Japanese and Spanish
- Extensive multi-media technical resources to help you
- We investigate all quality concerns to ensure our products perform to the highest standards

If the product does not perform as described on this datasheet, we will offer a refund or replacement. For full details of the Abpromise, please visit <https://www.abcam.com/abpromise> or contact our technical team.

Terms and conditions

- Guarantee only valid for products bought direct from Abcam or one of our authorized distributors