


# Anti-NBR1 antibody - C-terminal ab226360

2 Images

### Overview

<b>Product name</b>	Anti-NBR1 antibody - C-terminal
<b>Description</b>	Rabbit polyclonal to NBR1 - C-terminal
<b>Host species</b>	Rabbit
<b>Tested applications</b>	<b>Suitable for:</b> IP, WB
<b>Species reactivity</b>	<b>Reacts with:</b> Human <b>Predicted to work with:</b> Orangutan 
<b>Immunogen</b>	Synthetic peptide within Human NBR1 aa 916-966 (C terminal). The exact sequence is proprietary. Database link: <a href="#">Q14596</a>
<b>Positive control</b>	WB: HeLa, HEK-293T and Jurkat whole cell lysates. IP: HeLa whole cell lysate.
<b>General notes</b>	<p>The Life Science industry has been in the grips of a reproducibility crisis for a number of years. Abcam is leading the way in addressing this with our range of recombinant monoclonal antibodies and knockout edited cell lines for gold-standard validation. Please check that this product meets your needs before purchasing.</p> <p>If you have any questions, special requirements or concerns, please send us an inquiry and/or contact our Support team ahead of purchase. Recommended alternatives for this product can be found below, along with publications, customer reviews and Q&amp;As</p>

### Properties

<b>Form</b>	Liquid
<b>Storage instructions</b>	Shipped at 4°C. Store at +4°C short term (1-2 weeks). Upon delivery aliquot. Store at -20°C long term. Avoid freeze / thaw cycle.
<b>Storage buffer</b>	pH: 7 Preservative: 0.09% Sodium azide Constituent: Tris citrate/phosphate  pH 7 to 8
<b>Purity</b>	Immunogen affinity purified
<b>Purification notes</b>	ab226360 was affinity purified using an epitope specific to NBR1 immobilized on solid support.
<b>Clonality</b>	Polyclonal

Isotype

IgG

## Applications

### The Abpromise guarantee

Our **Abpromise guarantee** covers the use of ab226360 in the following tested applications.

The application notes include recommended starting dilutions; optimal dilutions/concentrations should be determined by the end user.

Application	Abreviews	Notes
IP		Use at 2-10 µg/mg of lysate.
WB		1/2000 - 1/10000. Predicted molecular weight: 107 kDa.

## Target

### Function

Acts probably as a receptor for selective autophagosomal degradation of ubiquitinated targets.

### Sequence similarities

Contains 1 OPR domain.

Contains 1 UBA domain.

Contains 1 ZZ-type zinc finger.

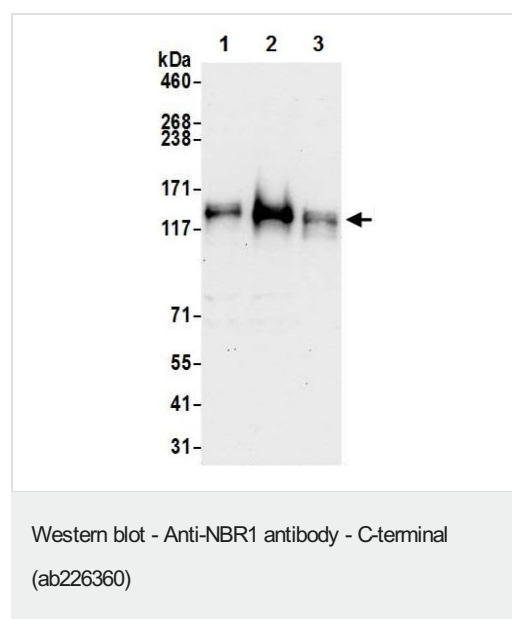
### Domain

The OPR domain mediates interaction with SQSTM1.

### Cellular localization

Cytoplasm. Cytoplasmic vesicle > autophagosome. Lysosome. Cytoplasm > myofibril > sarcomere > M line. In cardiac muscles localizes to the sarcomeric M line (By similarity). Is targeted to lysosomes for degradation.

## Images



**All lanes :** Anti-NBR1 antibody - C-terminal (ab226360) at 0.1 µg/ml

**Lane 1 :** HeLa (human epithelial cell line from cervix adenocarcinoma) whole cell lysate

**Lane 2 :** HEK-293T (human epithelial cell line from embryonic kidney transformed with large T antigen) whole cell lysate

**Lane 3 :** Jurkat (human T cell leukemia cell line from peripheral blood) whole cell lysate

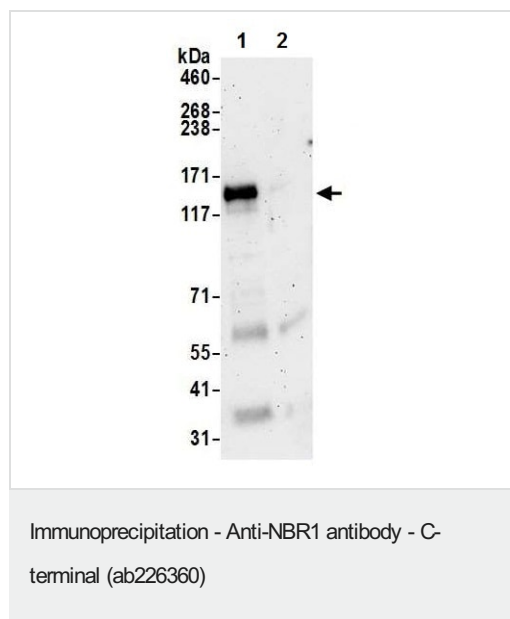
Lysates/proteins at 50 µg per lane.

Developed using the ECL technique.

**Predicted band size:** 107 kDa

**Exposure time:** 30 seconds

Cell lysates were prepared using NETN lysis buffer.



NBR1 was immunoprecipitated from HeLa (human epithelial cell line from cervix adenocarcinoma) whole cell lysate (prepared using NETN lysis buffer; 20% of IP loaded) with ab226360 at 6 µg per reaction. Western blot was performed from the immunoprecipitate using ab226360 at 1 µg/ml.

Lane 1: ab226360 IP in HeLa whole cell lysate.

Lane 2: Control IgG IP in HeLa whole cell lysate.

Detection: Chemiluminescence with exposure time of 3 minutes.

**Please note:** All products are "FOR RESEARCH USE ONLY. NOT FOR USE IN DIAGNOSTIC PROCEDURES"

### Our Abpromise to you: Quality guaranteed and expert technical support

- Replacement or refund for products not performing as stated on the datasheet
- Valid for 12 months from date of delivery
- Response to your inquiry within 24 hours
- We provide support in Chinese, English, French, German, Japanese and Spanish
- Extensive multi-media technical resources to help you
- We investigate all quality concerns to ensure our products perform to the highest standards

If the product does not perform as described on this datasheet, we will offer a refund or replacement. For full details of the Abpromise, please visit <https://www.abcam.com/abpromise> or contact our technical team.

### Terms and conditions

- Guarantee only valid for products bought direct from Abcam or one of our authorized distributors