

## Product datasheet

### Anti-NCE2/UBE2F antibody [EPR12932] ab185234

KO VALIDATED

Recombinant

RabMAb

[4 References](#) [7 Images](#)

#### Overview

<b>Product name</b>	Anti-NCE2/UBE2F antibody [EPR12932]
<b>Description</b>	Rabbit monoclonal [EPR12932] to NCE2/UBE2F
<b>Host species</b>	Rabbit
<b>Tested applications</b>	<b>Suitable for:</b> Flow Cyt (Intra), WB, IHC-P, ICC/IF
<b>Species reactivity</b>	<b>Reacts with:</b> Human
<b>Immunogen</b>	Recombinant fragment. This information is proprietary to Abcam and/or its suppliers.
<b>Positive control</b>	WB: HeLa, Jurkat, A375 and NTERA2/D1 cell lysates. Flow Cyt (intra): A375 cells. ICC/IF: A375 cells. IHC-P: Human brain and Human renal carcinoma tissues.
<b>General notes</b>	<p>This product is a recombinant monoclonal antibody, which offers several advantages including:</p> <ul style="list-style-type: none"> <li>- High batch-to-batch consistency and reproducibility</li> <li>- Improved sensitivity and specificity</li> <li>- Long-term security of supply</li> <li>- Animal-free production</li> </ul> <p>For more information <a href="#">see here</a>.</p> <p>Our RabMAb<sup>®</sup> technology is a patented hybridoma-based technology for making rabbit monoclonal antibodies. For details on our patents, please refer to <a href="#">RabMAb<sup>®</sup> patents</a>.</p>

#### Properties

<b>Form</b>	Liquid
<b>Storage instructions</b>	Shipped at 4°C. Store at +4°C short term (1-2 weeks). Upon delivery aliquot. Store at -20°C long term. Avoid freeze / thaw cycle.
<b>Storage buffer</b>	<p>pH: 7.2</p> <p>Preservative: 0.01% Sodium azide</p> <p>Constituents: 59% PBS, 40% Glycerol (glycerin, glycerine), 0.05% BSA</p>
<b>Purity</b>	Protein A purified
<b>Clonality</b>	Monoclonal
<b>Clone number</b>	EPR12932
<b>Isotype</b>	IgG

## Applications

### The Abpromise guarantee

Our **Abpromise guarantee** covers the use of ab185234 in the following tested applications.

The application notes include recommended starting dilutions; optimal dilutions/concentrations should be determined by the end user.

Application	Abreviews	Notes
Flow Cyt (Intra)		1/160. <b>ab172730</b> - Rabbit monoclonal IgG, is suitable for use as an isotype control with this antibody.
WB		1/1000. Detects a band of approximately 21 kDa (predicted molecular weight: 21 kDa).
IHC-P		1/50 - 1/100. Perform heat mediated antigen retrieval with Tris/EDTA buffer pH 9.0 before commencing with IHC staining protocol.
ICC/IF		1/250.

## Target

### Function

Accepts the ubiquitin-like protein NEDD8 from the UBA3-NAE1 E1 complex and catalyzes its covalent attachment to other proteins. The specific interaction with the E3 ubiquitin ligase RBX2, but not RBX1, suggests that the RBX2-UBE2F complex neddylates specific target proteins, such as CUL5.

### Tissue specificity

Widely expressed (at protein level).

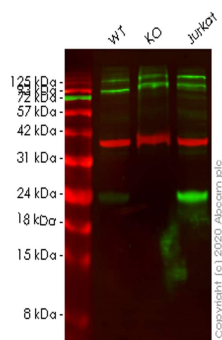
### Pathway

Protein modification; protein neddylation.

### Sequence similarities

Belongs to the ubiquitin-conjugating enzyme family. UBE2F subfamily.

## Images



Western blot - Anti-NCE2/UBE2F antibody  
[EPR12932] (ab185234)

**All lanes** : Anti-NCE2/UBE2F antibody [EPR12932] (ab185234) at  
1/1000 dilution

**Lane 1** : Wild-type HeLa cell lysate

**Lane 2** : UBE2F knockout HeLa cell lysate

**Lane 3** : Jurkat cell lysate

Lysates/proteins at 20 µg per lane.

### Secondary

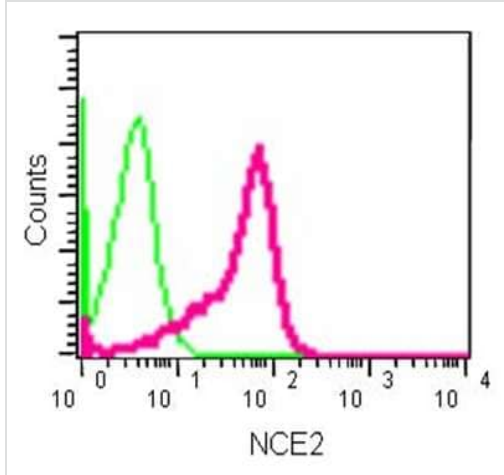
**All lanes** : Goat anti-Rabbit IgG H&L (IRDye® 800CW)  
preadsorbed ([ab216773](#)) at 1/10000 dilution

**Predicted band size:** 21 kDa

**Observed band size:** 24 kDa

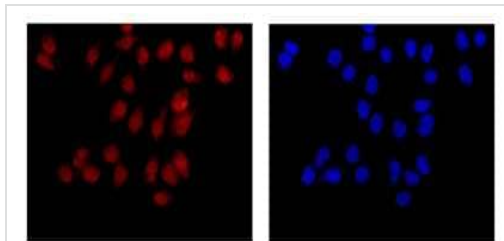
**Lanes 1-3:** Merged signal (red and green). Green - ab185234  
observed at 24 kDa. Red - loading control [ab8245](#) observed at 36  
kDa.

ab185234 Anti-NCE2/UBE2F antibody [EPR12932] was shown to  
specifically react with NCE2/UBE2F in wild-type HeLa cells. Loss of  
signal was observed when knockout cell line [ab265339](#) (knockout  
cell lysate [ab257777](#)) was used. Wild-type and NCE2/UBE2F  
knockout samples were subjected to SDS-PAGE. ab185234 and  
Anti-GAPDH antibody [6C5] - Loading Control ([ab8245](#)) were  
incubated overnight at 4°C at 1 in 1000 dilution and 1 in 20000  
dilution respectively. Blots were developed with Goat anti-Rabbit  
IgG H&L (IRDye® 800CW) preadsorbed ([ab216773](#)) and Goat anti-  
Mouse IgG H&L (IRDye® 680RD) preadsorbed ([ab216776](#))  
secondary antibodies at 1 in 20000 dilution for 1 hour at room  
temperature before imaging.



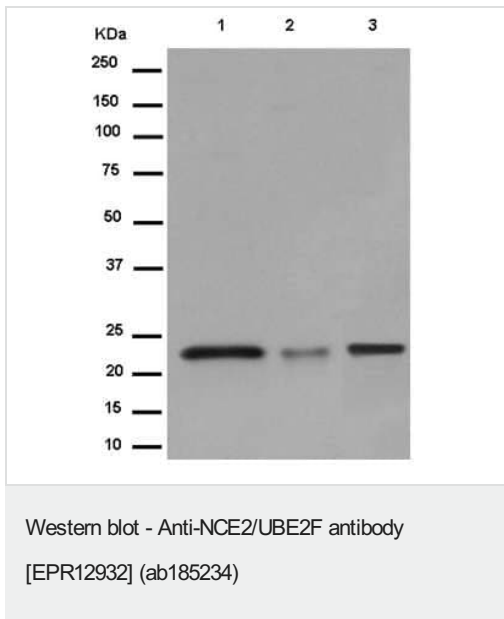
Flow Cytometry (Intracellular) - Anti-NCE2/UBE2F antibody [EPR12932] (ab185234)

Intracellular flow cytometric analysis of A375 cells (2% paraformaldehyde-fixed) labeling NCE2/UBE2F with ab185234 at 1/160 dilution (red) or a rabbit IgG (negative) (green), followed by Goat anti rabbit IgG (FITC) secondary at 1/150 dilution.



Immunocytochemistry/ Immunofluorescence - Anti-NCE2/UBE2F antibody [EPR12932] (ab185234)

Immunofluorescent analysis of A375 cells (4% paraformaldehyde-fixed) labeling NCE2/UBE2F with ab185234 at 1/250 dilution followed by Goat anti rabbit IgG (AlexaFluor® 555) secondary at 1/200 dilution and counter-stained with DAPI (blue).



**All lanes :** Anti-NCE2/UBE2F antibody [EPR12932] (ab185234) at 1/1000 dilution

**Lane 1 :** Jurkat cell lysate

**Lane 2 :** A375 cell lysate

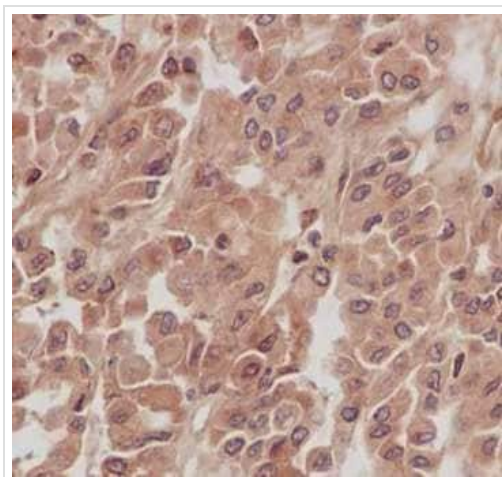
**Lane 3 :** NTERA2/D1 cell lysate

Lysates/proteins at 20 µg per lane.

#### Secondary

**All lanes :** Goat Anti-Rabbit IgG, (H+L), Peroxidase conjugated at 1/1000 dilution

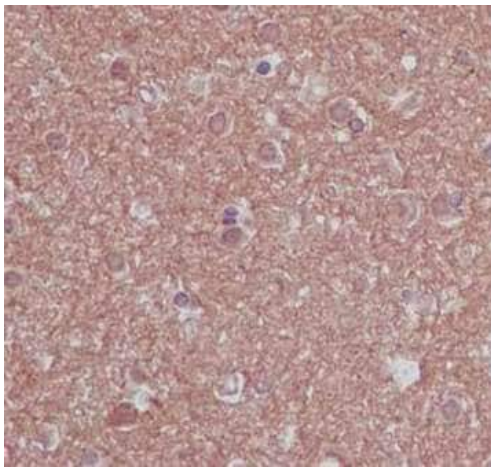
**Predicted band size:** 21 kDa



Immunohistochemical analysis of paraffin-embedded Human renal carcinoma labeling NCE2/UBE2F with ab185234 at 1/100 dilution followed by pre-diluted HRP-conjugated secondary antibody and counter-stained with Hematoxylin.

Perform heat mediated antigen retrieval with EDTA buffer pH 9 before commencing with IHC staining protocol.

Immunohistochemistry (Formalin/PFA-fixed paraffin-embedded sections) - Anti-NCE2/UBE2F antibody [EPR12932] (ab185234)

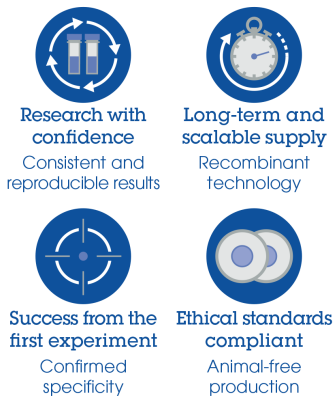


Immunohistochemistry (Formalin/PFA-fixed paraffin-embedded sections) - Anti-NCE2/UBE2F antibody [EPR12932] (ab185234)

Immunohistochemical analysis of paraffin-embedded Human brain labeling NCE2/UBE2F with ab185234 at 1/100 dilution followed by pre-diluted HRP-conjugated secondary antibody and counter-stained with Hematoxylin.

Perform heat mediated antigen retrieval with EDTA buffer pH 9 before commencing with IHC staining protocol.

#### Why choose a recombinant antibody?



Anti-NCE2/UBE2F antibody [EPR12932] (ab185234)

**Please note:** All products are "FOR RESEARCH USE ONLY. NOT FOR USE IN DIAGNOSTIC PROCEDURES"

#### Our Abpromise to you: Quality guaranteed and expert technical support

- Replacement or refund for products not performing as stated on the datasheet
- Valid for 12 months from date of delivery
- Response to your inquiry within 24 hours
- We provide support in Chinese, English, French, German, Japanese and Spanish
- Extensive multi-media technical resources to help you
- We investigate all quality concerns to ensure our products perform to the highest standards

If the product does not perform as described on this datasheet, we will offer a refund or replacement. For full details of the Abpromise, please visit <https://www.abcam.com/abpromise> or contact our technical team.

#### **Terms and conditions**

---

- Guarantee only valid for products bought direct from Abcam or one of our authorized distributors