

## Product datasheet

# Anti-NCR1 antibody [2B11E12] ab233808

[3 Images](#)

### Overview

---

<b>Product name</b>	Anti-NCR1 antibody [2B11E12]
<b>Description</b>	Mouse monoclonal [2B11E12] to NCR1
<b>Host species</b>	Mouse
<b>Tested applications</b>	<b>Suitable for:</b> WB, Flow Cyt
<b>Species reactivity</b>	<b>Reacts with:</b> Human
<b>Immunogen</b>	Recombinant full length protein corresponding to Human NCR1 aa 22-258. (Expressed in E.coli). Database link: <a href="#">O76036</a>
<b>Positive control</b>	WB: Recombinant human NCR1 protein; NCR1 (aa 22-258)-hlgGfc transfected HEK-293 cell lysate. Flow: HL-60 cells.
<b>General notes</b>	<p>The Life Science industry has been in the grips of a reproducibility crisis for a number of years. Abcam is leading the way in addressing this with our range of recombinant monoclonal antibodies and knockout edited cell lines for gold-standard validation. Please check that this product meets your needs before purchasing.</p> <p>If you have any questions, special requirements or concerns, please send us an inquiry and/or contact our Support team ahead of purchase. Recommended alternatives for this product can be found below, along with publications, customer reviews and Q&amp;As</p>

### Properties

---

<b>Form</b>	Liquid
<b>Storage instructions</b>	Shipped at 4°C. Store at +4°C short term (1-2 weeks). Upon delivery aliquot. Store at -20°C long term. Avoid freeze / thaw cycle.
<b>Storage buffer</b>	Preservative: 0.05% Sodium azide Constituent: PBS
<b>Purity</b>	Protein G purified
<b>Purification notes</b>	Purified from tissue culture supernatant.
<b>Clonality</b>	Monoclonal
<b>Clone number</b>	2B11E12
<b>Isotype</b>	IgG1

## Applications

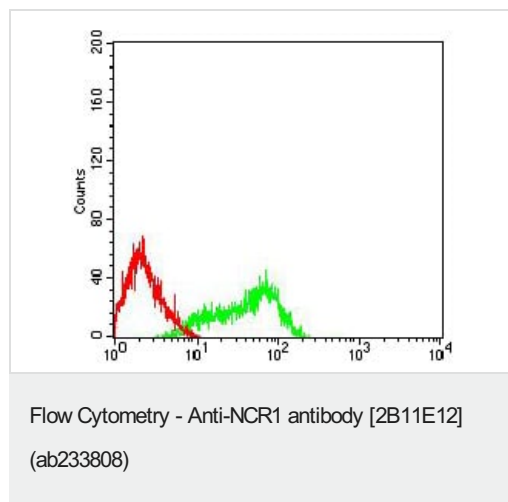
**The Abpromise guarantee** Our **Abpromise guarantee** covers the use of ab233808 in the following tested applications. The application notes include recommended starting dilutions; optimal dilutions/concentrations should be determined by the end user.

Application	Abreviews	Notes
WB		1/500 - 1/2000.
Flow Cyt		1/200 - 1/400.

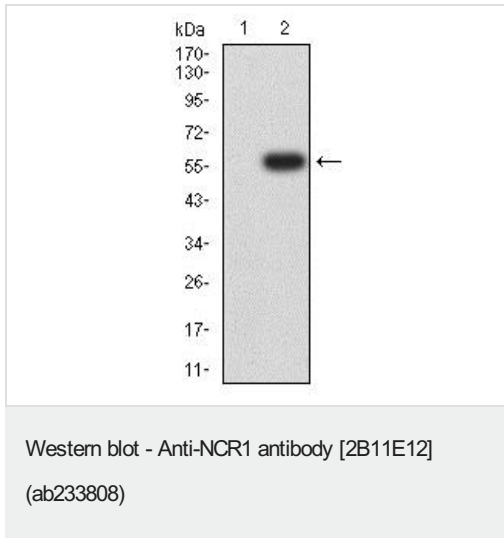
## Target

<b>Function</b>	Cytotoxicity-activating receptor that may contribute to the increased efficiency of activated natural killer (NK) cells to mediate tumor cell lysis.
<b>Tissue specificity</b>	Selectively expressed by both resting and activated NK cells.
<b>Sequence similarities</b>	Belongs to the natural cytotoxicity receptor (NCR) family. Contains 2 Ig-like (immunoglobulin-like) domains.
<b>Post-translational modifications</b>	N-glycosylated. O-glycosylated.
<b>Cellular localization</b>	Cell membrane.

## Images



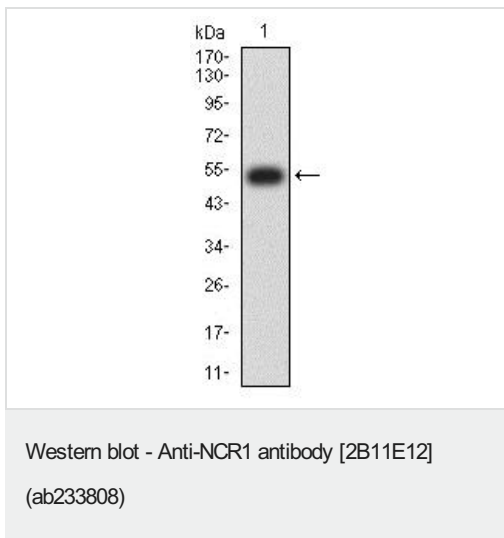
Flow cytometric analysis of HL-60 (human promyelocytic leukemia cell line) cells labeling NCR1 using ab233808 at 1/200 dilution (green) compared with a negative control (red).



**All lanes** : Anti-NCR1 antibody [2B11E12] (ab233808) at 1/500 dilution

**Lane 1** : HEK-293 (human epithelial cell line from embryonic kidney) cell lysate

**Lane 2** : NCR1 (AA: extra 22-258)-hlgGFc transfected HEK-293 cell lysate



Anti-NCR1 antibody [2B11E12] (ab233808) at 1/500 dilution + Recombinant human NCR1 protein

Expected MW is 52.8 kDa.

**Please note:** All products are "FOR RESEARCH USE ONLY. NOT FOR USE IN DIAGNOSTIC PROCEDURES"

### Our Promise to you: Quality guaranteed and expert technical support

- Replacement or refund for products not performing as stated on the datasheet
- Valid for 12 months from date of delivery
- Response to your inquiry within 24 hours
- We provide support in Chinese, English, French, German, Japanese and Spanish
- Extensive multi-media technical resources to help you

- We investigate all quality concerns to ensure our products perform to the highest standards

If the product does not perform as described on this datasheet, we will offer a refund or replacement. For full details of the Abpromise, please visit <https://www.abcam.com/abpromise> or contact our technical team.

### **Terms and conditions**

---

- Guarantee only valid for products bought direct from Abcam or one of our authorized distributors