




Product datasheet

Anti-NCR1 antibody ab214468

★★★★☆ [4 Abreviews](#) [13 References](#) [2 Images](#)

Overview

Product name	Anti-NCR1 antibody
Description	Rabbit polyclonal to NCR1
Host species	Rabbit
Tested applications	Suitable for: WB
Species reactivity	Reacts with: Mouse, Human Predicted to work with: Rat 
Immunogen	Synthetic peptide within Human NCR1 aa 150-250 conjugated to keyhole limpet haemocyanin. The exact immunogen sequence used to generate this antibody is proprietary information. If additional detail on the immunogen is needed to determine the suitability of the antibody for your needs, please contact our Scientific Support team to discuss your requirements. Database link: O76036 <div>  Run BLAST with  Run BLAST with </div>
Positive control	WB: Mouse spleen and lymph node lysate, and human Raji cells.
General notes	<p>The Life Science industry has been in the grips of a reproducibility crisis for a number of years. Abcam is leading the way in addressing this with our range of recombinant monoclonal antibodies and knockout edited cell lines for gold-standard validation. Please check that this product meets your needs before purchasing.</p> <p>If you have any questions, special requirements or concerns, please send us an inquiry and/or contact our Support team ahead of purchase. Recommended alternatives for this product can be found below, along with publications, customer reviews and Q&As</p>

Properties

Form	Liquid
Storage instructions	Shipped at 4°C. Store at +4°C short term (1-2 weeks). Upon delivery aliquot. Store at -20°C long term. Avoid freeze / thaw cycle.
Storage buffer	pH: 7.40 Preservative: 0.02% Proclin 300 Constituents: 50% Glycerol (glycerin, glycerine), 1% BSA, 48.98% TBS, 1X
Purity	Protein A purified
Clonality	Polyclonal

Isotype

IgG

Applications

The Abpromise guarantee

Our **Abpromise guarantee** covers the use of ab214468 in the following tested applications.

The application notes include recommended starting dilutions; optimal dilutions/concentrations should be determined by the end user.

Application	Abreviews	Notes
WB		1/300.

Target

Function

Cytotoxicity-activating receptor that may contribute to the increased efficiency of activated natural killer (NK) cells to mediate tumor cell lysis.

Tissue specificity

Selectively expressed by both resting and activated NK cells.

Sequence similarities

Belongs to the natural cytotoxicity receptor (NCR) family.
Contains 2 Ig-like (immunoglobulin-like) domains.

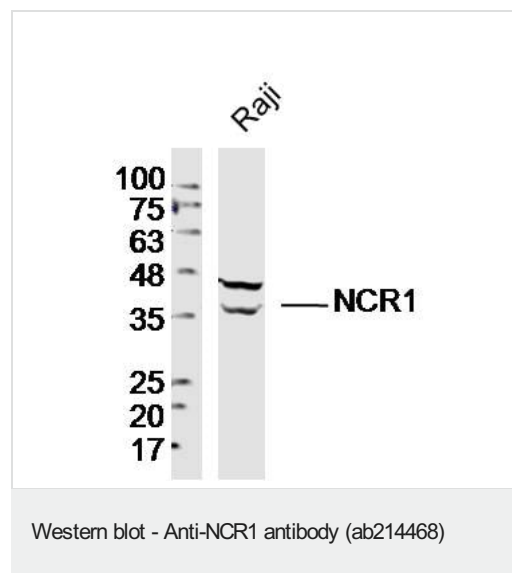
Post-translational modifications

N-glycosylated.
O-glycosylated.

Cellular localization

Cell membrane.

Images

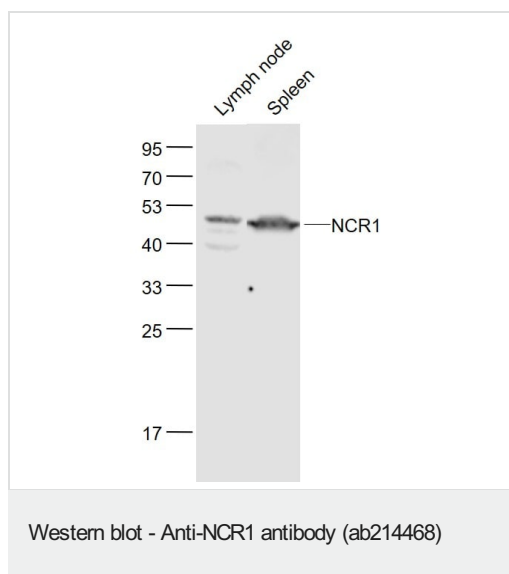


Anti-NCR1 antibody (ab214468) at 1/300 dilution + Raji cell lysates

Secondary

conjugated secondary antibody at 1/20000 dilution

Upper band could be the result of glycosylation



All lanes : Anti-NCR1 antibody (ab214468) at 1/1000 dilution

Lane 1 : Mouse lymph node lysate

Lane 2 : Mouse spleen lysate

Secondary

All lanes : Conjugated secondary antibody at 1/20000 dilution

Please note: All products are "FOR RESEARCH USE ONLY. NOT FOR USE IN DIAGNOSTIC PROCEDURES"

Our Abpromise to you: Quality guaranteed and expert technical support

- Replacement or refund for products not performing as stated on the datasheet
- Valid for 12 months from date of delivery
- Response to your inquiry within 24 hours
- We provide support in Chinese, English, French, German, Japanese and Spanish
- Extensive multi-media technical resources to help you
- We investigate all quality concerns to ensure our products perform to the highest standards

If the product does not perform as described on this datasheet, we will offer a refund or replacement. For full details of the Abpromise, please visit <https://www.abcam.com/abpromise> or contact our technical team.

Terms and conditions

- Guarantee only valid for products bought direct from Abcam or one of our authorized distributors