



Anti-NDP52 antibody [OTI4H5] ab124372

[1 References](#) [7 Images](#)

Overview

Product name	Anti-NDP52 antibody [OTI4H5]
Description	Mouse monoclonal [OTI4H5] to NDP52
Host species	Mouse
Tested applications	Suitable for: Flow Cyt (Intra), WB, ICC/IF
Species reactivity	Reacts with: Human, African green monkey
Immunogen	<p>Recombinant full length protein corresponding to Human NDP52 aa 1-446. Produced in HEK-293T cells (NP_005822).</p> <p>Sequence:</p> <pre> MEETIKDPPTSAVLLDHCHFSQVIFNSVEKFYIPGGDVTCH YTFTQHFIP RRKDWIGIFRVGWKTTREYYTFMWVTLPIDLNNKSAKQQE VQFKAYYLPK DDEYYQFCYDEDGVVRGASIPFQFRPENEEIDLVTQTQ EVEEIEQHNK ELCKENQELKDSCISLQKQNSDMQAELQKKQEELETLSI NKKLELKVKE QKDYWETELLQLKEQNQKMSENEKMGIRVDQLQAQLST QEKEMEKLTVQG DQDKTEQLEQLKKENDHFLSLTEQRKDQKKLEQTVEQM KQNETTAMKKQ QELMDENFDLSKRLSENEIICNALQRQKERLEGENDLLKR ENSRLLSYMG LDFNSLPYQVPTSDEGGARQNPGLAYGNPYSGIQESSSP SPLSIKKCPIC KADDICDHTLEQQQMQLCFNCPICDKIFPATEKQIFEDHV FCHSL </pre> <p>Database link: Q13137</p> <p style="text-align: right;">  Run BLAST with  Run BLAST with </p>
Positive control	WB: HEK-293T cell lysate transfected with pCMV6-ENTRY NDP52 cDNA; HeLa, A549, COS-7, Jurkat and MCF7 cell extracts; Human testis, omentum, uterus, breast, brain, liver, ovary, thyroid gland and colon lysate. ICC/IF: COS-7 cells transiently transfected by NDP52 cDNA. Flow Cyt (Intra): HeLa and Jurkat cells; HEK-293T cells transfected with pCMV6-ENTRY NDP52.
General notes	Clone OTI4H5 (formerly 4H5).

The Life Science industry has been in the grips of a reproducibility crisis for a number of years. Abcam is leading the way in addressing this with our range of recombinant monoclonal antibodies and knockout edited cell lines for gold-standard validation. Please check that this product meets your needs before purchasing.

If you have any questions, special requirements or concerns, please send us an inquiry and/or contact our Support team ahead of purchase. Recommended alternatives for this product can be found below, along with publications, customer reviews and Q&As

Properties

Form	Liquid
Storage instructions	Shipped at 4°C. Store at +4°C short term (1-2 weeks). Upon delivery aliquot. Store at -20°C. Avoid freeze / thaw cycle.
Storage buffer	pH: 7.30 Preservative: 0.02% Sodium azide Constituents: PBS, 50% Glycerol, 1% BSA
Purity	Affinity purified
Purification notes	Purified from cell culture supernatant.
Clonality	Monoclonal
Clone number	OT4H5
Isotype	IgG1

Applications

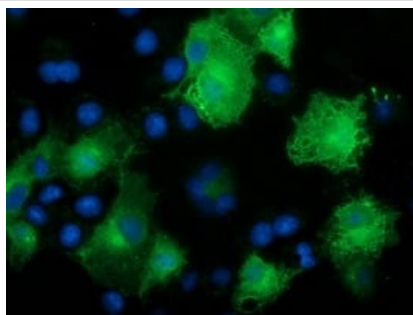
The Abpromise guarantee Our **Abpromise guarantee** covers the use of ab124372 in the following tested applications. The application notes include recommended starting dilutions; optimal dilutions/concentrations should be determined by the end user.

Application	Abreviews	Notes
Flow Cyt (Intra)		1/100.
WB		1/500 - 1/2000. Predicted molecular weight: 52 kDa.
ICC/IF		1/100.

Target

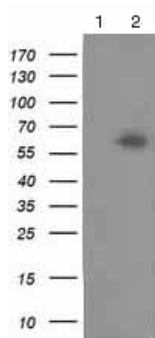
Function	May play a role in ruffle formation and actin cytoskeleton organization. Seems to negatively regulate constitutive secretion.
Tissue specificity	Expressed in all tissues tested with highest expression in skeletal muscle and lowest in brain.
Cellular localization	Cytoplasm > perinuclear region. Golgi apparatus. Cytoplasm > cytoskeleton. According to PubMed:7540613, localizes to nuclear dots. According to PubMed:9230084 and PubMed:12869526, it is not a nuclear dot-associated protein but localizes predominantly in the cytoplasm with a coarse-grained distribution preferentially close to the nucleus.

Images



Immunocytochemistry/ Immunofluorescence - Anti-NDP52 antibody [OTI4H5] (ab124372)

COS-7 (african green monkey kidney fibroblast-like cell line) cells transiently transfected by pCMV6-ENTRY NDP52, labeling NDP52 using ab124372 at dilution 1/100 dilution in ICC/IF.



Western blot - Anti-NDP52 antibody [OTI4H5] (ab124372)

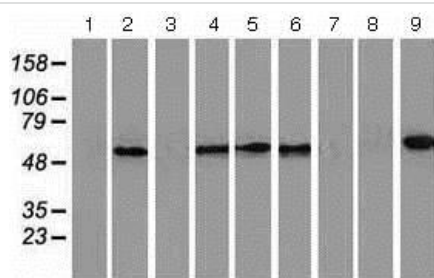
All lanes : Anti-NDP52 antibody [OTI4H5] (ab124372) at 1/500 dilution

Lane 1 : HEK-293T (human epithelial cell line from embryonic kidney transformed with large T antigen) cell lysate transfected with pCMV6-ENTRY control

Lane 2 : HEK-293T cell lysate transfected with pCMV6-ENTRY NDP52 cDNA

Lysates/proteins at 5 µg per lane.

Predicted band size: 52 kDa



Western blot - Anti-NDP52 antibody [OTI4H5] (ab124372)

All lanes : Anti-NDP52 antibody [OTI4H5] (ab124372) at 1/500 dilution

Lane 1 : HepG2 (human liver hepatocellular carcinoma cell line) cell extract

Lane 2 : HeLa (human epithelial cell line from cervix adenocarcinoma) cell extract

Lane 3 : SVT2 cell extract

Lane 4 : A549 (human lung carcinoma cell line) cell extract

Lane 5 : COS-7 (African green monkey kidney fibroblast-like cell line) cell extract

Lane 6 : Jurkat (human T cell leukemia cell line from peripheral blood) cell extract

Lane 7 : MDCK (Canine kidney cell line) cell extract

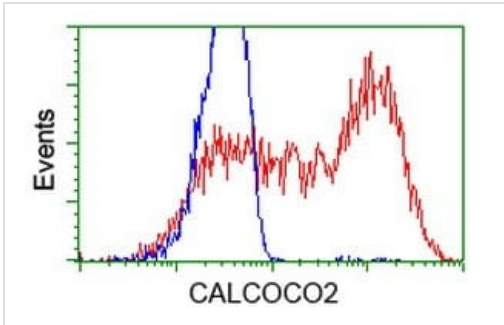
Lane 8 : PC-12 (Rat adrenal gland pheochromocytoma cell line)

cell extract

Lane 9 : MCF7 (Human breast adenocarcinoma cell line) cell extract

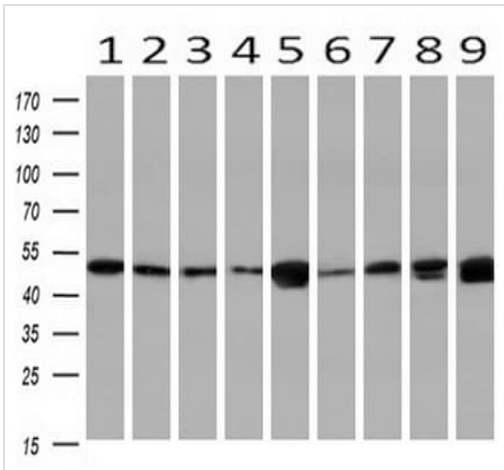
Lysates/proteins at 35 µg per lane.

Predicted band size: 52 kDa



Flow Cytometry (Intracellular) - Anti-NDP52 antibody [OT14H5] (ab124372)

Flow cytometric analysis of HEK-293T (human epithelial cell line from embryonic kidney transformed with large T antigen) cells transfected with either NDP52 overexpress plasmid (Red) or empty vector control plasmid (Blue) labeling NDP52 with ab124372 at 1/100 dilution.



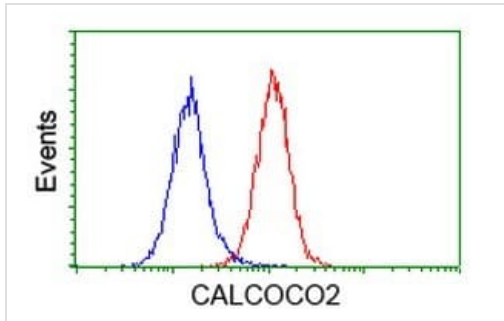
Western blot - Anti-NDP52 antibody [OT14H5] (ab124372)

All lanes : Anti-NDP52 antibody [OT14H5] (ab124372) at 1/500 dilution

- Lane 1** : Human testis extract
- Lane 2** : Human omentum extract
- Lane 3** : Human uterus extract
- Lane 4** : Human breast extract
- Lane 5** : Human brain extract
- Lane 6** : Human liver extract
- Lane 7** : Human ovary extract
- Lane 8** : Human thyroid gland extract
- Lane 9** : Human colon extract

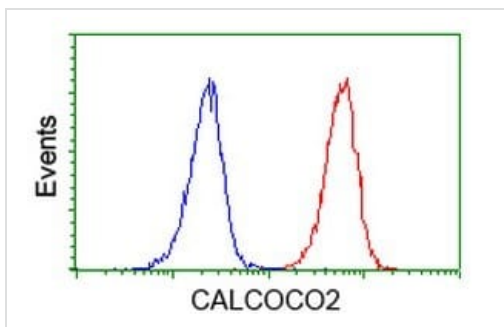
Lysates/proteins at 10 µg per lane.

Predicted band size: 52 kDa



Flow cytometric analysis of HeLa (human epithelial cell line from cervix adenocarcinoma) cells labeling NDP52 using ab124372 at 1/100 dilution (Red), compared to a nonspecific negative control antibody (Blue).

Flow Cytometry (Intracellular) - Anti-NDP52 antibody [OT14H5] (ab124372)



Flow cytometric analysis of Jurkat (human T cell leukemia cell line from peripheral blood) cells labeling NDP52 using ab124372 at a dilution of 1/100 (Red), compared to a nonspecific negative control antibody (Blue).

Flow Cytometry (Intracellular) - Anti-NDP52 antibody [OT14H5] (ab124372)

Please note: All products are "FOR RESEARCH USE ONLY. NOT FOR USE IN DIAGNOSTIC PROCEDURES"

Our Abpromise to you: Quality guaranteed and expert technical support

- Replacement or refund for products not performing as stated on the datasheet
- Valid for 12 months from date of delivery
- Response to your inquiry within 24 hours
- We provide support in Chinese, English, French, German, Japanese and Spanish
- Extensive multi-media technical resources to help you
- We investigate all quality concerns to ensure our products perform to the highest standards

If the product does not perform as described on this datasheet, we will offer a refund or replacement. For full details of the Abpromise, please visit <https://www.abcam.com/abpromise> or contact our technical team.

Terms and conditions

- Guarantee only valid for products bought direct from Abcam or one of our authorized distributors