


Product datasheet

Anti-NDUFS7 antibody ab105025

★★★★☆ [1 Abreviews](#) [2 References](#) [1 Image](#)

Overview

Product name	Anti-NDUFS7 antibody
Description	Goat polyclonal to NDUFS7
Host species	Goat
Tested applications	Suitable for: WB, IHC-P
Species reactivity	Reacts with: Human Predicted to work with: Goat, Cow, Dog, Chimpanzee, Gorilla 
Immunogen	Synthetic peptide: C-SRGEYVVAKLD , corresponding to internal sequence amino acids 58-68 of Human NDUFS7 (NP_077718.3) Run BLAST with Run BLAST with
Positive control	WB: Human Heart lysate; IHC-P: Paraffin embedded Human Brain (Cortex) and Liver.
General notes	<p>The Life Science industry has been in the grips of a reproducibility crisis for a number of years. Abcam is leading the way in addressing this with our range of recombinant monoclonal antibodies and knockout edited cell lines for gold-standard validation. Please check that this product meets your needs before purchasing.</p> <p>If you have any questions, special requirements or concerns, please send us an inquiry and/or contact our Support team ahead of purchase. Recommended alternatives for this product can be found below, along with publications, customer reviews and Q&As</p>

Properties

Form	Liquid
Storage instructions	Shipped at 4°C. Upon delivery aliquot and store at -20°C. Avoid freeze / thaw cycles.
Storage buffer	pH: 7.30 Preservative: 0.02% Sodium azide Constituents: 0.5% BSA, Tris buffered saline
Purity	Immunogen affinity purified
Purification notes	ab105025 was purified from goat serum by ammonium sulphate precipitation followed by antigen affinity chromatography using the immunizing peptide.
Clonality	Polyclonal

Isotype IgG

Applications

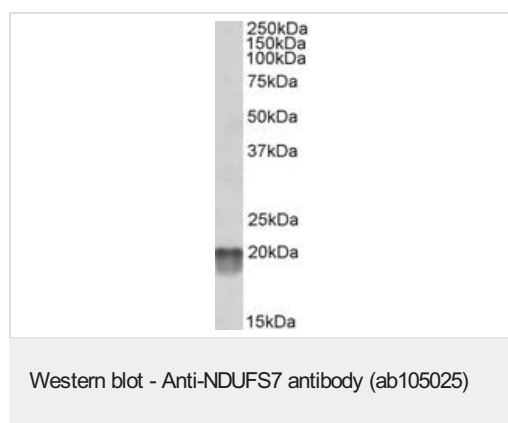
The Abpromise guarantee Our **Abpromise guarantee** covers the use of ab105025 in the following tested applications. The application notes include recommended starting dilutions; optimal dilutions/concentrations should be determined by the end user.

Application	Abreviews	Notes
WB	★★★★★ (1)	Use a concentration of 1 - 3 µg/ml. Detects a band of approximately 20 kDa (predicted molecular weight: 24 kDa). 1 hour primary incubation is recommended for this product.
IHC-P		Use a concentration of 5 µg/ml.

Target

Function	Core subunit of the mitochondrial membrane respiratory chain NADH dehydrogenase (Complex I) that is believed to belong to the minimal assembly required for catalysis. Complex I functions in the transfer of electrons from NADH to the respiratory chain. The immediate electron acceptor for the enzyme is believed to be ubiquinone.
Involvement in disease	Leigh syndrome Mitochondrial complex I deficiency
Sequence similarities	Belongs to the complex I 20 kDa subunit family.
Cellular localization	Mitochondrion.

Images



Anti-NDUFS7 antibody (ab105025) at 0.1 µg/ml + Human Heart lysate (in RIPA buffer) at 35 µg

Developed using the ECL technique.

Predicted band size: 24 kDa

Primary incubation was 1 hour.

Please note: All products are "FOR RESEARCH USE ONLY. NOT FOR USE IN DIAGNOSTIC PROCEDURES"

Our Abpromise to you: Quality guaranteed and expert technical support

- Replacement or refund for products not performing as stated on the datasheet
- Valid for 12 months from date of delivery
- Response to your inquiry within 24 hours

- We provide support in Chinese, English, French, German, Japanese and Spanish
- Extensive multi-media technical resources to help you
- We investigate all quality concerns to ensure our products perform to the highest standards

If the product does not perform as described on this datasheet, we will offer a refund or replacement. For full details of the Abpromise, please visit <https://www.abcam.com/abpromise> or contact our technical team.

Terms and conditions

- Guarantee only valid for products bought direct from Abcam or one of our authorized distributors