

## Product datasheet

# Anti-Neuritin antibody ab64186

★★★★☆ [1 Abreviews](#) [4 References](#) [2 Images](#)

### Overview

---

<b>Product name</b>	Anti-Neuritin antibody
<b>Description</b>	Rabbit polyclonal to Neuritin
<b>Host species</b>	Rabbit
<b>Tested applications</b>	<b>Suitable for:</b> WB, IHC-P
<b>Species reactivity</b>	<b>Reacts with:</b> Human
<b>Immunogen</b>	Synthetic peptide corresponding to Human Neuritin (internal sequence). 20 amino acid peptide from near the center of human Neuritin.
<b>Positive control</b>	Human brain cortex tissue.
<b>General notes</b>	<p>The Life Science industry has been in the grips of a reproducibility crisis for a number of years. Abcam is leading the way in addressing this with our range of recombinant monoclonal antibodies and knockout edited cell lines for gold-standard validation. Please check that this product meets your needs before purchasing.</p> <p>If you have any questions, special requirements or concerns, please send us an inquiry and/or contact our Support team ahead of purchase. Recommended alternatives for this product can be found below, along with publications, customer reviews and Q&amp;As</p>

### Properties

---

<b>Form</b>	Liquid
<b>Storage instructions</b>	Shipped at 4°C. Store at +4°C short term (1-2 weeks). Store at -20°C or -80°C. Avoid freeze / thaw cycle.
<b>Storage buffer</b>	pH: 7.4 Preservative: 0.02% Sodium azide Constituent: PBS
<b>Purity</b>	Immunogen affinity purified
<b>Clonality</b>	Polyclonal
<b>Isotype</b>	IgG

### Applications

---

## The Abpromise guarantee

Our **Abpromise guarantee** covers the use of ab64186 in the following tested applications.

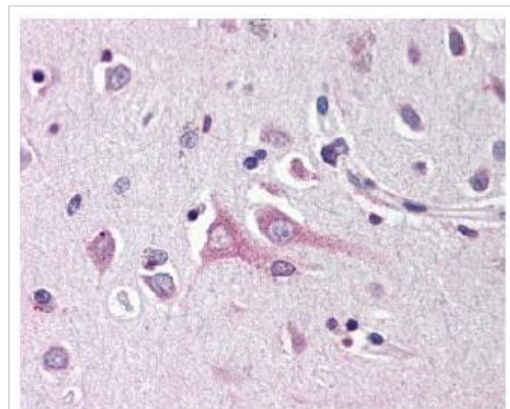
The application notes include recommended starting dilutions; optimal dilutions/concentrations should be determined by the end user.

Application	Abreviews	Notes
WB	★★★★★ (1)	Use at an assay dependent concentration. Predicted molecular weight: 15 kDa.
IHC-P		Use a concentration of 10 µg/ml.

## Target

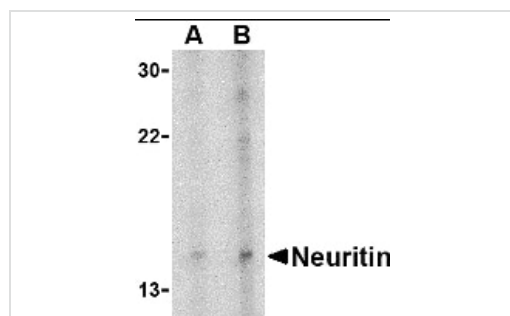
<b>Function</b>	Promotes neurite outgrowth and especially branching of neuritic processes in primary hippocampal and cortical cells.
<b>Sequence similarities</b>	Belongs to the neuritin family.
<b>Cellular localization</b>	Cell membrane. Cell junction > synapse.

## Images



Immunohistochemistry (Formalin/PFA-fixed paraffin-embedded sections) - Anti-Neuritin antibody (ab64186)

ab64186 (10ug/ml) staining Neuritin in human brain, cortex tissue by immunohistochemistry using formalin-fixed, paraffin-embedded tissue.



Western blot - Anti-Neuritin antibody (ab64186)

Western blot analysis of neuritin in Daudi cell lysate using ab64186 at (A) 5 and (B) 10 µg/ml.

**Please note:** All products are "FOR RESEARCH USE ONLY. NOT FOR USE IN DIAGNOSTIC PROCEDURES"

### **Our Abpromise to you: Quality guaranteed and expert technical support**

---

- Replacement or refund for products not performing as stated on the datasheet
- Valid for 12 months from date of delivery
- Response to your inquiry within 24 hours
  
- We provide support in Chinese, English, French, German, Japanese and Spanish
- Extensive multi-media technical resources to help you
- We investigate all quality concerns to ensure our products perform to the highest standards

If the product does not perform as described on this datasheet, we will offer a refund or replacement. For full details of the Abpromise, please visit <https://www.abcam.com/abpromise> or contact our technical team.

### **Terms and conditions**

---

- Guarantee only valid for products bought direct from Abcam or one of our authorized distributors