

Product datasheet

Anti-Neuropeptide Y antibody [8] ab112473

★★★★★ [1 Abreviews](#) [10 References](#) [5 Images](#)

Overview

Product name	Anti-Neuropeptide Y antibody [8]
Description	Mouse monoclonal [8] to Neuropeptide Y
Host species	Mouse
Specificity	Cross-reactivity with Neuropeptide Y(1-24), Neuropeptide Y (18-36), Peptide YY or Pancreatic Polypeptide was <0.2%.
Tested applications	Suitable for: IHC-P
Species reactivity	Reacts with: Mouse, Human
Immunogen	Synthetic peptide corresponding to a region within Human/Rat Neuropeptide Y adsorbed onto aluminum hydroxide gel.
Epitope	The epitope of ab112473 is probably around the mid-molecular region of Neuropeptide Y.
Positive control	Mouse brain tissue (fibres in the hilus of the hippocampus, following epileptic attack) Mouse brain tissue (interneurons in the cortex)
General notes	<p>The Life Science industry has been in the grips of a reproducibility crisis for a number of years. Abcam is leading the way in addressing this with our range of recombinant monoclonal antibodies and knockout edited cell lines for gold-standard validation. Please check that this product meets your needs before purchasing.</p> <p>If you have any questions, special requirements or concerns, please send us an inquiry and/or contact our Support team ahead of purchase. Recommended alternatives for this product can be found below, along with publications, customer reviews and Q&As</p>

Properties

Form	Liquid
Storage instructions	Shipped at 4°C. Store at +4°C short term (1-2 weeks). Store at -20°C or -80°C. Avoid freeze / thaw cycle.
Storage buffer	<p>pH: 7.40</p> <p>Preservative: 0.1% Sodium azide</p> <p>Constituents: 2.9% Sodium chloride, 97% PBS</p>
Purity	Protein G purified
Clonality	Monoclonal

Clone number	8
Isotype	IgG1
Light chain type	kappa

Applications

The Abpromise guarantee Our **Abpromise guarantee** covers the use of ab112473 in the following tested applications. The application notes include recommended starting dilutions; optimal dilutions/concentrations should be determined by the end user.

Application	Abreviews	Notes
IHC-P	★★★★★ (1)	1/1000.

Target

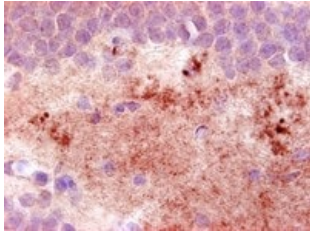
Function	NPY is implicated in the control of feeding and in secretion of gonadotrophin-release hormone.
Tissue specificity	One of the most abundant peptides in the nervous system. Also found in some chromaffin cells of the adrenal medulla.
Sequence similarities	Belongs to the NPY family.
Cellular localization	Secreted.

Images



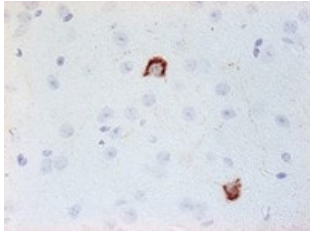
ab112473, at 1/1000, staining Neuropeptide Y in paraffin embedded Mouse brain tissue (fibres in the hilus of the hippocampus) from a mouse suffering an epileptic attack just before perfusion by Immunohistochemistry.

Immunohistochemistry (Formalin/PFA-fixed paraffin-embedded sections) - Anti-Neuropeptide Y antibody [8] (ab112473)



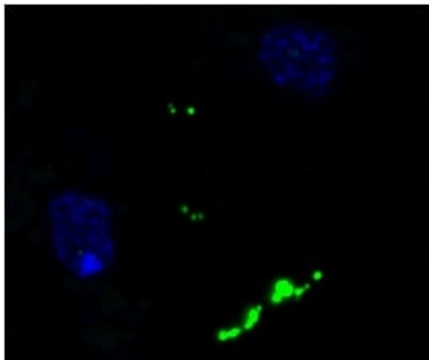
Immunohistochemistry (Formalin/PFA-fixed paraffin-embedded sections) - Anti-Neuropeptide Y antibody [8] (ab112473)

ab112473, at 1/1000, staining Neuropeptide Y in paraffin embedded Mouse brain tissue (fibres in the hilus of the hippocampus) from a mouse suffering an epileptic attack just before perfusion by Immunohistochemistry.



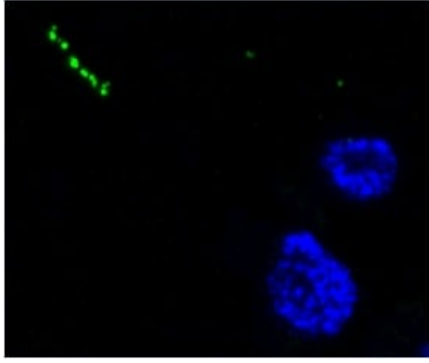
Immunohistochemistry (Formalin/PFA-fixed paraffin-embedded sections) - Anti-Neuropeptide Y antibody [8] (ab112473)

ab112473, at 1/1000, staining Neuropeptide Y in paraffin embedded Mouse brain tissue (interneurons in the cortex) by Immunohistochemistry.



Immunohistochemistry (Formalin/PFA-fixed paraffin-embedded sections) - Anti-Neuropeptide Y antibody [8] (ab112473)

Immunofluorescence images of tissue from human cerebral cortex, applying ab112473 to ultra thin sections (antibody: green, DAPI-stained nuclei: blue). The antibody labels NPY-positive processes in the neutrophil.



Immunofluorescence images of tissue from human cerebral cortex, applying ab112473 to ultra thin sections (antibody: green, DAPI-stained nuclei: blue). The antibody labels NPY-positive processes in the neutrophil.

Immunohistochemistry (Formalin/PFA-fixed paraffin-embedded sections) - Anti-Neuropeptide Y antibody [8] (ab112473)

Please note: All products are "FOR RESEARCH USE ONLY. NOT FOR USE IN DIAGNOSTIC PROCEDURES"

Our Abpromise to you: Quality guaranteed and expert technical support

- Replacement or refund for products not performing as stated on the datasheet
- Valid for 12 months from date of delivery
- Response to your inquiry within 24 hours
- We provide support in Chinese, English, French, German, Japanese and Spanish
- Extensive multi-media technical resources to help you
- We investigate all quality concerns to ensure our products perform to the highest standards

If the product does not perform as described on this datasheet, we will offer a refund or replacement. For full details of the Abpromise, please visit <https://www.abcam.com/abpromise> or contact our technical team.

Terms and conditions

- Guarantee only valid for products bought direct from Abcam or one of our authorized distributors