

Product datasheet

Anti-NFE2L1 antibody ab238154

3 Images

Overview

Product name	Anti-NFE2L1 antibody
Description	Rabbit polyclonal to NFE2L1
Host species	Rabbit
Tested applications	Suitable for: ICC, IHC-P
Species reactivity	Reacts with: Human
Immunogen	Recombinant fragment corresponding to Human NFE2L1 aa 251-550. Database link: Q14494
Positive control	IHC-P: Human tonsil and renal tissue. ICC: HepG2 cells.
General notes	<p>The Life Science industry has been in the grips of a reproducibility crisis for a number of years. Abcam is leading the way in addressing this with our range of recombinant monoclonal antibodies and knockout edited cell lines for gold-standard validation. Please check that this product meets your needs before purchasing.</p> <p>If you have any questions, special requirements or concerns, please send us an inquiry and/or contact our Support team ahead of purchase. Recommended alternatives for this product can be found below, along with publications, customer reviews and Q&As</p>

Properties

Form	Liquid
Storage instructions	Shipped at 4°C. Store at +4°C short term (1-2 weeks). Upon delivery aliquot. Store at -20°C long term. Avoid freeze / thaw cycle.
Storage buffer	pH: 7.40 Preservative: 0.03% Proclin 300 Constituents: 50% Glycerol (glycerin, glycerine), PBS
Purity	Protein G purified
Purification notes	Purity >95%
Clonality	Polyclonal
Isotype	IgG

Applications

The Abpromise guarantee

Our **Abpromise guarantee** covers the use of ab238154 in the following tested applications.

The application notes include recommended starting dilutions; optimal dilutions/concentrations should be determined by the end user.

Application	Abreviews	Notes
ICC		1/50 - 1/200.
IHC-P		1/20 - 1/200.

Target

Function

Activates erythroid-specific, globin gene expression.

Sequence similarities

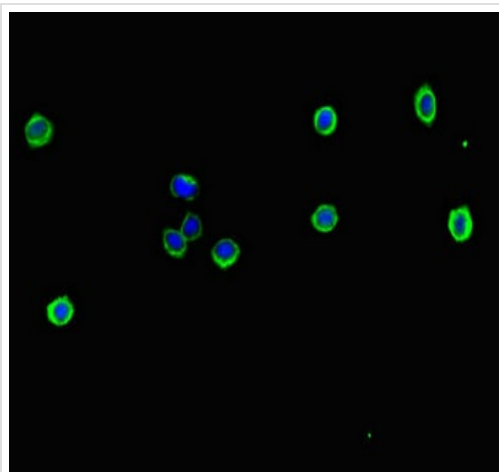
Belongs to the bZIP family. CNC subfamily.

Contains 1 bZIP domain.

Cellular localization

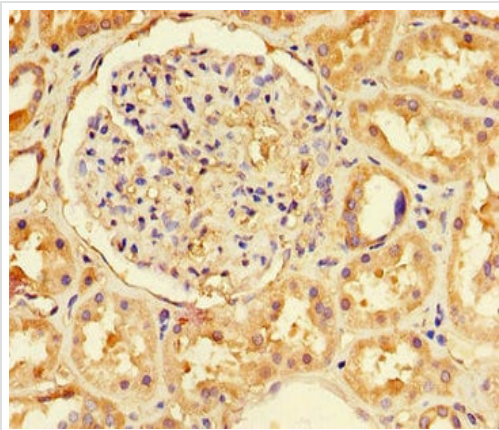
Nucleus.

Images



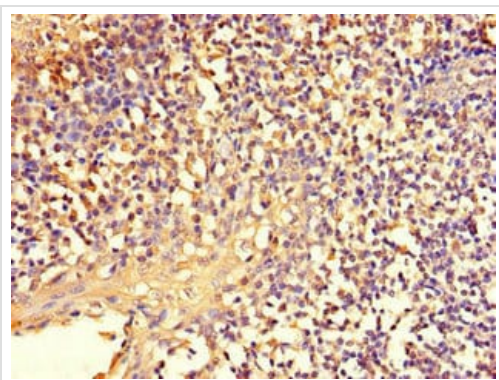
HepG2 (Human liver hepatocellular carcinoma cell line) cells stained for NFE2L1 using ab238154 at a dilution of 1/100 in ICC/IF. Secondary used is an Alexa-Fluor[®]488-conjugated Goat Anti-Rabbit IgG (H+L).

Immunocytochemistry - Anti-NFE2L1 antibody
(ab238154)



Immunohistochemistry (Formalin/PFA-fixed paraffin-embedded sections) - Anti-NFE2L1 antibody (ab238154)

Paraffin-embedded human renal tissue stained for NFE2L1 with ab238154 at a 1/100 dilution in immunohistochemical analysis.



Immunohistochemistry (Formalin/PFA-fixed paraffin-embedded sections) - Anti-NFE2L1 antibody (ab238154)

Paraffin-embedded human tonsil tissue stained for NFE2L1 with ab238154 at a 1/100 dilution in immunohistochemical analysis.

Please note: All products are "FOR RESEARCH USE ONLY. NOT FOR USE IN DIAGNOSTIC PROCEDURES"

Our Abpromise to you: Quality guaranteed and expert technical support

- Replacement or refund for products not performing as stated on the datasheet
- Valid for 12 months from date of delivery
- Response to your inquiry within 24 hours

- We provide support in Chinese, English, French, German, Japanese and Spanish
- Extensive multi-media technical resources to help you
- We investigate all quality concerns to ensure our products perform to the highest standards

If the product does not perform as described on this datasheet, we will offer a refund or replacement. For full details of the Abpromise, please visit <https://www.abcam.com/abpromise> or contact our technical team.

Terms and conditions

-
- Guarantee only valid for products bought direct from Abcam or one of our authorized distributors