


Anti-NFIC/CTF antibody ab245597

[2 References](#) [4 Images](#)

Overview

Product name	Anti-NFIC/CTF antibody
Description	Rabbit polyclonal to NFIC/CTF
Host species	Rabbit
Tested applications	Suitable for: IP, IHC-P, WB
Species reactivity	Reacts with: Mouse, Human Predicted to work with: Pig 
Immunogen	Synthetic peptide within Human NFIC/CTF aa 200-250. The exact sequence is proprietary. EAW69324.1 Database link: P08651
Positive control	IHC-P: Human breast carcinoma and mouse renal cell carcinoma tissue. WB: HeLa whole cell lysate. IP: HeLa whole cell lysate.
General notes	<p>The Life Science industry has been in the grips of a reproducibility crisis for a number of years. Abcam is leading the way in addressing this with our range of recombinant monoclonal antibodies and knockout edited cell lines for gold-standard validation. Please check that this product meets your needs before purchasing.</p> <p>If you have any questions, special requirements or concerns, please send us an inquiry and/or contact our Support team ahead of purchase. Recommended alternatives for this product can be found below, along with publications, customer reviews and Q&As</p>

Properties

Form	Liquid
Storage instructions	Shipped at 4°C. Store at +4°C short term (1-2 weeks). Upon delivery aliquot. Store at -20°C long term. Avoid freeze / thaw cycle.
Storage buffer	pH: 6.8 Preservative: 0.09% Sodium azide Constituents: Tris buffered saline, 0.1% BSA
Purity	Immunogen affinity purified
Purification notes	ab245597 was affinity purified using an epitope specific to NFIC/CTF immobilized on solid support.
Clonality	Polyclonal

Isotype

IgG

Applications

The Abpromise guarantee

Our **Abpromise guarantee** covers the use of ab245597 in the following tested applications.

The application notes include recommended starting dilutions; optimal dilutions/concentrations should be determined by the end user.

Application	Abreviews	Notes
IP		Use at 2-10 µg/mg of lysate.
IHC-P		1/200 - 1/1000. Perform heat mediated antigen retrieval with citrate buffer pH 6 before commencing with IHC staining protocol.
WB		1/2000 - 1/10000. Predicted molecular weight: 56 kDa.

Target

Function

Recognizes and binds the palindromic sequence 5'-TTGGCNNNNNGCCAA-3' present in viral and cellular promoters and in the origin of replication of adenovirus type 2. These proteins are individually capable of activating transcription and replication.

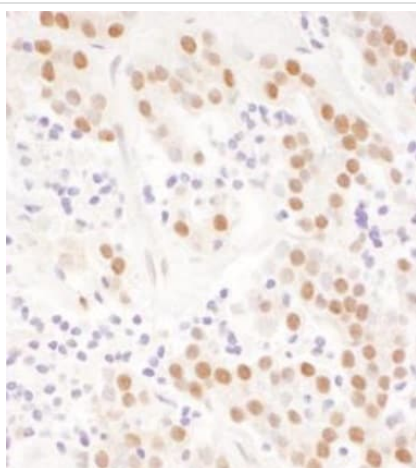
Sequence similarities

Belongs to the CTF/NF-I family.
Contains 1 CTF/NF-I DNA-binding domain.

Cellular localization

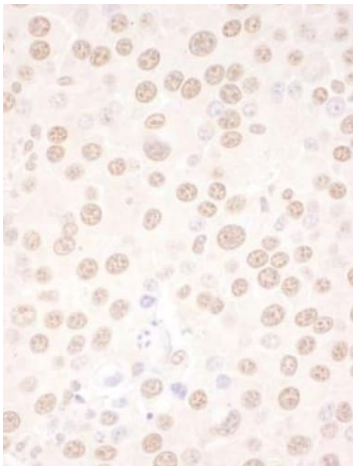
Nucleus.

Images



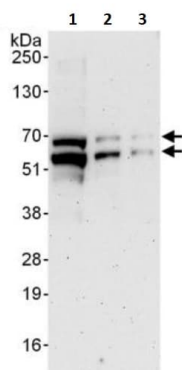
Formalin-fixed, paraffin-embedded human breast carcinoma tissue stained for NFIC/CTF with ab245597 at a 1/200 dilution in immunohistochemical analysis. DAB staining. Counterstained using hematoxylin (blue).

Immunohistochemistry (Formalin/PFA-fixed paraffin-embedded sections) - Anti-NFIC/CTF antibody (ab245597)



Formalin-fixed, paraffin-embedded mouse renal cell carcinoma tissue stained for NFIC/CTF with ab245597 at a 1/200 dilution in immunohistochemical analysis. DAB staining.

Immunohistochemistry (Formalin/PFA-fixed paraffin-embedded sections) - Anti-NFIC/CTF antibody (ab245597)



All lanes : Anti-NFIC/CTF antibody (ab245597) at 0.04 µg/ml

Lane 1 : HeLa (Human epithelial cell line from cervix adenocarcinoma) whole cell lysate at 50 µg

Lane 2 : HeLa whole cell lysate at 15 µg

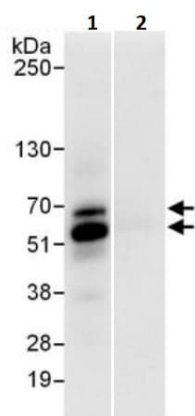
Lane 3 : HeLa whole cell lysate at 5 µg

Developed using the ECL technique.

Predicted band size: 56 kDa

Exposure time: 3 minutes

Western blot - Anti-NFIC/CTF antibody (ab245597)



Immunoprecipitation - Anti-NFIC/CTF antibody
(ab245597)

NFIC/CTF was immunoprecipitated from HeLa (Human epithelial cell line from cervix adenocarcinoma) whole cell lysate (1 mg per IP reaction; 20% of IP loaded).

ab245597 used for IP at 6 µg/mg lysate. For WB 1 µg/ml.

Lane 1: ab245597 IP in HeLa whole cell lysate.

Lane 2: Control IgG in HeLa whole cell lysate.

Chemiluminescence detection: 3 seconds.

Please note: All products are "FOR RESEARCH USE ONLY. NOT FOR USE IN DIAGNOSTIC PROCEDURES"

Our Abpromise to you: Quality guaranteed and expert technical support

- Replacement or refund for products not performing as stated on the datasheet
- Valid for 12 months from date of delivery
- Response to your inquiry within 24 hours
- We provide support in Chinese, English, French, German, Japanese and Spanish
- Extensive multi-media technical resources to help you
- We investigate all quality concerns to ensure our products perform to the highest standards

If the product does not perform as described on this datasheet, we will offer a refund or replacement. For full details of the Abpromise, please visit <https://www.abcam.com/abpromise> or contact our technical team.

Terms and conditions

- Guarantee only valid for products bought direct from Abcam or one of our authorized distributors