

Anti-NFX1 antibody ab176733

[1 References](#) [2 Images](#)

Overview

Product name	Anti-NFX1 antibody
Description	Rabbit polyclonal to NFX1
Host species	Rabbit
Tested applications	Suitable for: IP, WB
Species reactivity	Reacts with: Mouse, Human
Immunogen	Synthetic peptide within Human NFX1 aa 1070-1120. The exact sequence is proprietary. NP_002495.2. Database link: Q12986
Positive control	HeLa, 293T and NIH3T3 whole cell lysates
General notes	<p>The Life Science industry has been in the grips of a reproducibility crisis for a number of years. Abcam is leading the way in addressing this with our range of recombinant monoclonal antibodies and knockout edited cell lines for gold-standard validation. Please check that this product meets your needs before purchasing.</p> <p>If you have any questions, special requirements or concerns, please send us an inquiry and/or contact our Support team ahead of purchase. Recommended alternatives for this product can be found below, along with publications, customer reviews and Q&As</p>

Properties

Form	Liquid
Storage instructions	Shipped at 4°C. Store at +4°C short term (1-2 weeks). Upon delivery aliquot. Store at -20°C long term. Avoid freeze / thaw cycle.
Storage buffer	pH: 6.8 Preservative: 0.09% Sodium azide Constituents: 0.1% BSA, 99% Tris buffered saline
Purity	Immunogen affinity purified
Clonality	Polyclonal
Isotype	IgG

Applications

The Abpromise guarantee

Our **Abpromise guarantee** covers the use of ab176733 in the following tested applications.

The application notes include recommended starting dilutions; optimal dilutions/concentrations should be determined by the end user.

Application	Abreviews	Notes
IP		Use at 2-5 µg/mg of lysate.
WB		1/2000 - 1/10000. Predicted molecular weight: 124 kDa.

Target

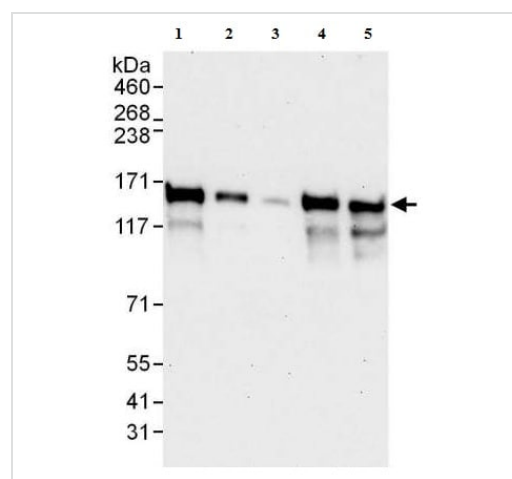
Relevance

NFX1 is a transcriptional repressor capable of binding to the conserved X box motif of HLA-DRA and other MHC class II genes in vitro. It may play a role in the inflammatory response, regulating its duration by limiting the period in which class II MHC molecules are induced by IFN gamma. The RING type zinc finger domain interacts with an ubiquitin conjugating enzyme (E2) and facilitates ubiquitination.

Cellular localization

Nuclear

Images



Western blot - Anti-NFX1 antibody (ab176733)

All lanes : Anti-NFX1 antibody (ab176733) at 0.04 µg/ml

Lane 1 : HeLa whole cell lysate at 50 µg

Lane 2 : HeLa whole cell lysate at 15 µg

Lane 3 : HeLa whole cell lysate at 5 µg

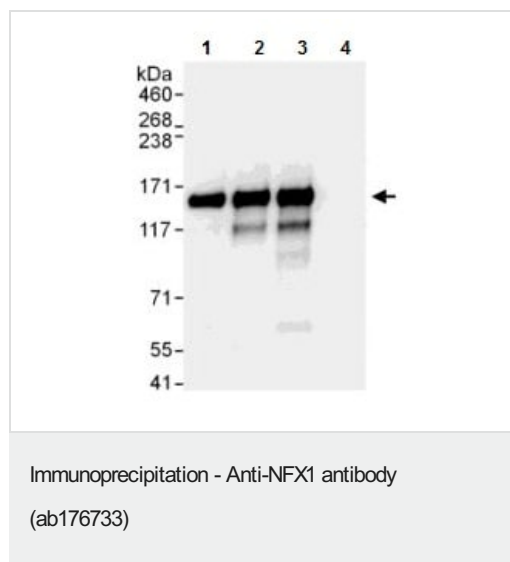
Lane 4 : 293T whole cell lysate at 50 µg

Lane 5 : NIH3T3 whole cell lysate at 50 µg

Developed using the ECL technique.

Predicted band size: 124 kDa

Exposure time: 30 seconds



ab176733 at 0.4 µg/ml detecting NFX1 in HeLa whole cell lysate by WB following IP.

Lane 1: IP with an antibody which recognizes an upstream epitope of NFX1.

Lane 2: IP with an antibody which recognizes an upstream epitope of NFX1.

Lane 3: ab176733 at 3 µg/mg of lysate

Lane 4: Control IgG.

In each case, 1 mg of lysate was used for IP and 20% of the IP was loaded.

Detection: Chemiluminescence with an exposure time of 10 seconds.

Please note: All products are "FOR RESEARCH USE ONLY. NOT FOR USE IN DIAGNOSTIC PROCEDURES"

Our Abpromise to you: Quality guaranteed and expert technical support

- Replacement or refund for products not performing as stated on the datasheet
- Valid for 12 months from date of delivery
- Response to your inquiry within 24 hours
- We provide support in Chinese, English, French, German, Japanese and Spanish
- Extensive multi-media technical resources to help you
- We investigate all quality concerns to ensure our products perform to the highest standards

If the product does not perform as described on this datasheet, we will offer a refund or replacement. For full details of the Abpromise, please visit <https://www.abcam.com/abpromise> or contact our technical team.

Terms and conditions

- Guarantee only valid for products bought direct from Abcam or one of our authorized distributors