


Product datasheet

Anti-NFXL1 antibody ab114848

★★★★☆ [2 Abreviews](#) [1 Image](#)

Overview

Product name	Anti-NFXL1 antibody
Description	Rabbit polyclonal to NFXL1
Host species	Rabbit
Tested applications	Suitable for: IP
Species reactivity	Reacts with: Human Predicted to work with: Guinea pig, Chimpanzee, Rhesus monkey, Gorilla, Orangutan, Elephant 
Immunogen	Synthetic peptide, corresponding to a region within amino acids 100-150 of Human NFXL1 (NP_694540.3)
Positive control	HeLa cell lysate
General notes	<p>Antibody concentration was determined by extinction coefficient: absorbance at 280 nm of 1.4 equals 1.0 mg of IgG.</p> <p>The Life Science industry has been in the grips of a reproducibility crisis for a number of years. Abcam is leading the way in addressing this with our range of recombinant monoclonal antibodies and knockout edited cell lines for gold-standard validation. Please check that this product meets your needs before purchasing.</p> <p>If you have any questions, special requirements or concerns, please send us an inquiry and/or contact our Support team ahead of purchase. Recommended alternatives for this product can be found below, along with publications, customer reviews and Q&As</p>

Properties

Form	Liquid
Storage instructions	Shipped at 4°C. Upon delivery aliquot and store at -20°C. Avoid freeze / thaw cycles.
Storage buffer	<p>pH: 7</p> <p>Preservative: 0.09% Sodium azide</p> <p>Constituent: 99.91% Tris citrate/phosphate</p> <p>pH: 7-8</p>
Purity	Immunogen affinity purified
Purification notes	ab114848 was affinity purified using an epitope specific to NFXL1 immobilized on a solid

	support.
Clonality	Polyclonal
Isotype	IgG

Applications

The Abpromise guarantee Our **Abpromise guarantee** covers the use of ab114848 in the following tested applications. The application notes include recommended starting dilutions; optimal dilutions/concentrations should be determined by the end user.

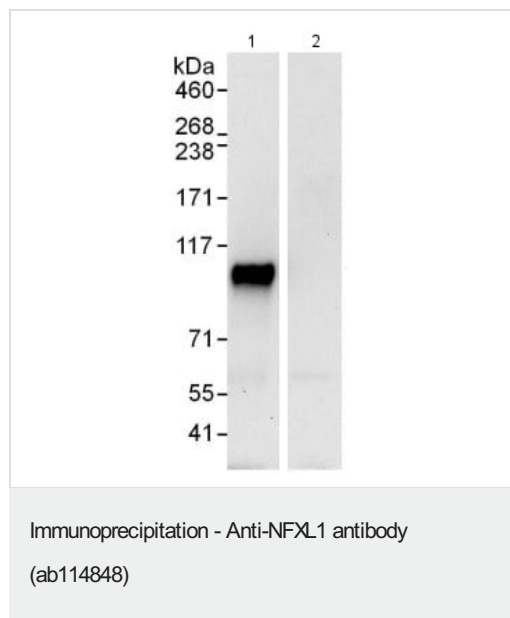
Application	Abreviews	Notes
IP		Use at 2-10 µg/mg of lysate.

Target

Sequence similarities Belongs to the NFX1 family.
Contains 10 NF-X1-type zinc fingers.
Contains 1 RING-type zinc finger.

Cellular localization Membrane.

Images



ab114848 at 6µg/mg of lysate detecting NFXL1 by immunoprecipitation (lane 1). 1mg of HeLa whole cell lysate was used, 20% of immunoprecipitate was loaded. Lane 2: IgG control. Detection: chemiluminescence. Exposure time: 30 seconds.

Please note: All products are "FOR RESEARCH USE ONLY. NOT FOR USE IN DIAGNOSTIC PROCEDURES"

Our Abpromise to you: Quality guaranteed and expert technical support

- Replacement or refund for products not performing as stated on the datasheet
- Valid for 12 months from date of delivery

- Response to your inquiry within 24 hours
- We provide support in Chinese, English, French, German, Japanese and Spanish
- Extensive multi-media technical resources to help you
- We investigate all quality concerns to ensure our products perform to the highest standards

If the product does not perform as described on this datasheet, we will offer a refund or replacement. For full details of the Abpromise, please visit <https://www.abcam.com/abpromise> or contact our technical team.

Terms and conditions

- Guarantee only valid for products bought direct from Abcam or one of our authorized distributors